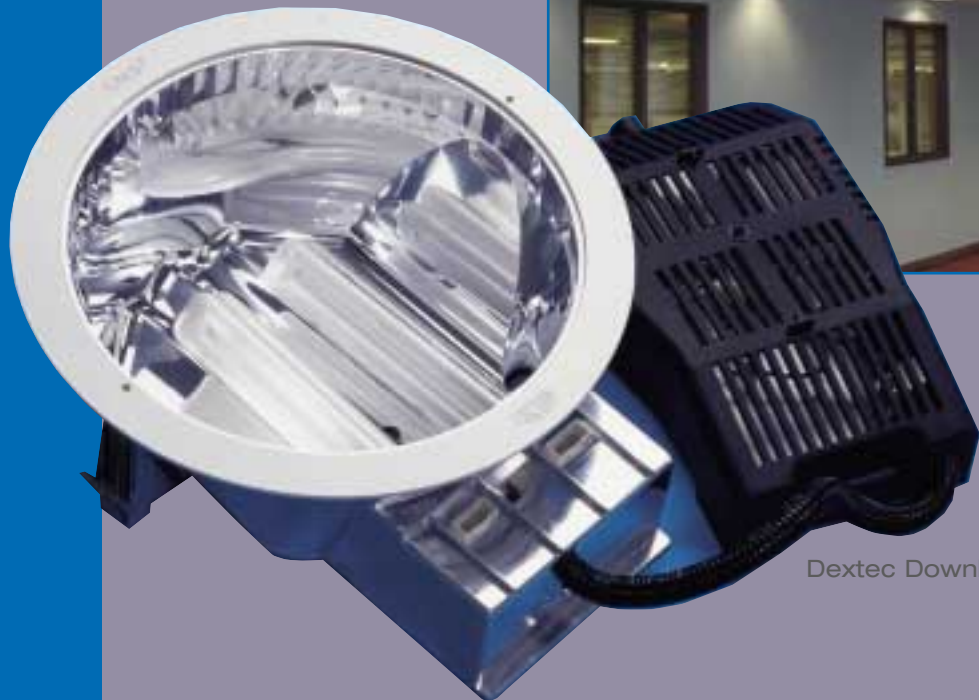


Dextec

Downlighter



Dextec Downlighter

- Lightweight metalized reflectors, easy to install using adjustable screw supports.
- Achieves excellent DLOR from a range of lamp combinations.
- An extensive range of accessories suit a wide variety of applications.
- Ideal for low ceiling voids.
- Control gear options include switch start, high frequency, Analogue dimming, digital dimming and emergency versions.

CE IP20

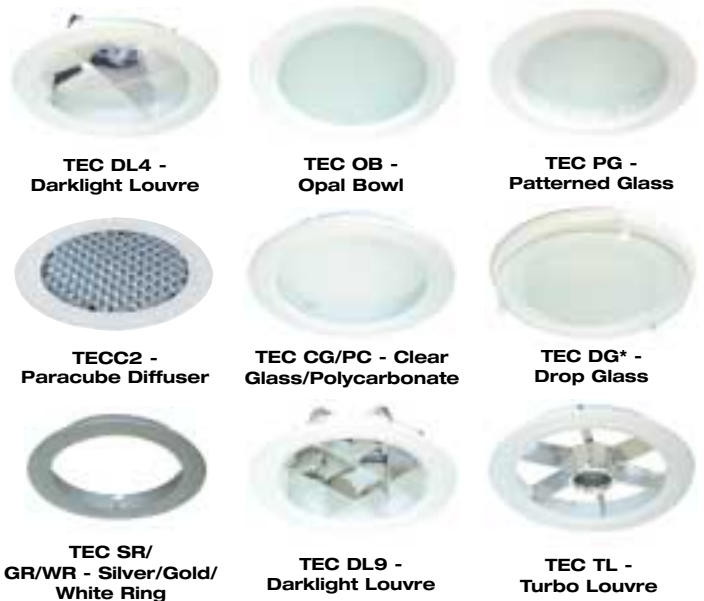


25
Years

Dextra

Dextec

Downlighter



A versatile compact fluorescent downlighter which achieves excellent DLOR results from a range of lamp combinations.

Ideal for use in shops, retail premises, receptions, ancillary areas, corridors, dining halls and restaurants.

A modern easy to install lighting system giving immediate energy savings without the need for total refurbishment.

Injection moulded, bright polished metalized reflector with excellent photometric performance and distribution.

Removable black polycarbonate gearbox ideal for low void depths.

Lightweight and easy to install with two fully adjustable screw tight supports.

Suitable for ceiling thickness's of up to 35 mm. Hole cut out size 230 mm.

Control gear options include switch start, high frequency, digital dimming and emergency.

A wide range of compact fluorescent lamp sources are available from 13w to 42w with 2 pin for Switch Start and 4 pin for all other options. TC-TE lamps should be selected with care to ensure compatibility.

Generous dimensions and air-flow holes ensure correct heat dissipation, efficient performance and longer lamp life.

Heat resistant polycarbonate body complying with the 850° glow wire test.

An attractive range of fully interchangeable halo ring diffuser, louvre and reflector accessories are available.

Constructed to a high specification under CE legislation and current regulations.

Full technical data sheet and photometrics are available on request.

A free, comprehensive design facility can be accessed through our Lighting Services Department, including LG3 2001 guidance.

Order Details

Luminaire Details

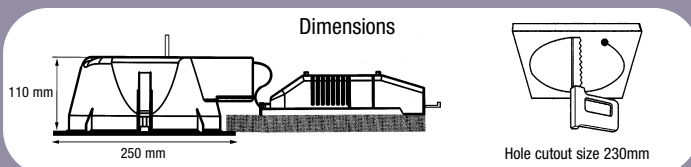
| Order Code | Description | Lamps | | Kg |
|------------|---------------------|---------|---------|------|
| TEC113 | Switch Start | 1 x 13w | TC - D | 1.20 |
| TEC118 | Switch Start | 1 x 18w | TC - D | 1.20 |
| TEC126 | Switch Start | 1 x 26w | TC - D | 1.25 |
| TEC213 | Switch Start | 2 x 13w | TC - D | 1.30 |
| TEC218 | Switch Start | 2 x 18w | TC - D | 1.30 |
| TEC226 | Switch Start | 2 x 26w | TC - D | 1.40 |
| TEC132 | High Frequency only | 1 x 32w | TC - TE | 1.20 |
| TEC142 | High Frequency only | 1 x 42w | TC - TE | 1.20 |
| TEC232 | High Frequency only | 2 x 32w | TC - TE | 1.32 |

Accessories - Suffix

| | |
|--|--------------------------------|
| TECDL4 - Darklight Louvre | TECPD - Paracube Diffuser |
| TECAP - Angled Paracube | TECOG - Opal Glass (IP54) |
| TEC TL - Turbo Louvre | TECPG - Patterned Glass (IP54) |
| TECDG - Drop Glass* | TECDGR - Halo Drop Glass* |
| TEC SR/GR/WR - Silver/Gold/White Ring | TEC OB - Opal Bowl |
| TECCG/PC - Clear Glass/Polycarbonate (IP54) | |
| TECC2 - LG3 2001 65° (LG3 1996 CAT 2) Louvre | |
| TEC DL9 - Darklight Louvre | |

Control Gear Variants - Suffix

| | |
|-----|--|
| SS | Switch Start |
| HF | High Frequency |
| HFR | High Frequency Dimming (Analogue 1-10V) |
| DDC | Digital Dimming Control |
| E3 | Remote 3 Hour Maintained Emergency Version |



* use TEC DGA or DGRA if accessories are to be used when drop glass is in use.

For application advice and lighting designs please contact our lighting services department on: **01747 858120**

The information, technical specification and photography contained in this literature is representative of general models correct at the time of going to press. In line with our policy of continuous improvement Dextra Lighting Systems PLC reserve the right to make any modifications necessary to parts or details without prior notice. The information contained in this publication does not form part of any contract.
8-0304

Dextra

For further information contact:

Dextra Lighting Systems plc

Brickfields Business Park, Gillingham, Dorset SP8 4PX

Direct Sales: 01747 858100 Freephone Fax: 0800 7838444

Email: sales@dextralighting.co.uk Website: www.dextralighting.co.uk