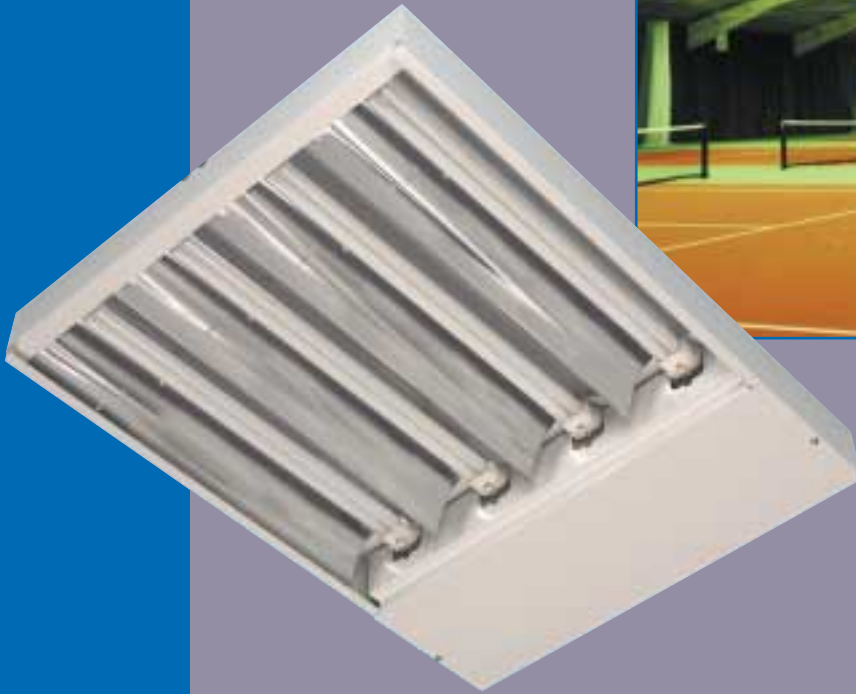


Herald

Industrial



Tennis Centre
Acknowledgments Pierce Platford - Stroud



An innovative fluorescent luminaire that satisfies high and low bay applications.

- An exciting new way to light large areas more efficiently and with greater control than ever before.
- Specially designed for commercial and industrial mounting heights between 5 and 10 metres on chains, trunking or direct to the ceiling.
- Available in 3, 4, 6 and 8 TCL 55w lamp versions, with a selection of control gear including high frequency as standard, double switching and dimming.
- Designed and manufactured in modern facilities using sophisticated equipment and assembly methods.

CE IP20/IP65 F



25
Years

Dextra

Herald

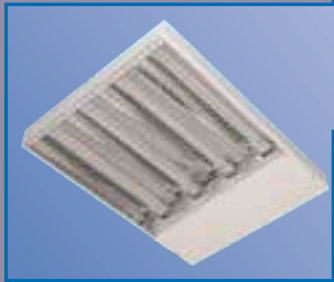
Industrial



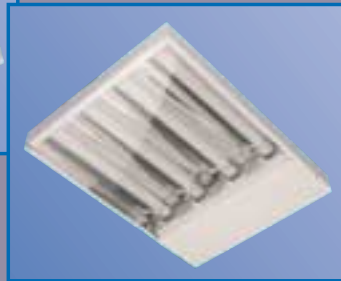
Herald 455 with Wire Guard



Herald 455 IP65



Herald 455 with Polycarbonate Controller



The Herald is designed for use as a surface commercial and industrial fitting, suitable for mounting heights between 5 and 10 metres on chains, trunking or direct to the ceiling.

Available in 3, 4, 6 and 8 TCL 55w lamp versions with up to 10,000 hour lamp life.

Manufactured from CR4GP steel, pre-treated through a three stage iron phosphate system for paint adhesion and durability, and then finished with a white, high gloss, epoxy polyester powder coated paint.

The reflectors are produced from high grade aluminium to maximize downward light output ratios.

The lamp source chosen not only provides excellent colour rendering, but has the advantage of natural colour temperature, lower replacement costs and reduced lamp lumen degradation.

IP65 455 version suitable for harsh environments. Polycarbonate or glass cover, must be specified on ordering.

Control gear options include high frequency as standard, double switching and dimming; all of which provide energy efficiency and flicker free running, with instant on/off capabilities (essential with rotating machinery).

The options of double switching and dimming enable an instant energy saving of up to 50% while still maintaining an acceptable uniformity of light at the work place.

By using electronic control gear the number of circuits can be reduced, which in turn reduces the total installed load.

Daylight or constant lux control offers the ultimate in automatic lighting flexibility - passing the energy savings straight onto the client.

3 hour maintained emergency versions available.

All models are available with polycarbonate controller or wire guard options. These offer a level of impact protection ideal for industrial and sports use.

Special derivatives available on request.

Manufactured to BSEN 60598 specification and CE marked to comply with EMC regulations.

Full technical data sheet and photometrics available on request.

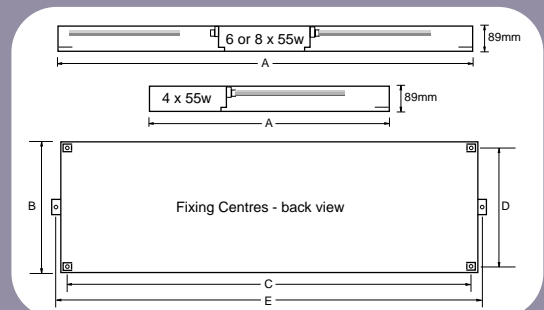
Dextra offer a free comprehensive lighting design and advice service to promote the benefits of this totally new lighting concept to the end user. Please contact our Lighting Services Department for further information.

Order Details

Order Code	Lamps	Weight (kg)	Dimensions				
			A	B	C	D	E
HER 355	3 x 55w TCL	6.10kg	826mm	464mm	786mm	424mm	876mm
HER 455	4 x 55w TCL	8.10kg	826mm	614mm	786mm	574mm	876mm
HER 455 IP65 PC/GL	4 x 55w TCL	21.50kg	826mm	614mm	766mm	554mm	876mm
HER 655	6 x 55w TCL	10.50kg	1460mm	464mm	1409mm	424mm	1510mm
HER 855	8 x 55w TCL	14.50kg	1506mm	614mm	1409mm	574mm	1556mm

Control Gear Variants - Suffix

Code	Description	Weight (kg)		
PC	Polycarbonate Controller	HER455: 1.30kg	HER655: 2.00kg	HER855: 2.60kg
WG	Wire Guard	HER455: 1.65kg	HER655: 2.65kg	HER855: 3.30kg
DS	Double Switching Facility			
HFR	High Frequency Dimming (Analogue 1 - 10 v)			
DDC	Digital Dimming Control			
E3	3 Hour Maintained Emergency Pack (Integral)			
PS	Photo-Cell Sensor (to be used in conjunction with HFR or DDC)			



For application advice and lighting designs please contact our lighting services department on: **01747 858120**

The information, technical specification and photography contained in this literature is representative of general models correct at the time of going to press. In line with our policy of continuous improvement Dextra Lighting Systems PLC reserve the right to make any modifications necessary to parts or details without prior notice. The information contained in this publication does not form part of any contract.
9-0304

Dextra

For further information contact:

Dextra Lighting Systems plc

Brickfields Business Park, Gillingham, Dorset SP8 4PX

Direct Sales: 01747 858100 Freephone Fax: 0800 7838444

Email: sales@dextralighting.co.uk Website: www.dextralighting.co.uk