



Customer service centre for national sales enquiries.



Sales hotline
0870 240 2400

e-mail: sales@hager.co.uk



Technical engineers offer both national and local support.

Technical helpline
0870 607 6677

e-mail: technical@hager.co.uk

Hager online
www.hager.co.uk

For general information on Hager brands
e-mail: info@hager.co.uk

Hager Tailored Solutions

A new service geared to your on site needs.

As Client requirements become more sophisticated, demands on electrical installation designs are greater. Many electrical distribution solutions require something that cannot be purchased off the shelf.



Whether it is an unusual configuration or simply speed on site that is an issue, Hager's tailored solutions supplies the answer.



This new "tailored solutions" service puts the power of our design engineers at your fingertips. You give us the specification and we will deliver what you need with the peace of mind of factory assured quality to ISO 9001:2000.



From preassembled standard distribution units to bespoke composite panelboards, from plug in distribution boards to switchboards we can provide the solution and we will deliver to site to an agreed deadline and to specification.

All the power of an experienced design engineering team and an ISO 9001:2000 manufacturing plant is just a telephone call away.

Pre-assembled Standard Distribution Boards

Factory assembly of standard distribution boards with standard incoming and outgoing devices. Providing the installer with all products factory assembled and ready for cabling.

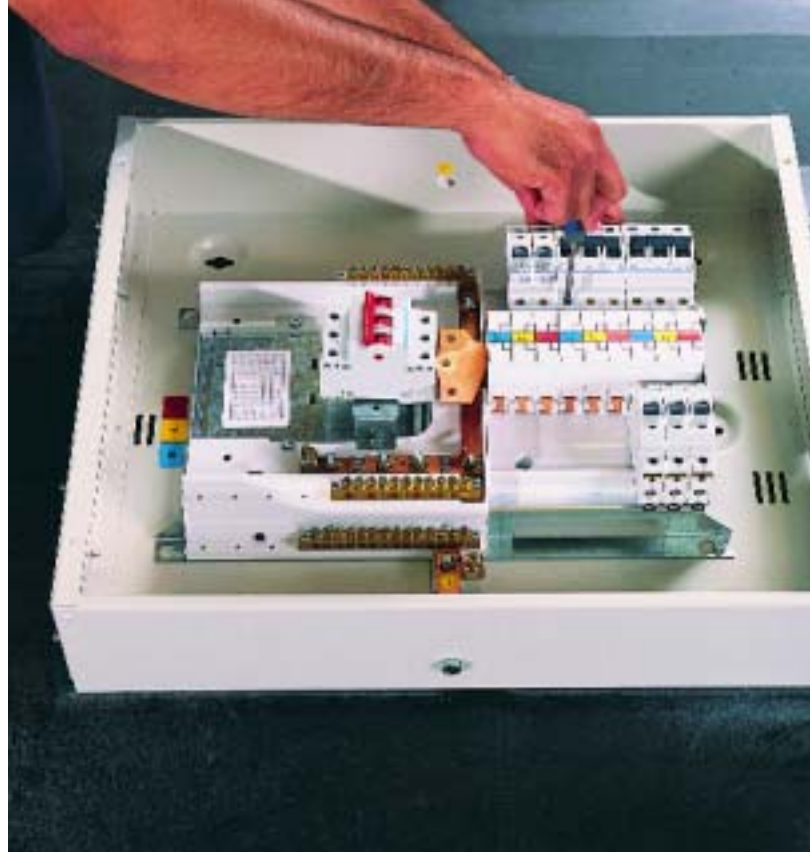
Products

Vision Consumer Units
with 6kA circuit breakers,
RCBO's or BS 1361 fuses

Invicta 63 Mk2 TP&N Boards
with 10kA circuit breakers
or RCBOs

Invicta 125 Panelboards
with moulded case circuit
breakers**

Invicta 250 Panelboards
with moulded case circuit
breakers**



Typical Applications

Fast track commercial
projects.

Housing developments.

Benefits

- Speeds up installation time on site.
- Reduces time spent collating boards, incomers and devices on site.
- Circuit way labels available.
- Cartons are labelled with your unique board reference.***
- Delivery direct to site.
- Delivery in 5* working days.

* Delivery time from receipt of the order and all relevant information (schedules).

** 25kA H125 frame devices extend delivery times to 15 days.

*** Unique board reference to be supplied at time of order.

Delivery times are subject to product availability.

Tailored Consumer Units

Factory assembly of non-standard consumer units, special configurations in standard Vision enclosures or JKU metal din-rail enclosures. Providing an exact product that meets the requirements of your particular installation needs.

Typical Applications

Multi-tariff installations.

Large residential dwellings.

Products

Vision Consumer Units

Invicta Enclosures

Benefits

- Speeds up installation time on site.
- Reduces time spent adapting or assembling boards on site.
- Drawings provided to verify your requirements.
- Factory tested.
- Large number of outgoing circuits can be catered for.
- Circuit way labels available.
- Products are given a unique part reference.
- Delivery direct to site.
- Delivered in 5* working days.



* Delivery time from receipt of the order.

Delivery times are subject to product availability

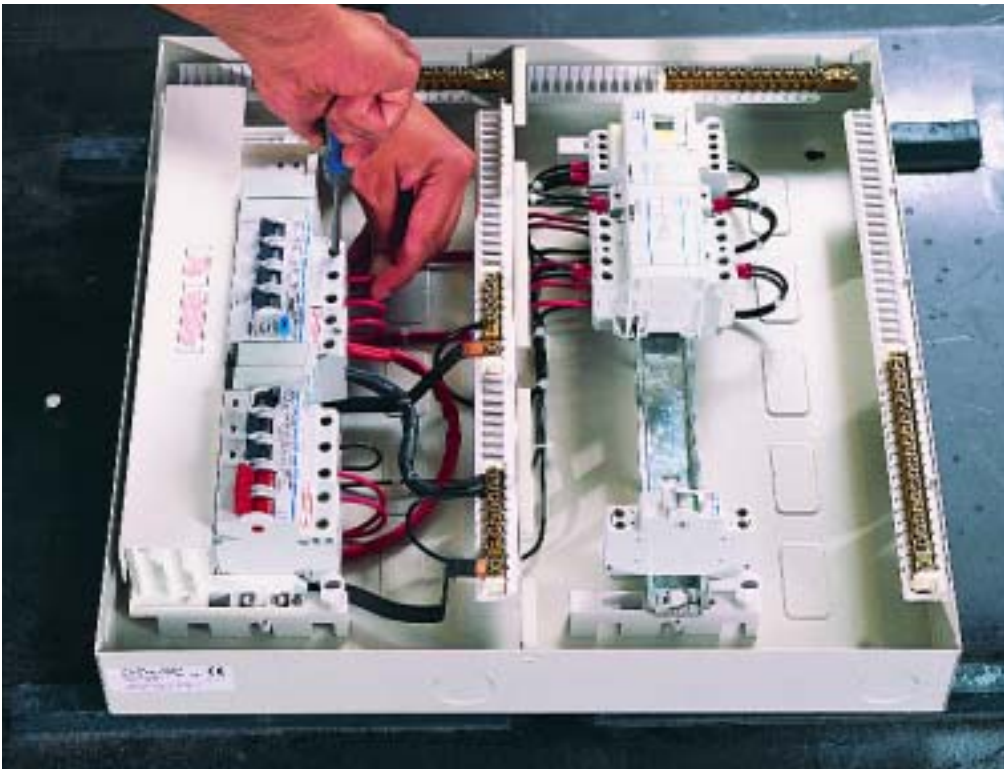
Pre-wired Option

Factory assembled distribution boards fitted with control and automation products, for example timeclocks and contactors internally wired and ready for connection of final circuit wiring.

Typical Applications

Hotel key card installations.

Off-peak heating systems.



* Delivery time from receipt of the order.

Delivery times are subject to product availability.

Benefits

- Speeds up installation time.
- Provides control solutions for the customer.
- Factory tested.
- Circuit way labels available.
- Products are given a unique part reference.
- Delivery in 8* working days.

Pluggable Option

Factory assembly of pluggable distribution boards. Circuit breakers are wired to 'WAGO' sockets fitted into the enclosure enabling final circuit cabling to be simply plugged in.

Typical Applications

Portable buildings.
Pre fabricated buildings.
Exhibition stands.

Products

Vision Consumer Units
Invicta Enclosures
Invicta 63 Mk2
TP&N Boards



Benefits

- Speeds up installation time on site.
- Final circuits are simply plugged in on site.
- Factory tested.
- Circuit way labels available.
- Products are given a unique part reference.
- Delivery in 8* working days.

* Delivery time from receipt of the order.

Delivery times are subject to product availability.

Modified Enclosures

Factory assembly of standard metal distribution boards available with specific knock-outs or apertures ready for pre-determined cable entries, or provided with additional brackets to facilitate fixing of din-rail style products in the enclosure.



Typical Applications

- OEM projects.
- Installations with metering requirements.
- Common cable entry requirements.



Products

- Vision Metal Consumer Units
- Invicta Enclosures
- Invicta 63 Mk2 TP&N boards
- Invicta 125 Panelboards
- Invicta 250 Panelboards

* Delivery time from receipt of the order and all relevant information.

Delivery times are subject to product availability.

Benefits

- Speeds up installation time on site.
- Reduces time spent preparing boards for cable entry on site.
- Delivery direct to site.
- Delivered in 15* working days.

Composite Systems

Factory prepared standard metal distribution boards ready for assembly on site with apertures pre-cut to allow cable access between the various enclosures.

Factory prepared Invicta 250 Panelboards with electrical linking kits to provide multi-outgoing way solutions.

Typical Applications

Fast track commercial projects.

Installations which have a high numbers of final circuits.



Products

Invicta 63 Mk2 TP&N Boards

Invicta 125 Panelboards

Invicta 250 Panelboards

Benefits

- Speeds up installation time on site.
- Reduces time spent preparing boards for cabling on site.
- Allows composite and large systems to be site assembled with minimum fuss.
- Delivered direct to site.
- Delivered in 15* working days.

* Delivery time from receipt of the order and all relevant information.

Delivery times are subject to product availability.

Bespoke Composite Systems

Factory prepared distribution boards ready for assembly on site with apertures pre-cut to allow cable access between the various enclosures, combining Panelboards and TP&N boards into bespoke composite panel.

Standard metal distribution boards designed to accommodate customer specified OEM equipment.



Products

Invicta 63 Mk2 TP&N Boards

Invicta 125 Panelboards

Invicta 250 Panelboards

Typical Applications

Commercial and industrial single and three phase applications.

Complex circuit protection systems.

Fast-track distribution panel replacement.

* Delivery time from receipt of the order and all relevant information.

Delivery times are subject to product availability.

Benefits

- Speeds up installation time on site.
- Reduces time spent preparing boards on site.
- Allows composite and large systems to be site assembled with minimum fuss.
- Delivery direct to site.
- Delivered in 25* working days.

Switchboard Solutions

Hager have teamed up with a panelbuilder partner to provide switchboard solutions up to 2500A. Switchboards use Hager devices in high specification Form 4 metalwork systems.



Typical Applications

Main LV distribution systems up to 2500A.

Commercial and industrial applications.

Benefits

- Separation up to Form 4-7.
- IP ratings to IP65.
- Busbars tested up to 100kA.
- ASTA Product Certification.
- Delivery* direct to site.

Please contact us for details.

* Delivery typically 4 - 6 weeks.

Please contact us for fast track delivery.

Klik

Secure Connection System

Klik's secure connection system has transformed the speed and efficiency of electrical connections across the whole lighting and power spectrum. With the introduction of Klik's pre-wired products installers can reduce the installation time required by reducing the amount of on-site wiring required.



Tailored Solutions

- Speeds up installation time on site.
- Cable lengths to suit your specification (standard lengths 1, 2, 3 and 4m).
- Screened cable - for applications such as Hospitals.
- Plug connectors fitted for connection to luminaries, i.e. Wieland, Wago, etc.

Typical Applications

Commercial installations.
Hospitals.

Products

Klik Pre-wired LSC
KLDS
KDCS

Tehalit

With Tehalit's extensive product range you are sure to find an off the self solution to meet your needs. If however you can't find exactly what you are looking for then consult us and we will look at ways in which we can adapt the products for your particular requirements:

Specifying the system to suit your project, or ordering the necessary components really couldn't be easier. However, if you need any assistance please consult our sales or technical helpline.



Products

Perimeter Systems
C60
CA60
BRS



Tailored Solutions

- Bespoke trunking lengths up to 6m (standard length is 2m).
- RAL colours - a comprehensive range of colours.
- Types of finish - wooded effects.
- Engraving trunking with a company name or logo.
- Special steel profiles.
- Panel Systems.

Typical Applications

Prestige installations.

Education.

Hospitals.

Contacting Us

To discuss your requirements with one of our Sales Engineers please contact your nearest office listed below

Bristol Regional Centre

135 Aztec West
Almondsbury
Bristol
BS32 4UB
Tel: 01454 616245
Fax: 01454 617172

Falkirk Regional Centre

5a Callendar Business Park
Callendar Road
Falkirk
FK1 1XR
Tel: 01324 632128
Fax: 01324 631294

London Regional Centre

Warwick House
65-66 Queen Street
London
EC4R 1EB
Tel: 0207 3293891
Fax: 0207 3293893

Midlands Regional Centre

Hortonwood 50
Telford
Shropshire
TF1 7FT
Tel: 01952 675615
Fax: 01952 675626

Wakefield Regional Centre

Brindley Way
Wakefield 41 Ind. Estate
Wakefield
West Yorkshire
WF2 0XQ
Tel: 01924 871103
Fax: 01924 824429

Visit our website:

www.hager.co.uk

e-mail us @

info@hager.co.uk

sales@hager.co.uk

technical@hager.co.uk



National Sales Hotline

0870 240 2400

National Sales Faxline

0870 240 0400

National Technical Support Helpline

0870 607 6677





Hager Ltd
Hortonwood 50
Telford
Shropshire
TF1 7FT