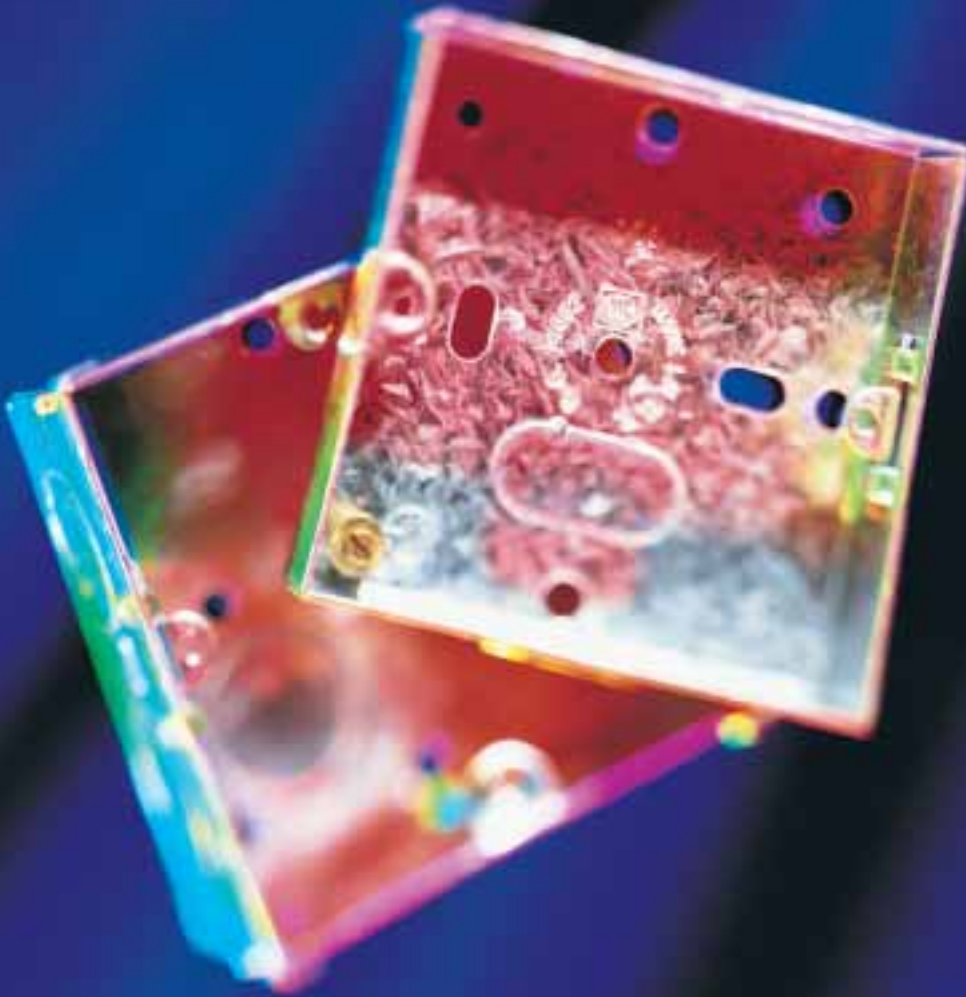


WHITE



Flush and surface mounted metal boxes and frames, surface PVC and moulded urea boxes, frames and accessories.

All MK flush metal boxes are manufactured from superior materials and are fitted with earth terminals, an adjustable lug for out of square alignment and include more than an adequate number of knockouts.

## STEEL BOXES

16mm  
PLASTERDEPTH  
FLUSH

25mm  
FLUSH



**3995 ZIC**  
FOR 1, 2 AND  
3 GANG  
PLATESWITCHES

10

**861 ZIC**  
1 GANG  
ONE ADJUSTABLE LUG

10

**862 ZIC**  
2 GANG  
ONE ADJUSTABLE LUG

5

With earth terminal and adjustable lug

DIMENSIONS:  
72 x 72mm  
FIXING CENTRES:  
60.3mm  
BS.4662: 1970

With earth terminal, and adjustable lug

DIMENSIONS:  
1 gang: 75 x 75mm  
2 gang: 75 x 135mm  
FIXING CENTRES:  
1 gang: 60.3mm  
2 gang: 120.6mm  
KNOCKOUTS:  
1 gang: 12 x 20mm  
2 gang: 16 x 20mm  
BS.4662: 1970

## STEEL BOXES

35mm  
FLUSH

46mm  
47mm  
FLUSH



**866 ZIC**  
1 GANG  
ONE ADJUSTABLE LUG

10

**886 ZIC**  
2 GANG  
ONE ADJUSTABLE LUG

5

DIMENSIONS:  
1 gang: 75 x 75mm  
2 gang: 75 x 135mm  
FIXING CENTRES:  
1 gang: 60.3mm  
2 gang: 120.6mm

KNOCKOUTS:  
1 gang: 11 x 20mm  
2 gang: 12 x 20mm  
3 x 25mm

BS.4662: 1970

**877 ZIC**  
1 GANG  
46MM DEEP

10

**878 ZIC**  
2 GANG  
47MM DEEP  
ONE ADJUSTABLE LUG

5

DIMENSIONS:  
1 gang: 75 x 75mm  
2 gang: 75 x 135mm  
FIXING CENTRES:  
1 gang: 60.3mm  
2 gang: 120.6mm

KNOCKOUTS:  
877: 1 x 25mm  
9 x 20mm  
878: 6 x 25mm  
10 x 20mm

BS.4662: 1970

MOUNTING BOX ACCESSORIES see page 182

## STEEL BOXES

25mm  
FLUSH



**K863** 5  
FOR 3 GANG  
K2737 LOGIC PLUS  
SWITCHSOCKET

Fitted with two earth terminals.  
Two adjustable lugs.  
DIMENSIONS: 203 x 73mm  
FIXING CENTRES: 180.9mm  
KNOCKOUTS:  
20 x 20mm  
BS.5733: 1995

41mm  
SURFACE FOR USE WITH LOGIC PLUS



**K2211 ALM** 5  
1 GANG  
WITHOUT KNOCKOUTS

**K2212 ALM** 5  
2 GANG  
WITHOUT KNOCKOUTS

All boxes are fitted with an earth terminal.  
DIMENSIONS:  
1 gang: 86 x 86mm  
2 gang: 86 x 146mm  
FIXING CENTRES:  
1 gang: 60.3mm  
2 gang: 120.6mm  
BS.5733: 1995



**K2213 ALM** 5  
1 GANG  
5 X 20MM KNOCKOUTS

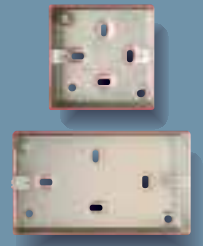
**K2214 ALM** 5  
2 GANG  
7 X 20MM KNOCKOUTS



**2211 ALM** 5  
1 GANG  
WITHOUT KNOCKOUTS

**2212 ALM** 5  
2 GANG  
WITHOUT KNOCKOUTS

All boxes are fitted with an earth terminal.  
DIMENSIONS:  
1 gang: 86 x 86mm  
2 gang: 86 x 146mm  
FIXING CENTRES:  
1 gang: 60.3mm  
2 gang: 120.6mm  
BS.5733: 1995



**2213 ALM** 5  
1 GANG  
5 X 20MM KNOCKOUTS

**2214 ALM** 5  
2 GANG  
7 X 20MM KNOCKOUTS

41mm  
SURFACE



**2001 ALM** 5  
1 GANG  
WITHOUT KNOCKOUTS

**2002 ALM** 5  
2 GANG  
WITHOUT KNOCKOUTS

All boxes are fitted with an earth terminal.  
DIMENSIONS:  
1 gang: 86 x 86mm  
2 gang: 86 x 146mm  
FIXING CENTRES:  
1 gang: 60.3mm  
2 gang: 120.6mm  
BS.5733: 1995

48mm  
SURFACE



**K5400 WHI** 1  
2 GANG  
4 X 20MM KNOCKOUTS  
4 X 25MM KNOCKOUTS

DIMENSIONS:  
86 x 146mm  
FIXING CENTRES:  
120.6mm  
BS.5733: 1995

55mm  
FLUSH



**5120 ALM** 1  
FOR FLUSH  
COOKER CONTROL UNIT  
K5011 WHI

Fitted with two earth terminals.  
DIMENSIONS:  
152 x 140 x 55mm  
KNOCKOUTS: 5 x 25mm.  
Two in each of the top & bottom, one in the back.  
BS.4177: 1992

65mm  
SURFACE



**5268 ALM** 1  
FOR 32 AMP  
TP & N SWITCHES  
5114 WHI

Fitted with 2 earth terminals  
DIMENSIONS:  
178 x 114 x 65mm  
KNOCKOUTS:  
5 x 25mm.  
Two in each of the top and bottom, one in the back.  
BS.5733: 1995

40mm  
SPARE BOXES



**K829 ALM** 10  
1 GANG  
WITHOUT KNOCKOUTS

**K830 ALM** 5  
2 GANG  
WITHOUT KNOCKOUTS

**K899 ALM** 10  
1 GANG  
5 X 20MM KNOCKOUTS

**K897 ALM** 5  
2 GANG  
8 X 20MM KNOCKOUTS

Spares or replacements for the surface Metalclad Plus range. All boxes are fitted with an earth terminal.  
BS.5733: 1995

WHITE

STEEL BOXES

ARCHITRAVE  
FLUSH

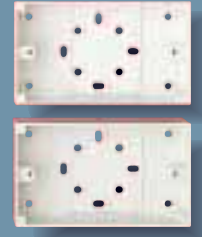
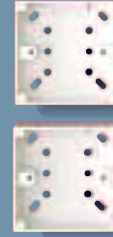
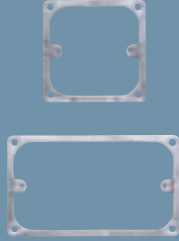
DUAL  
FLUSH

METAL  
FRAMES FOR  
PANEL  
MOUNTING

PVC BOXES

19mm  
SURFACE

32mm  
SURFACE



**3921 ZIC** **10**  
1 GANG

**887 ZIC** **5**  
DUAL BOX

**K2200** **10**  
1 GANG

**2120 WHI** **10**  
FOR 1, 2 AND

**2180 WHI** **10**  
1 GANG

**2182 WHI** **5**  
2 GANG

**3922 ZIC** **5**  
2 GANG

**888 ZIC** **10**  
DIVIDING SCREEN  
FOR DUAL BOX

**K2202** **5**  
2 GANG

3 GANG  
PLATESWITCHES

**2181 WHI** **10**  
1 GANG

**2183 WHI** **5**  
2 GANG

DIMENSIONS:  
1 gang: 75 x 27 x 27mm  
2 gang: 136 x 27 x 27mm  
FIXING CENTRES:  
1 gang: 60.3mm  
2 gang: 120.6mm  
KNOCKOUTS:  
1 gang: 3 x 16mm  
2 gang: 4 x 16mm  
BS.4662: 1970

Dual box 887 ZIC will accept any two flush accessories with 86mm square plates and two M3.5 fixing holes on 60.3mm centres.  
DIMENSIONS:  
75 x 161 x 35mm  
KNOCKOUTS: 16 x 20mm  
BS.4662: 1970

FIXING CENTRES:  
1 gang: 60.3mm  
2 gang: 120.6mm  
BS.5733: 1995

With earth terminal  
DIMENSIONS: 87 x 87mm  
FIXING CENTRES: 60.3mm  
KNOCKOUTS 'Cut-out' provided in top and bottom for 16mm oval PVC conduit. 20mm round 'push-out' type knockout in base for cable entry. Fixing holes are also provided for mounting to wall or over BS.4568 Pt. 2 small circular boxes. BS.5733: 1995

DIMENSIONS: 87 x 87mm  
FIXING CENTRES: 60.3mm  
KNOCKOUTS:  
**2180:** One 'push-out' for 20mm oval conduit in top, one 'cut-out' for 20mm or 25mm oval conduit and one 20mm round 'push-out' in the base.  
**2181:** One 'push-out' for 20mm round conduit in top and one 20mm round 'push-out' in base. BS.5733: 1995

DIMENSIONS: 87 x 148mm  
FIXING CENTRES: 120.6mm  
KNOCKOUTS:  
**2182:** Two 'push-outs' for 20mm oval conduit in top, two 'cut-outs' for 20mm or 25mm oval conduit and one 20mm round 'push-out' in base  
**2183:** One 'push-out' for 20mm round conduit in top and one 20mm round 'push-out' in base. BS.5733: 1995

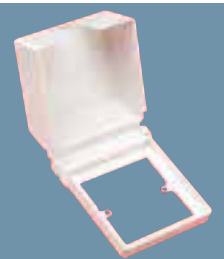
BLANK  
PLATES

METALCLAD PLUS

PVC BOXES

32mm  
SURFACE

GUARDIAN  
SOCKET  
COVER



**K3390 ALM** **5**  
FOR 1 GANG  
SURFACE BOXES  
K899 & K829

**3390 ALM** **10**  
FOR 1 GANG SURFACE  
BOXES 899 & 829

**K2181 WHI** **10**  
FOR 1 GANG LOGIC PLUS POWER ACCESSORIES

**GWR/1** **1**  
1 GANG

**K3369 ALM** **5**  
FOR 2 GANG  
SURFACE BOXES  
K830 & K897

**3370 ALM** **10**  
FOR 1 GANG SURFACE  
BOXES 891 & 821

**K2183 WHI** **5**  
FOR 2 GANG LOGIC PLUS POWER ACCESSORIES

DIMENSIONS:  
K3390: 86 x 86mm  
K3369: 86 x 147mm  
FIXING CENTRES:  
K3390: 60.3mm  
K3369: 120.6mm  
BS.5733: 1995

**3369 ALM** **5**  
FOR 2 GANG SURFACE  
BOXES 892 & 822

**K2185 WHI** **5**  
FOR 3 GANG LOGIC PLUS POWER ACCESSORIES

DIMENSIONS:  
3390: 81 x 81mm  
3370: 76 x 76mm  
3369: 76 x 136mm  
FIXING CENTRES:  
1 gang: 60.3mm  
2 gang: 120.6mm

KNOCKOUTS:  
**K2181:** One 'cut-out' for 20mm round conduit in top face, one 'cut-out' for 20mm or 25mm oval conduit in lower face and one 20mm round 'push-out' in the base.  
**K2183 and K2185:** One 'cut-out' for 20mm round conduit in top face, two 'cut-outs' for 20mm or 25mm oval conduit in lower face and one 20mm round 'push-out' in the base. Both boxes are suitable for fitting over 1 gang and 2 gang BS.4662 flush steel boxes respectively

DIMENSIONS:  
1 gang: 87 x 87mm  
2 gang: 87 x 148mm  
3 gang: 87 x 208mm  
FIXING CENTRES:  
1 gang: 60.3mm  
2 gang: 120.6mm  
3 gang: 180.9mm  
BS.4662: 1970 where applicable

Accessories not supplied with unit.  
FIXING CENTRES:  
60.3mm

## MOULDED BOXES

ARCHITRAVE  
SURFACE

16mm  
SURFACE

30mm  
SURFACE

32mm  
SURFACE

44mm  
SURFACE



**K2151 WHI** 10  
1 GANG  
ARCHITRAVE BOX

**K2152 WHI** 5  
2 GANG  
ARCHITRAVE BOX

Earth terminal fitted in base of boxes.

DIMENSIONS:  
1 gang: 87 x 33 x 16mm  
2 gang: 148 x 33 x 16mm

FIXING CENTRES:  
1 gang: 60.3mm  
2 gang: 120.6mm

BS.5733: 1995

**K2160 WHI** 10  
FOR 1, 2 AND  
3 GANG LOGIC PLUS  
PLATESWITCHES

**K2161 WHI** 5  
FOR 4 AND 6 GANG  
LOGIC PLUS  
PLATESWITCHES

Earth terminal fitted in base of boxes. Knockouts provided in sides and bases.

DIMENSIONS:  
1 gang: 87 x 87mm  
2 gang: 87 x 148mm

FIXING CENTRES:  
1 gang: 60.3mm  
2 gang: 120.6mm

BS.5733: 1995

**K2140 WHI** 10  
FOR 1 GANG  
LOGIC PLUS  
POWER ACCESSORIES.

**K2142 WHI** 5  
FOR 2 GANG  
LOGIC PLUS  
POWER ACCESSORIES.

Knockouts in base and sides for cable entry

**K2142 and K2153** are suitable for fitting over 1 gang and 2 gang BS.4662 flush steel boxes respectively

**K2153 WHI** 5  
FOR 3 GANG  
LOGIC PLUS  
POWER ACCESSORIES.

DIMENSIONS:  
1 gang: 87 x 87mm  
2 gang: 87 x 148mm  
3 gang: 87 x 208mm

FIXING CENTRES:  
1 gang: 60.3mm  
2 gang: 120.6mm  
3 gang: 180.9mm

BS.5733: 1995

**2140 WHI** 10  
FOR 1 GANG  
POWER ACCESSORIES  
SQUARE CORNERS

Knockouts are provided in base and sides for cable entry

DIMENSIONS:  
1 gang: 87 x 87mm  
2 gang: 87 x 148mm

FIXING CENTRES:  
1 gang: 60.3mm  
2 gang: 120.6mm

BS.5733: 1995

**2031 WHI** 10  
FOR 1 GANG  
POWER ACCESSORIES

Knockouts in base and sides for cable entry.

DIMENSIONS:  
87 x 87mm

FIXING CENTRES:  
60.3mm

BS.5733: 1995

## MOULDED BOXES

DRY LINING  
35mm  
FLUSH

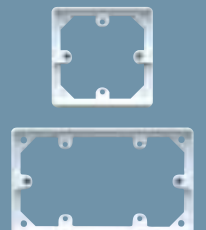
MI CABLE BOXES  
37mm  
SURFACE

DUAL BOX  
38mm  
SURFACE

40mm  
SURFACE

FLANGE BOXES  
45mm  
FLUSH

## MOUNTING FRAMES FOR TRUNKING



**QFB/1 WHI** 20  
1 GANG

**QFB/2 WHI** 10  
2 GANG

All round flange for flush fit. One piece moulded lug automatically snaps into place. No rear projections. Clamp device on cable entry. Will accommodate partition thicknesses between 6mm and 16mm. Earth terminal facility.

BS.4662: 1970 where applicable

**K2131 WHI** 5  
1 GANG  
10 CLAMPS

**K2132 WHI** 5  
2 GANG  
12 CLAMPS

Clamps accept 20mm sealing pots.

DIMENSIONS:  
1 gang: 92 x 92mm  
2 gang: 92 x 152mm

FIXING CENTRES:  
1 gang: 60.3mm  
2 gang: 120.6mm

BS.5733: 1995

**K2025 WHI** 5  
FOR MOUNTING  
TWO X 1 GANG  
LOGIC PLUS  
ACCESSORIES

This box has two slots in base with 60.3mm and 120.6 fixing centres for fitting over BS.4226 flush boxes. Knockouts provided for cable entry.

Includes integral dividing fillet.

DIMENSIONS: 86 x 172 mm  
BS.5733: 1995

**K2031 WHI** 10  
FOR 1 GANG  
LOGIC PLUS  
POWER ACCESSORIES

**K2172 WHI** 5  
FOR 2 GANG  
LOGIC PLUS 45 AMP  
DP SWITCHES

Knockouts provided in sides and base.

**K2172:** Earth terminal fitted in base of box.

DIMENSIONS:  
**K2031:** 87 x 87mm  
**K2172:** 87 x 148mm

FIXING CENTRES:  
**K2031:** 60.3mm  
**K2172:** 120.6mm

BS.5733: 1995

**K2061 WHI** 5  
1 GANG

**K2062 WHI** 5  
2 GANG

DIMENSIONS:  
**K2061:** 88 x 88mm  
**K2062:** 88 x 148mm

FIXING CENTRES:  
**K2061:** 60.3mm  
**K2062:** 120.6mm

BS.5733: 1995

**K2133 WHI** 10  
2 GANG 20MM DEEP  
FOR LOGIC PLUS  
ACCESSORIES

**K2134 WHI** 10  
1 GANG 20MM DEEP  
FOR LOGIC PLUS  
ACCESSORIES

FIXING CENTRES:  
1 gang: 60.3mm  
2 gang: 120.6mm

BS.5733: 1995

## WHITE

## LOGIC PLUS ACCESSORIES/BOX COMPATIBILITY CHART

SURFACE MOUNTING	Depth: (mm)								
	16 Moulded	30 Moulded	32* PVC	38 Moulded	40 Moulded	41 Steel	41* Steel	48* Steel	55
Moulded									
1 gang Sockets (13A)		K2140	K2181	K2025	K2031	K2211 ALM	K2213 ALM		
2 gang Sockets		K2142	K2183		K2172	K2212 ALM	K2214 ALM	K5400	
3 gang Sockets		K2153	K2185						
RCD Sockets					K2172	K2212 ALM	K2214 ALM	K5400	
Filtered Sockets					K2172	K2212 ALM	K2214 ALM	K5400	
Connection Units		K2140	K2181	K2025	K2031	K2211 ALM	K2213 ALM		
20A DP Switches		K2140	K2181	K2025	K2031	K2211 ALM	K2213 ALM		
K5105 32A DP Switch		K2140	K2181	K2025	K2031	K2211 ALM	K2213 ALM		
K5205, K5215 (CK & SH)					K2172	K2212 ALM	K2214 ALM		
K5230								K5400	
K5060, K5061					K2212	K2214 ALM		K5400	
K5040, K5041									
K5001									
K700		K2140	K2181	K2025		K2211 ALM	K2213 ALM		
K701					K2172				
1, 2 & 3 gang Switches	K2160	K2140	K2181	K2025	K2031	K2211 ALM	K2213 ALM		
4 & 6 gang Switches	K2161	K2142	K2183		K2172	K2212 ALM	K2214 ALM	K5400	
1 gang Architrave Switch	K2151								
2 gang Architrave Switch	K2152								
Dimmers using Pattress									
K1501, K1511, K1531, K1532	K2160								
K1521, K1534, K1533, K1535	K2160								
Dimmers not using Pattress									
K1501, K1511, K1531, K1532		K2140	K2181	K2025	K2031				
K1521, K1534, K1533, K1535		K2140	K2181	K2025		K2211 ALM	K2213 ALM		
K191 & K192		K2140	K2181	K2025		K2211 ALM	K2213 ALM		
K193 & K194		K2142	K2183			K2212 ALM	K2214 ALM	K5400	
Data/Telecom Plates	K2160	K2140	K2181	K2025		K2211 ALM	K2213 ALM		

FLUSH MOUNTING	Depth: (mm)							
	16	25*	27*	35*	45	46*	47*	55
1 gang Sockets (13A)		861 ZIC		866 ZIC	K2061	877 ZIC		
2 gang Sockets		862 ZIC		886 ZIC	K2062		878 ZIC	
3 gang Sockets		K863						
RCD Sockets				886 ZIC	K2062		878 ZIC	
Filtered Sockets				886 ZIC	K2062		878 ZIC	
Connection Units				866 ZIC	K2061	877 ZIC		
20A DP Switches				866 ZIC	K2061	877 ZIC		
K5105 32A DP Switch				866 ZIC		877 ZIC		
K5205, K5215 (CK & SH)				886 ZIC	K2062		878 ZIC	
K5012								K5120 ALM
K5045					K2061	877 ZIC		
K5060, K5061				886 ZIC	K2061		878 ZIC	
K5011								K5120 ALM
K700		861 ZIC		866 ZIC	K2061	877 ZIC		
K701							878 ZIC	
1, 2 & 3 gang Switches	3995 ZIC	861 ZIC		866 ZIC	K2061	877 ZIC		
4 & 6 gang Switches		862 ZIC		886 ZIC	K2062			
1 gang Architrave Switch			3921 ZIC					
2 gang Architrave Switch			3922 ZIC					
Dimmers using Pattress								
K1501, K1511, K1531, K1532	3995 ZIC							
K1521, K1534, K1533, K1535	3995 ZIC						878 ZIC	
Dimmers not using Pattress								
K1501, K1511, K1531, K1532		861 ZIC		866 ZIC	K2061	877 ZIC		
K1521, K1534, K1533, K1535		861 ZIC			K2062	877 ZIC		
K191 & K192		861 ZIC		866 ZIC	K2061	877 ZIC		
K193 & K194		862 ZIC		886 ZIC	K2062		878 ZIC	
Data/Telecom Plates		861 ZIC		866 ZIC	K2061	877 ZIC		

 Box supplied with accessory

 Dependent upon modules used

\* With conduit entry knockouts

NOTE: the size of cable should be taken into consideration when choosing box depth