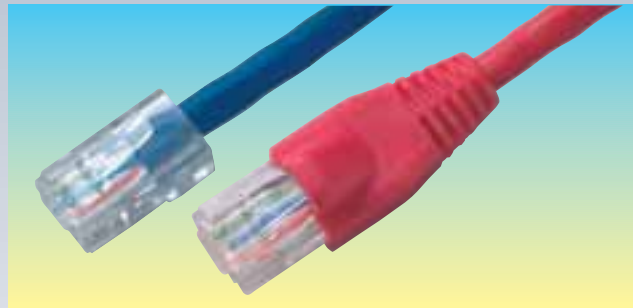




Dataworks represents a suite of structured cabling products to deliver Category 5 enhanced data and voice communications together with a 15 year System Performance Warranty*.

Each product conforms to the latest standards and matches the demanding criteria of modern datacoms installations.

* When system is installed by an MK Dataworks Authorised Installer.

**Cabinet****Cable****Patch leads****Patch panels****Tools****Connectors and Adaptors****Boxes****Adaptors****Frontplates****Dataworks training**

MK offers 1 day training programmes for this structured cabling range. For details please see page 137/139 or consult your MK representative or call 01268 563720

DATACOMS

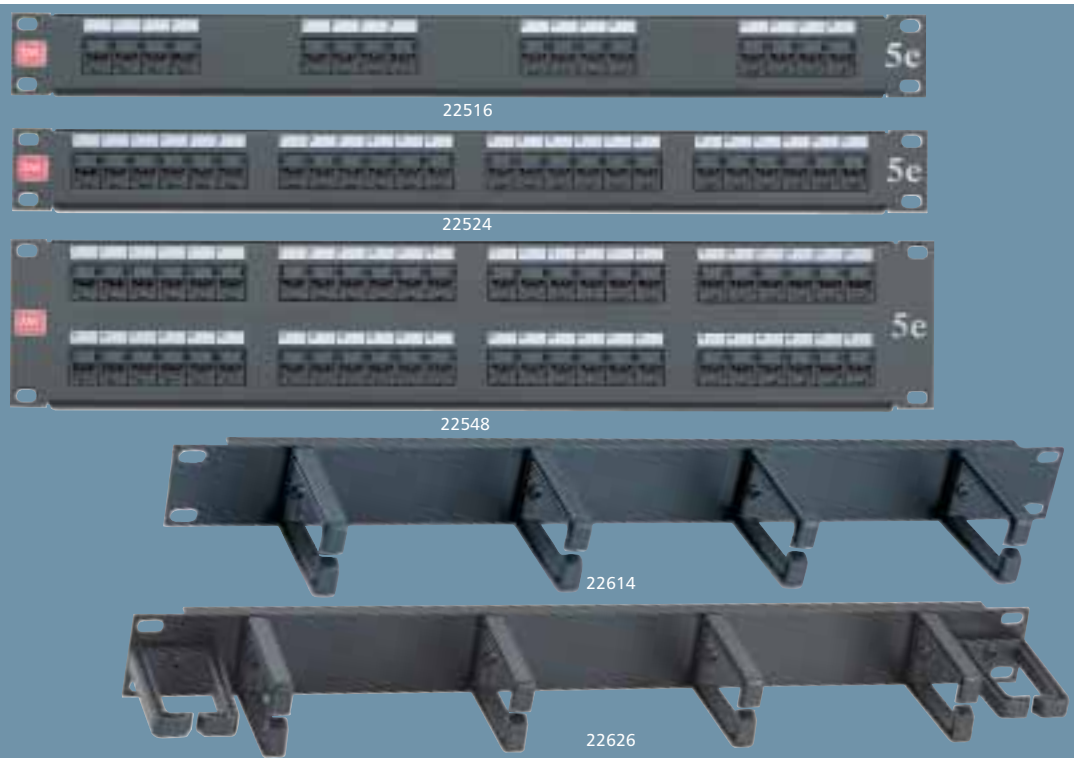
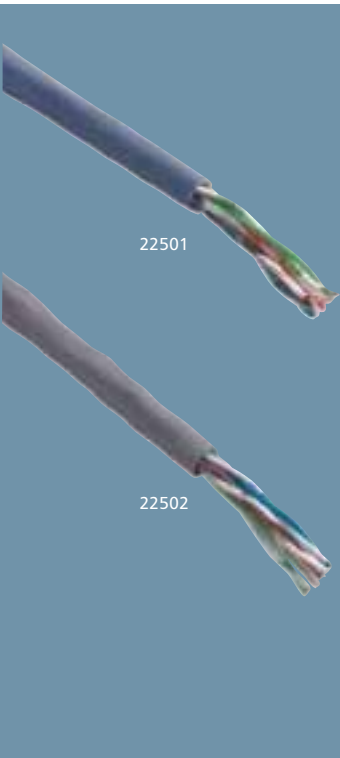
UTP CABLE

PATCH PANELS

MANAGEMENT BARS

CATEGORY 5e

UTP CATEGORY 5e



22501
SOLID UTP CAT 5e
305 METRES PER BOX

22502
SOLID UTP CAT 5e
LSF/ZH CABLE
305 METRES PER BOX

1 **22516**
RJ45 UTP KRONE IDC
PATCH PANEL
16 PORT 1U

1 **22524**
RJ45 UTP KRONE IDC
PATCH PANEL
24 PORT 1U

1 **22532**
RJ45 UTP KRONE IDC
PATCH PANEL
32 PORT 2U

1 **22548**
RJ45 UTP KRONE IDC
PATCH PANEL
48 PORT 2U

1 **22614**
MANAGEMENT BAR
4 RING, 1U

1 **22626**
MANAGEMENT BAR
6 RING, 1U

10 **22617**
CAGE NUTS WITH WASHERS
BLACK CROSSPOINT
PACK OF 4

Exceeds performance requirements of ISO 11801, EN 50173, TIA/EIA 568A

Includes panel mounting kit, ties and installation guide.

Includes panel mounting kit, ties and installation guide.

Management bars are made from lightweight aluminum with ABS rings.

DIMENSIONS:
44.5 x 483 x 33.5mm

DIMENSIONS:
89 x 483 x 33.5mm

PATCH LEADS

DATA CONNECTORS

TELEPHONE ADAPTORS

UTP CATEGORY 5e

CATEGORY 5e



22551 B GRY



22551 B BLU



22551 B YEL



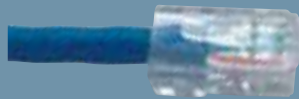
22552 B GRN



22552 B RED



22553 GRY



22553 BLU



22555 YEL



22555 GRN



22555 RED



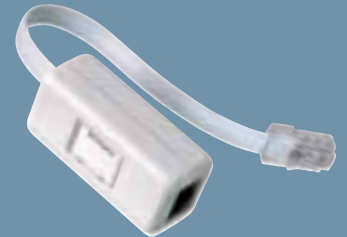
22645 WHI



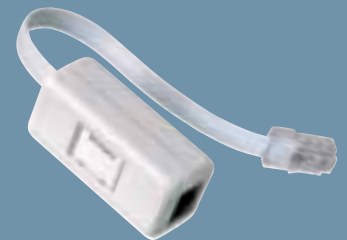
22545 WHI



22644 WHI



22580



22581

22551 B GRY
22551 B BLU
22551 B YEL
22551 B GRN
22551 B RED

CATEGORY 5e UTP
 PATCH LEAD
 1 METRE LENGTH

10
10
10
10
10

22552 B GRY
22552 B BLU
22552 B YEL
22552 B GRN
22552 B RED

CATEGORY 5e UTP
 PATCH LEAD
 2 METRE LENGTH

10
10
10
10
10

22553 B GRY
22553 B BLU
22553 B YEL
22553 B GRN
22553 B RED

CATEGORY 5e UTP
 PATCH LEAD
 3 METRE LENGTH

10
10
10
10
10

22555 B GRY
22555 B BLU
22555 B YEL
22555 B GRN
22555 B RED

CATEGORY 5e UTP
 PATCH LEAD
 5 METRE LENGTH

5
5
5
5
5

22640
 BOOTS
 PACK OF 10

22642
 SPARE PLUGS
 PACK OF 10

10
10

22645 WHI
 RJ45 UTP CAT 5e
 KEYSTONE JACK SHUTTERED OUTLET
 WITH LABEL AND WINDOW

5

22644 WHI
 RJ45 UTP CAT 5e
 ANGLED KEYSTONE JACK
 SHUTTERED OUTLET
 WITH LABEL AND WINDOW

5

22545 WHI
 RJ45 UTP CAT 5e
 SLIMLINE SHUTTERED OUTLET
 WITH LABEL AND WINDOW

5

22580
 LINE ADAPTOR
 RJ45
 TO BT MASTER

5

22581
 LINE ADAPTOR
 RJ45
 TO BT SECONDARY

5

22583
 LINE ADAPTOR
 RJ45
 TO BT PBX

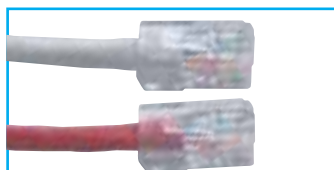
5

22584
 LINE ADAPTOR
 RJ45
 TO ISDN

5

22587
 LINE ADAPTOR
 RJ45
 TO RJ11

5



Unbooted leads are available for each length.

Delete suffix B from the list number eg. 22551 RED

All leads individually tested.

MOUNTING BOXES:
 Recommended box depth
 Keystone: 35mm, Slimline: 25mm*
 *with 9mm frontplate

DIMENSIONS:
 Keystone: 25 x 50 x 36mm
 Slimline: 25 x 50 x 24mm

TIA/EIA TS840A: Cat5e TIA/EIA 568A: Cat5e
 ISO/IEC 11801: Cat5e

Connects telephones and other devices to structured cabling system without rewiring the outlet.

DIMENSIONS:
 Connector lead length 75mm

DATACOMS

FRONTPLATES
WITH FITTED
DATA CONNECTORSFRONTPLATES
FOR DATA
CONNECTORS

22591 WHI



22592 WHI



22594 WHI



22596 WHI



22597 WHI



22599 WHI



22600 WHI



22602 WHI



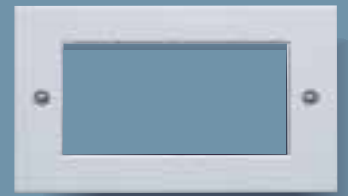
22603 WHI



22181 WHI



22182 WHI



22184 WHI

22591 WHI

1 GANG TWO MODULE
FRONTPLATE EURO TYPE
FITTED WITH 1 RJ45 KEYSTONE JACK
AND 2 X 12.5 X 50MM BLANKS

22592 WHI

1 GANG TWO MODULE
FRONTPLATE EURO TYPE
FITTED WITH 2 RJ45 KEYSTONE JACKS

22593 WHI

1 GANG TWO MODULE
FRONTPLATE EURO TYPE
FITTED WITH 1 RJ45 SLIMLINE OUTLET
AND 2 X 12.5 X 50MM BLANKS

22594 WHI

1 GANG TWO MODULE
FRONTPLATE EURO TYPE
FITTED WITH 2 RJ45 SLIMLINE OUTLETS

5

22596 WHI

1 GANG TWO MODULE
LOGIC PLUS FRONTPLATE EURO TYPE
FITTED WITH 1 RJ45 KEYSTONE JACK
AND 2 X 12.5 X 50MM BLANKS

22597 WHI

1 GANG TWO MODULE
LOGIC PLUS FRONTPLATE EURO TYPE
FITTED WITH 2 RJ45 KEYSTONE JACKS

22598 WHI

1 GANG TWO MODULE
LOGIC PLUS FRONTPLATE EURO TYPE
FITTED WITH 1 RJ45 SLIMLINE OUTLET
AND 2 X 12.5 X 50MM BLANKS

22599 WHI

1 GANG TWO MODULE
LOGIC PLUS FRONTPLATE EURO TYPE
FITTED WITH 2 RJ45 SLIMLINE OUTLETS

5

22600 WHI

2 GANG FOUR MODULE
LOGIC PLUS FRONTPLATE EURO TYPE
FITTED WITH 4 RJ45 SLIMLINE OUTLETS

22601 WHI

2 GANG FOUR MODULE
LOGIC PLUS FRONTPLATE EURO TYPE
FITTED WITH 4 RJ45 KEYSTONE JACKS

22602 WHI

2 GANG FOUR MODULE
FRONTPLATE EURO TYPE
FITTED WITH 4 RJ45 SLIMLINE OUTLETS

22603 WHI

2 GANG FOUR MODULE
FRONTPLATE EURO TYPE
FITTED WITH 4 RJ45 KEYSTONE JACKS

5

22181 WHI

1 GANG TWO MODULE FRONTPLATE
EURO TYPE APERTURE 50 X 50MM
FITTED WITH 2 BLANKS
(12.5 X 50MM)

22182 WHI

1 GANG TWO MODULE FRONTPLATE
EURO TYPE APERTURE 50 X 50MM

22184 WHI

2 GANG FOUR MODULE FRONTPLATE
EURO TYPE APERTURE 100 X 50MM

22186 WHI

EURO TYPE BLANK
(12.5 X 50MM)

10

10

5

10

MOUNTING BOXES:

Minimum box depth:
Keystone type: 35mm
Slimline type: 25mm

Fitted with shuttered adaptor plate
and label window

Fitted RJ45 modules are either 22545 Slimline
or 22645 Keystone

TIA/EIA TSB40A: Cat5e
TIA/EIA 568-A: Cat5e
ISO/IEC 11801: Cat5e

MOUNTING BOXES:

Minimum box depth:
Keystone type: 35mm
Slimline type: 25mm

Fitted with shuttered adaptor plate
and label window

Fitted RJ45 modules are either 22545 Slimline
or 22645 Keystone

TIA/EIA TSB40A: Cat5e
TIA/EIA 568-A: Cat5e
ISO/IEC 11801: Cat5e

MOUNTING BOXES:

Minimum box depth:
Keystone type: 35mm
Slimline type: 25mm

Fitted with shuttered adaptor plate
and label window

Fitted RJ45 modules are either 22545 Slimline
or 22645 Keystone

TIA/EIA TSB40A: Cat5e
TIA/EIA 568-A: Cat5e
ISO/IEC 11801: Cat5e

DIMENSIONS:
1 gang: 86 x 86mm
2 gang: 86 x 146mm
Blank: 12.5 x 50mm

FIXING CENTRES:

1 gang: 60.3mm
2 gang: 120.6mm

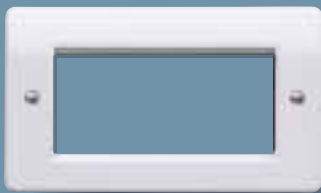
BS 5733: 1995 where applicable

MOUNTING BOXES

TRAINING, TOOLS, AND SPARES



K182 WHI



K184 WHI



22615 WHI



22616 WHI



K2181 WHI



K2183 WHI



22630



22631



22634

K182 WHI

1 GANG LOGIC PLUS
TWO MODULE FRONTPLATE
EURO TYPE APERTURE
50 X 50MM

10

22615 WHI

1 GANG SURFACE
DATA MOUNTING BOX
34MM DEEP

10

K2181 WHI

1 GANG
LOGIC PLUS DATA MOUNTING BOX
32MM DEEP

10

22630

PUNCH DOWN TOOL

1

K184 WHI

2 GANG LOGIC PLUS
FOUR MODULE FRONTPLATE
EURO TYPE APERTURE
100 X 50MM

5

22616 WHI

2 GANG SURFACE
DATA MOUNTING BOX
34MM DEEP

5

K2183 WHI

2 GANG
LOGIC PLUS DATA MOUNTING BOX
32MM DEEP

5

22631

CRIMP TOOL

1

22632

CABLE STRIPPER

1

22634

PAIRS TESTER

1

22636

SPARE WINDOWS
FOR OUTLETS PACK OF 10

10

DWKS01

DATAWORKS ONE DAY TRAINING COURSE

DWKS02

HALF DAY DATAWORKS CONVERSION COURSE

DIMENSIONS:

1 gang: 86 x 86mm
2 gang: 86 x 146mm

FIXING CENTRES:

1 gang: 60.3mm
2 gang: 120.6mm

BS 5733: 1995 where applicable

Special knockouts for standard sized trunking
in horizontal and vertical plane, surface and
buried conduits: 20mm

DIMENSIONS:

1 gang: 86 x 86 x 36mm (external)
2 gang: 86 x 146 x 36mm (external)

DIMENSIONS:

1 gang: 87 x 87mm
2 gang: 87 x 148mm

FIXING CENTRES:

1 gang: 60.3mm
2 gang: 120.6mm

BS.4662: 1970 where applicable

DATACOMS

19" WALL MOUNTED CABINETS



22506

22506
6U 19" CABINET

22509
9U 19" CABINET

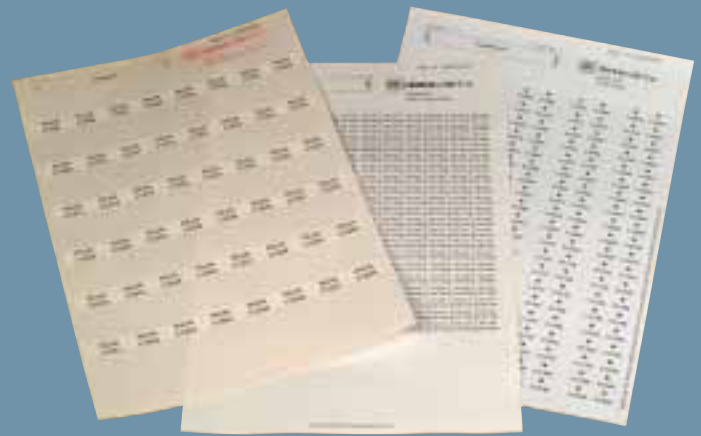
22512
12U 19" CABINET

22515
15U 19" CABINET

DIMENSIONS:

22506:	600 x 335 x 450mm
22509:	600 x 470 x 450mm
22512:	600 x 605 x 450mm
22515:	600 x 740 x 450mm

LABELLING SYSTEM



22650
LABELLING SOFTWARE
PROFESSIONAL VERSION

22655 WHI
START-UP PACK
LABELS AND FREWARE
SOFTWARE

22656 WHI
MODULE OUTLET LABELS
10 SHEETS

22657 WHI
CABLE WRAP
5 SHEETS

22658 WHI
PATCH PANEL LABELS
5 SHEETS

22638
OUTLET LABELS
(WHITE A4 BLANK SHEET OF 200)
(NOT COMPATIBLE WITH DATAWORKS LABELLING
SYSTEM)

22639
BOOK OF PERFORATED
NUMBERED LABELS
ON WHITE A4 SHEETS WITH RANGES
1-20, 1-25, 1-50, 1-100, 1-200.
5 SHEETS OF EACH
(NOT COMPATIBLE WITH DATAWORKS LABELLING
SYSTEM)

Coloured blank label sheets are also available.

The MK Dataworks Labelling System provides a quick, simple and cost-effective method of labelling the components of a structured cabling. The labels are pre-sized to complement and match the Dataworks data outlets, patch panels and UTP cable. The software (available in Freeware and Professional versions) allows the user to design, format and print labels on to the MK Dataworks blank labels.

To request your free copy of the Labelling System Freeware Software, please call 0870 240 3385 and quote reference "Dataworks Freeware".