

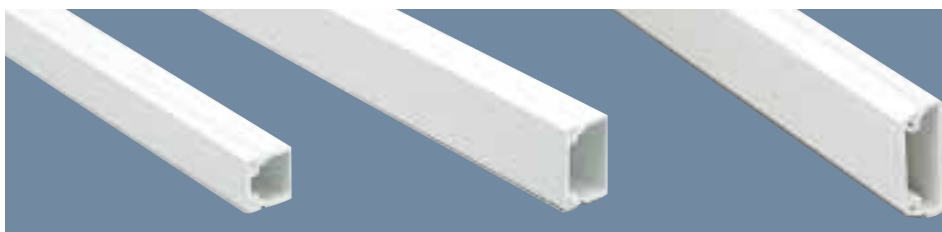
Ega Mini Trunking consists of a range of sizes of extruded PVC-U sections for the containment of electrical cable for surface wiring

The products are ideally suited for refurbishment programmes as well as new installation projects both in the domestic and commercial sectors. Speedfix Mini Trunking is complete with an acrylic foam adhesive for fast location of power circuits and secure containment of low voltage wiring

CONDUIT AND MINI

MINI TRUNKING

3 METRE LENGTHS

2 METRE LENGTHS
(FOR NON UK MARKETS)

| | | | | | | |
|-------------|----------|-----|----------|-----------|---------|-----|
| 16 x 16mm | YT/1 | 90m | | YT/1 D1 | 60m | |
| 25 x 16mm | YT/2 WHI | 90m | YT/2 CHA | 30m | YT/2 D1 | 60m |
| 32 x 12.5mm | YT/200 | 30m | | YT/200 D1 | 32m | |
| 40 x 16mm | YT/3 | 45m | | YT/3 D1 | 32m | |
| 40 x 25mm | YT/4 WHI | 45m | YT/4 CHA | 30m | YT/4 D1 | 32m |
| 40 x 40mm | YT/5 | 45m | | YT/5 D1 | 32m | |
| 50 x 25mm | YT/6 | 30m | | YT/6 D1 | 32m | |
| 50 x 32mm | YT/7 | 30m | | YT/7 D1 | 32m | |
| 50 x 50mm | YT/8 | 12m | | | | |

SPEEDFIX MINI TRUNKING

3 METRE LENGTHS

2 METRE LENGTHS

TWIN COMPARTMENT TRUNKING

3 METRE LENGTHS



Manufactured in accordance with BS. 4678 Part 4.

STANDARD LENGTH: 3 metres

Available in 2 metre lengths for NON UK Markets.

MATERIAL: PVC-U

Self Adhesive Tape should not be relied upon for permanent fixing when used in conjunction with the Speedfix range.

COLOUR: White

YT/2 and YT/4 Mini Trunking and Fittings are available in a choice of two colours, white or charcoal. When ordering add the appropriate colour suffix WHI or CHA.

CLEAR Mini Trunking is also available for those list numbers marked in blue.

Use colour suffix CLR eg. YT/1 CLR

| | | | | | | |
|-------------|-------|-----|----------|-----|------|-----|
| 16 x 16mm | SPF/1 | 60m | SPF/1 D1 | 60m | | |
| 25 x 16mm | SPF/2 | 30m | SPF/2 D1 | 60m | | |
| 32 x 12.5mm | | | | | | |
| 40 x 16mm | SPF/3 | 30m | SPF/3 D1 | 32m | ZT/3 | 30m |
| 40 x 25mm | SPF/4 | 30m | SPF/4 D1 | 32m | ZT/4 | 30m |
| 40 x 40mm | | | | | | |
| 50 x 25mm | | | | | | |
| 50 x 32mm | | | | | | |
| 50 x 50mm | | | | | | |



TECHNICAL HOTLINE +44 (0)1268 563720

CONDUIT AND MINI

| | | | | | |
|-----------------|----------------|------------------------|-----------------------------|------------------------|-----------------------------|
| COUPLING | END CAP | INTERNAL CORNER | INTERNAL DATA CORNER | EXTERNAL CORNER | EXTERNAL DATA CORNER |
|-----------------|----------------|------------------------|-----------------------------|------------------------|-----------------------------|

MOULDED

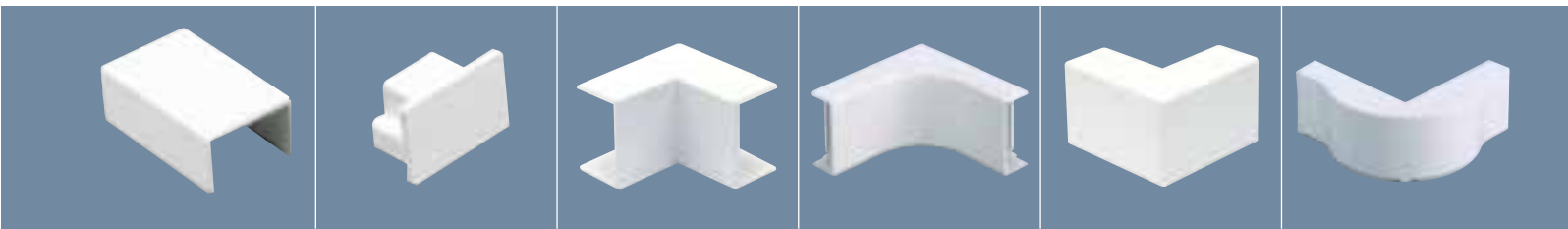
MOULDED

MOULDED

MOULDED

MOULDED

MOULDED



| | | | | | | | | | | | |
|-----------------|----|------------------|----|------------------|----|------------------|----|-------|---|--------|---|
| YC/1 | 20 | YEP/1 | 20 | YAI/1 | 20 | YAE/1 | 20 | | | | |
| YC/2 WHI or CHA | 20 | YEP/2 WHI or CHA | 20 | YAI/2 WHI or CHA | 20 | YAE/2 WHI or CHA | 20 | | | | |
| YC/200 | 20 | YEP/200 | 20 | YAI/200 | 20 | YAE/200 | 20 | | | | |
| YC/3 | 10 | YEP/3 | 20 | YAI/3 | 5 | YDAI/3 | 5 | YAE/3 | 5 | YDAE/3 | 5 |
| YC/4 WHI or CHA | 10 | YEP/4 WHI or CHA | 20 | YAI/4 WHI or CHA | 5 | YAE/4 WHI or CHA | 5 | | | | |
| YC/5 | 10 | YEP/5 | 20 | YAI/5 | 5 | YAE/5 | 5 | | | | |
| YC/8 | 10 | YEP/6 | 10 | YAI/6 | 5 | YAE/6 | 5 | | | | |
| | | YEP/7 | 10 | YAI/7** | 1 | YAE/7** | 1 | | | | |
| | | YEP/8 | 10 | YAI/8 | 1 | YAE/18 | 1 | | | | |

| | | | |
|-------------------|------------------------|-----------------|----------------------|
| FLAT ANGLE | FLAT DATA ANGLE | FLAT TEE | FLAT DATA TEE |
|-------------------|------------------------|-----------------|----------------------|

2 METRE LENGTHS

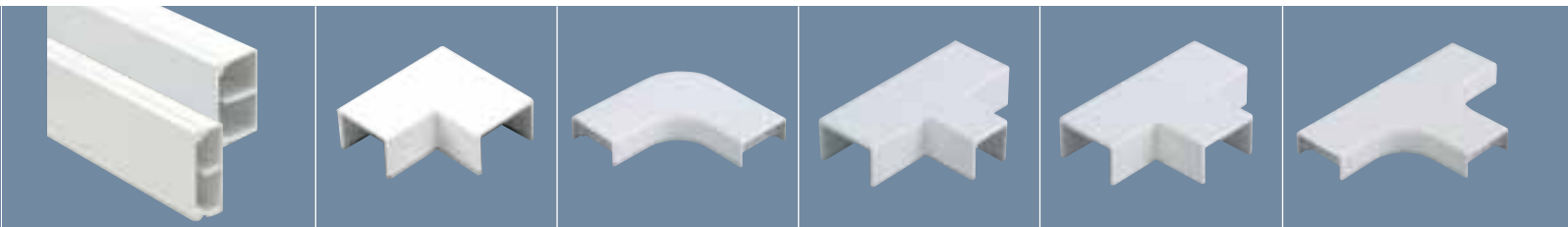
MOULDED

MOULDED

MOULDED

MOULDED

MOULDED

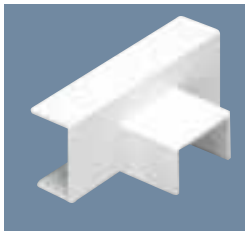


| | | | | | | | | | |
|------------------|-----|--------------------|----|--------------------|----|--|---|--------|---|
| YAF/1 | 20 | YTF/1 | 20 | | | | | | |
| YAF/2 WHI or CHA | 20 | YTF/2/1 YTF/2/2 | 20 | YTF/2/2 WHI or CHA | 20 | | | | |
| YAF/200 | 20 | YTF/200 | 20 | | | | | | |
| ZT/3 D1 | 32m | YAF/3 | 5 | YDAF/3 | 5 | YTF/3 | 5 | YDTF/3 | 5 |
| ZT/4 D1 | 32m | YAF/4 WHI or CHA | 5 | YTF/4 WHI or CHA | 5 | YTF/4/2 WHI or CHA | 5 | | |
| | | YAF/5 | 5 | YTF/5 | 5 | | | | |
| | | YAF/6 | 5 | YTF/6 | 5 | Flat Tee aperture sizes YTF/2/1 16 x 16mm YTF/2/2 25 x 16mm YTF/4/2 25 x 16mm | | | |
| | | YAF/7 (fabricated) | 1 | YTF/7 (fabricated) | 1 | | | | |
| | | YAF/8 | 1 | YTF/8 | 1 | | | | |

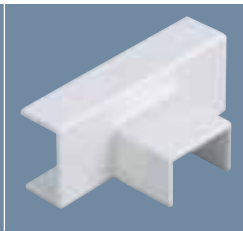
CONDUIT AND MINI

SIDE TEE

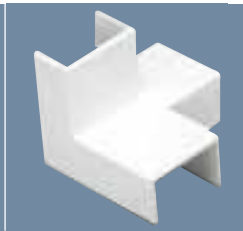
MOULDED



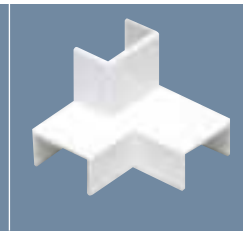
MOULDED

INTERSECTION
3 WAY
LEFT HAND

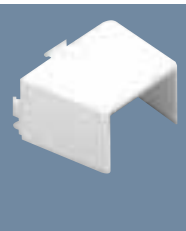
MOULDED

INTERSECTION
3 WAY
RIGHT HAND

MOULDED



ADAPTORS

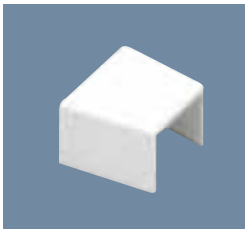
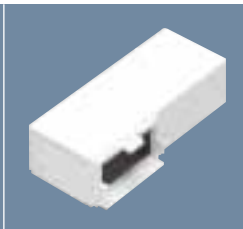
FOR USE WITH
MINI TRUNKING
BOXES
MOULDED

| | | | | | | | | | | |
|-------------|---------|----|---------|----|---------|----|---------|-------|------------------|----|
| 16 x 16mm | | | | | | | | YEA/1 | 25 | |
| 25 x 16mm | YST/2/1 | 10 | YST/2/2 | 10 | YAL/2 | 10 | YAR/2 | 10 | YEA/2 WHI or CHA | 25 |
| 32 x 12.5mm | YST/200 | 10 | | | YAL/200 | 10 | YAR/200 | 10 | YEA/200 | 25 |
| 40 x 16mm | | | | | | | | | YEA/3 | 25 |

Side Tees Aperture Sizes
YST/2/1: 16 x 16mm
YST/2/2: 25 x 16mm

ADAPTORS

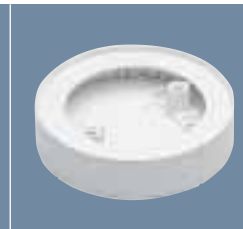
MOULDED

ADAPTORS
SIDE
MOUNTINGFOR USE WITH
MINI TRUNKING
BOXES
MOULDEDADAPTORS
YT/1 SQUARE
TO 20MM
ROUND

MOULDED

CIRCULAR
BOXES

MOULDED



MOULDED



| | | | | | | | | | | |
|-------------|-------|----|---------|----|--------|----|--------------|----|--------------|----|
| 16 x 16mm | UEA/1 | 25 | YSA/1 | 10 | YTO/12 | 10 | YCR/1/EL | 10 | | |
| 25 x 16mm | UEA/2 | 25 | YSA/2 | 10 | | | YCR/1/EL | 10 | | |
| 32 x 12.5mm | | | YSA/200 | 10 | | | YCR/200/1/EL | 10 | YCR/200/2/EL | 10 |
| 40 x 16mm | UEA/3 | 25 | YSA/3 | 5 | | | YCR/1/EL | 10 | | |

UEA Adaptors
are for fixing with adhesive.
They are particularly useful
when spurring off from a
larger trunking section.

YSA Adaptors
are for use with Ega Mini
Trunking Boxes (page 89)
and incorporate removable
end caps for right and left
hand mounting.

Circular Boxes accept standard ceiling roses,
pull switches and plug-in lighting fittings.
The base incorporates an earth terminal facility
(order terminal separately).

LID FIXING CENTRES: 50.8mm
PILLAR THREAD SIZE: M4 (Metal inserts)
LOAD SUSPENSION: 5kg @ 60° C max.

YCR/200/1/EL is a One Way box
YCR/200/2/EL is a Through box



TECHNICAL HOTLINE +44 (0)1268 563720

CONDUIT AND MINI

ROUND CORNER ACCESSORY BOXES

SQUARE CORNER ACCESSORY BOXES

EGALINE CIRCULAR FIXTURE BOX

EGALINE WALL BOX ASSEMBLIES

SURFACE

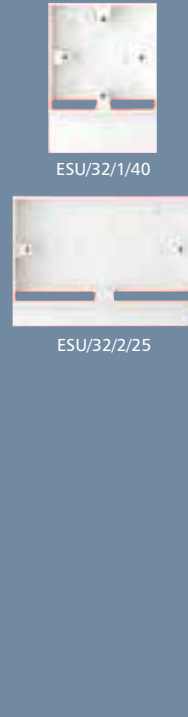
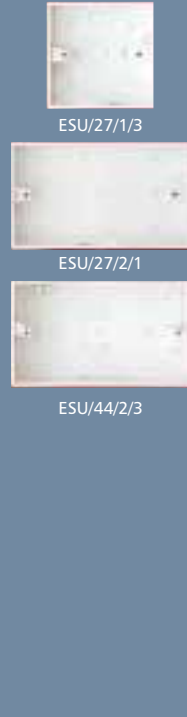
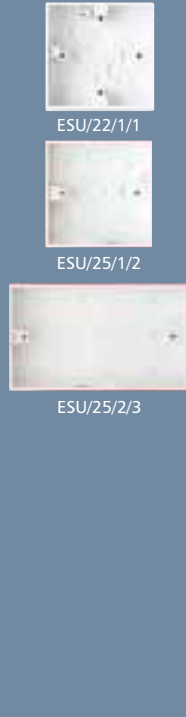
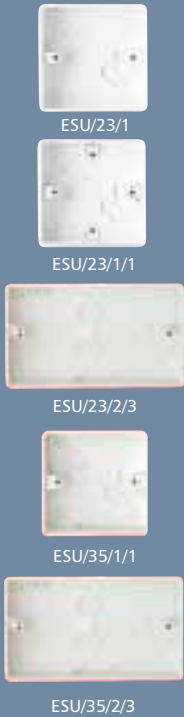
SURFACE

SURFACE

SIDE MOUNTING SURFACE

FOR AMERICAN ACCESSORIES

FOR AMERICAN ACCESSORIES



ESU/23/1 **25**
1 GANG 25MM
ONE ENTRY
CENTRE (TOP)

ESU/23/1/1 **25**
1 GANG 25MM
ONE ENTRY (SIDE)

ESU/23/2/3 **10**
2 GANG 25MM
THREE ENTRIES
(TOP & BOTH SIDES)

ESU/35/1/1 **25**
1 GANG 32MM
ONE ENTRY
CENTRE (TOP)

ESU/35/2/3 **10**
2 GANG 32MM
THREE ENTRIES.
(TOP, BOTTOM & SIDE)

ESU/22/1/1 **25**
1 GANG 25MM
ONE ENTRY (SIDE)

ESU/25/1/2 **25**
1 GANG 25MM
TWO ENTRIES
(TOP & BOTTOM)

ESU/22/2/3 **10**
2 GANG 25MM
THREE ENTRIES
(TOP & BOTH SIDES)

ESU/25/2/3 **10**
2 GANG 25MM
THREE ENTRIES
(TOP & BOTTOM)

ESU/27/1/3 **10**
1 GANG 32MM
THREE ENTRIES
(TOP & BOTTOM)

ESU/27/2/1 **10**
2 GANG 32MM
ONE ENTRY
CENTRE (TOP)

ESU/44/2/3 **5**
2 GANG 41MM
THREE ENTRIES
(TOP & BOTH SIDES)

Ega Round and Square
Corner boxes are for use in
conjunction with mini
trunking adaptors,
reference:
YEA/- straight entry and
YSA/- side entry.
MATERIAL: PVC-U
DIMENSIONS:
1 gang: 86 x 86mm
2 gang: 86 x 146mm
FIXING CENTRES:
1 gang: 60.3mm
2 gang: 120.6mm
BS.4662 and BS.1363
where applicable.

ESU/32/1/25 **10**
1 GANG TO FIT 25 x 16mm
TRUNKING.TWO ENTRIES

ESU/32/1/40 **10**
1 GANG TO FIT 40 x 16mm
TRUNKING.TWO ENTRIES

ESU/32/2/25 **10**
2 GANG TO FIT 25 x 16mm
TRUNKING.TWO ENTRIES

ESU/32/2/40 **10**
2 GANG TO FIT 40 x 16mm
TRUNKING. TWO ENTRIES

Side mounting boxes do not
require adaptors and can be
used with 25mm x 16mm
and 40 x 16mm mini
trunking
MATERIAL: PVC-U
DIMENSIONS:
1 gang: 86* x 86mm
2 gang: 86* x 146mm
*excluding plinth
FIXING CENTRES:
1 gang: 60.3mm
2 gang: 120.6mm
BS.4662 and BS.1363
where applicable.

YCR USB 50 WHI **10**
CIRCULAR FIXTURE BOX
BASE, LID AND COVER
WHITE
FOUR ENTRIES
(NON UK)

Egaline circular fixture box is
for use in conjunction with
Mini Trunking Spout
adaptors reference:
YEA/-straight entry and
YSA/-side entry
MATERIAL: PVC-U
DIMENSIONS:
140 x 28mm

ESU USB 17 WHI **5**
1 GANG
38MM DEPTH
FOUR ENTRIES (NON UK)

ESU USB 19 WHI **5**
1 GANG
45MM DEPTH
FOUR ENTRIES (NON UK)

ESU USB 22 WHI **5**
1 GANG
51MM DEPTH
FOUR ENTRIES (NON UK)

ESU USB 53 WHI **5**
2 GANG
DEEP BOX
FOUR ENTRIES (NON UK)

Egaline Wall Box assemblies
are for use in conjunction
with Mini Trunking Spout
adaptors reference:
YEA/-straight entry and
YSA/-side entry
MATERIAL: PVC-U
DIMENSIONS:
1 gang: 124 x 79mm