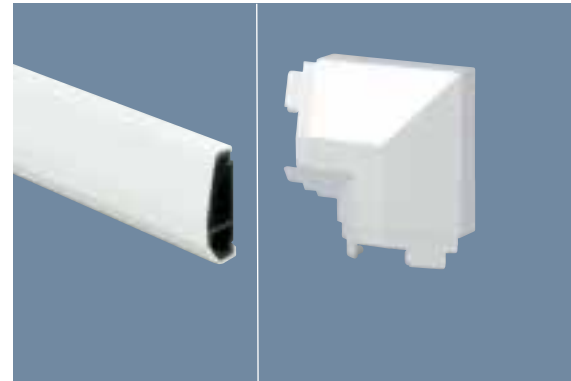
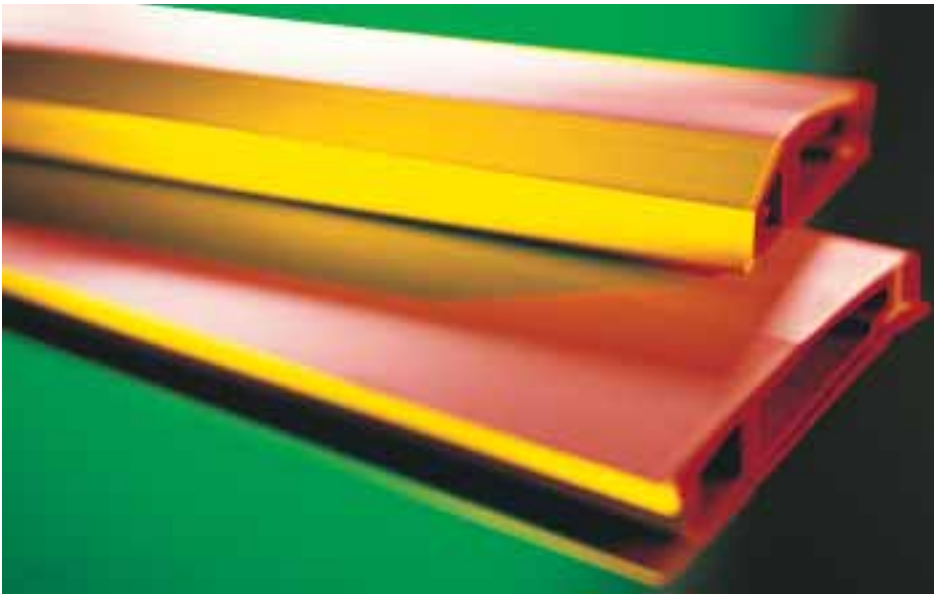


SKIRTING AND DADO

ARCHITRAVE TRUNKING

58 X 20MM
3 METRE
LENGTHS

FLAT ANGLE



AAT/1 15m AFP/1 10

The Lincoln skirting and architrave system consists of two compatible extruded sections, both of which are twin compartment, and a range of moulded fittings and accessory box.

The system is for use in domestic or light commercial premises and hotels and is designed to provide continuity of cable space around the perimeter of an area including doorways.

STANDARD LENGTH: 3 metres
MATERIAL: PVC-U
COLOUR: White

SKIRTING TRUNKING

85 x 20MM
3 METRE
LENGTHS

INTERNAL CORNER

EXTERNAL CORNER

ACCESSORY MOUNTING BOX

1 GANG



KST/1 15m KIP/1 10 KXP/1 10 KS/1/1 10

FLAT TEES

**ADAPTOR
SKIRTING TO
ARCHITRAVE**

**SIDE SWITCH
MOUNTING
BOX**

**MINI
TRUNKING
ADAPTOR**

LEFT HAND

RIGHT HAND

LEFT HAND

RIGHT HAND

1 GANG

FOR USE WITH
YEA ADAPTOR



AFT/1/L

10

AFT/1/R

10

ASU/1/L

10

ASU/1/R

10

AS/1

10

AEA/1

10

**ACCESSORY
MOUNTING
BOX**

END CAP

**EXTERNAL
CORNER**

JOINT PLATE

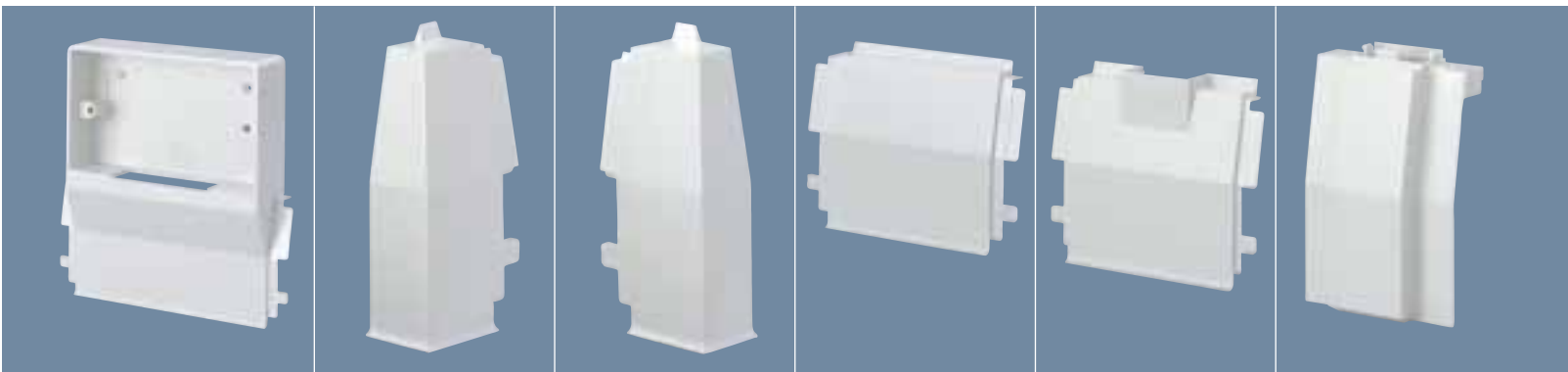
**MINI
TRUNKING
ADAPTOR**

**CROSSOVER
UNIT**

2 GANG

LEFT HAND

FOR USE WITH
YEA ADAPTOR



KS/1/2

5

KEP/1/L

10

KEP/1/R

10

KCP/1

10

KEA/1

10

KCU/1

10