



A range of three profiles in white and charcoal PVC-U for skirting and dado applications

Each profile is available with or without an integral busbar and there is a comprehensive selection of flush fitting accessories for power, data and telecom requirements

SKIRTING AND DADO



Pre-wired cable assembly
For electrical connection of busbar around corners

White or Charcoal
A range of three profiles in white or charcoal PVC-U for skirting and dado applications

External corner
Supplied with corner busbar shield and outer clip-on cover

Accessory spacer
For mounting accessories as pairs or any number of in-line multiples

Internal corner
Supplied with carrier, busbar shield and outer clip-on covers

Choice of delivery
With Powerlink Plus the choice is yours - hard wiring or an integral 63 amp busbar with power accessories that simply plug into place.





Coupler

Joins trunking lengths together and to pre-assembled angles.

End cap

Neatly finishes runs of trunking. Supplied with screw fix carrier/busbar shield and clip on cover.

Flush fitting accessories

Powerlink Plus offers a wide selection of flush fitting accessories, including switchsockets, DP switches, connection units and virtually every type of computer and telecom connector. All power accessories are available as plug-on units or with wire in terminals. If that is not enough, an optional mounting kit will accept virtually any accessory within the entire MK range.

EMC screening

Aluminium screen inserts provide effective screen for computer services cables



SKIRTING AND DADO

COMPONENT SELECTOR CHART

Standard length: 3 metres
 Supplied with covers
 Trunking size: 170mm (Height) x 50mm (Depth)
 With extension fitted:
 212mm (Height) x 50mm (Depth)
 Material PVC-U
 Colour: White and Charcoal

TRUNKING

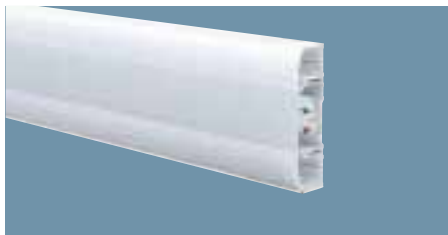
WITH AND
 WITHOUT
 63 AMP
 BUSBARS

COUPLER

WITH BUSBAR
 SHIELD

END CAPS

SUPPLIED
 AS A PAIR



**DADO
 TRUNKING
 WITH
 BUSBARS**

K1963 WHI
 K1963 CHA

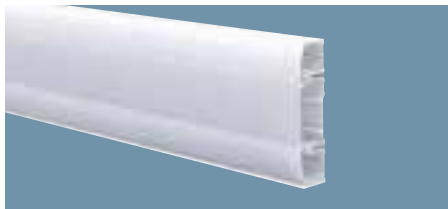
3m
 3m

K1908 WHI
 K1908 CHA

5
 5

K1904 WHI
 K1904 CHA

1
 1



**DADO
 TRUNKING
 WITHOUT
 BUSBARS**

K1903 WHI
 K1903 CHA

3m
 3m

K1908 WHI
 K1908 CHA

5
 5

K1904 WHI
 K1904 CHA

1
 1



**SKIRTING
 AND DADO
 TRUNKING
 WITH
 BUSBARS**

K1962 WHI
 K1962 CHA

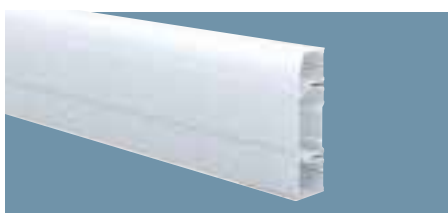
3m
 3m

K1945 WHI
 K1945 CHA

5
 5

K1944 WHI
 K1944 CHA

1
 1



**SKIRTING
 AND DADO
 TRUNKING
 WITHOUT
 BUSBARS**

K1902 WHI
 K1902 CHA

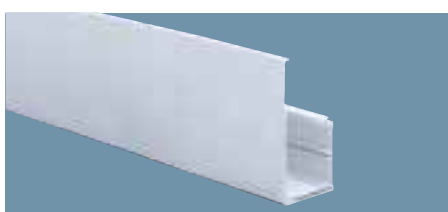
3m
 3m

K1945 WHI
 K1945 CHA

5
 5

K1944 WHI
 K1944 CHA

1
 1



**EXTENSION
 FOR
 SKIRTING
 & DADO
 TRUNKING**

K1913 WHI
 K1913 CHA

6m
 6m

K1918 WHI
 K1918 CHA

5
 5

K1914 WHI
 K1914 CHA

1
 1



TECHNICAL HOTLINE +44 (0)1268 563720

SKIRTING AND DADO

INTERNAL CORNER

WITH BUSBAR SHIELD



K1905 WHI **1**
K1905 CHA **1**

EXTERNAL CORNER

WITH BUSBAR SHIELD



K1906 WHI **1**
K1906 CHA **1**

INTERNAL SPECIAL CORNER

Allows continuous installation around corners other than 90°. To order, quote List No. and Angle eg. K1966 WHI 150°.



K1965 WHI **1**
K1965 CHA **1**

Requires 2 x K1908 couplers to join to trunking

EXTERNAL SPECIAL CORNER

Allows continuous installation around corners other than 90°. To order, quote List No. and Angle eg. K1966 WHI 150°.



K1966 WHI **1**
K1966 CHA **1**

Requires 2 x K1908 couplers to join to trunking

INTERNAL 135° CORNER



K1965 WHI 135 **1**
K1965 CHA 135 **1**

Requires 2 x K1908 couplers to join to trunking

EXTERNAL 135° CORNER



K1966 WHI 135 **1**
K1966 CHA 135 **1**

Requires 2 x K1908 couplers to join to trunking

K1905 WHI **1**
K1905 CHA **1**

K1906 WHI **1**
K1906 CHA **1**

K1965 WHI **1**
K1965 CHA **1**

Requires 2 x K1908 couplers to join to trunking

K1966 WHI **1**
K1966 CHA **1**

Requires 2 x K1908 couplers to join to trunking

K1965 WHI 135 **1**
K1965 CHA 135 **1**

Requires 2 x K1908 couplers to join to trunking

K1966 WHI 135 **1**
K1966 CHA 135 **1**

Requires 2 x K1908 couplers to join to trunking

K1911 WHI **1**
K1911 CHA **1**

K1912 WHI **1**
K1912 CHA **1**

K1961 WHI **1**
K1961 CHA **1**

Requires 2 x K1945 couplers to join to trunking

K1964 WHI **1**
K1964 CHA **1**

Requires 2 x K1945 couplers to join to trunking

K1961 WHI 135 **1**
K1961 CHA 135 **1**

Requires 2 x K1945 couplers to join to trunking

K1964 WHI 135 **1**
K1964 CHA 135 **1**

Requires 2 x K1945 couplers to join to trunking

K1911 WHI **1**
K1911 CHA **1**

K1912 WHI **1**
K1912 CHA **1**

K1961 WHI **1**
K1961 CHA **1**

Requires 2 x K1945 couplers to join to trunking

K1964 WHI **1**
K1964 CHA **1**

Requires 2 x K1945 couplers to join to trunking

K1961 WHI 135 **1**
K1961 CHA 135 **1**

Requires 2 x K1945 couplers to join to trunking

K1964 WHI 135 **1**
K1964 CHA 135 **1**

Requires 2 x K1945 couplers to join to trunking

K1915 WHI **1**
K1915 CHA **1**

K1916 WHI **1**
K1916 CHA **1**

K1967 WHI **1**
K1967 CHA **1**

Requires 2 x K1918 couplers to join to trunking

K1968 WHI **1**
K1968 CHA **1**

Requires 2 x K1918 couplers to join to trunking

K1967 WHI 135 **1**
K1967 CHA 135 **1**

Requires 2 x K1918 couplers to join to trunking

K1968 WHI 135 **1**
K1968 CHA 135 **1**

Requires 2 x K1918 couplers to join to trunking

SKIRTING AND DADO

FLAT ANGLE

FLAT TEE

FLAT CROSS

CABLE
RETAINERS



VTS/11



VTS/12



DADO TRUNKING WITH BUSBARS

K1992 WHI
K1992 CHA
UP/DOWN

1
1

K1972 WHI
K1972 CHA
DOWN

1
1

K1974 WHI
K1974 CHA

1
1

K1973 WHI
K1973 CHA
UP

1
1



DADO TRUNKING WITHOUT BUSBARS

K1992 WHI
K1992 CHA
UP/DOWN

1
1

K1972 WHI
K1972 CHA
DOWN

1
1

K1974 WHI
K1974 CHA

1
1

K1973 WHI
K1973 CHA
UP

1
1



SKIRTING AND DADO TRUNKING WITH BUSBARS

K1957 WHI
K1957 CHA
UP

1
1

K1958 WHI
K1958 CHA
DOWN

1
1



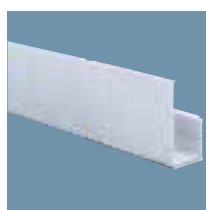
SKIRTING AND DADO TRUNKING WITHOUT BUSBARS

K1957 WHI
K1957 CHA
UP

1
1

K1958 WHI
K1958 CHA
DOWN

1
1



EXTENSION FOR SKIRTING & DADO TRUNKING

K1994 WHI
K1994 CHA
UP

1
1

K1993 WHI
K1993 CHA
DOWN

1
1

VTS/11
CABLE RETAINERS FOR USE WITH EXTENSION TRUNKING

10

VTS/12
CABLE RETAINERS FOR USE IN OUTER COMPARTMENTS

10



TECHNICAL HOTLINE +44 (0)1268 563720

SKIRTING AND DADO

CABLE ENTRY SECTION

CABLE ENTRY BOX

MCB/RCD HOUSING

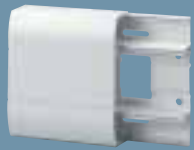
MINI TRUNKING ADAPTORS

CONDUIT ADAPTORS

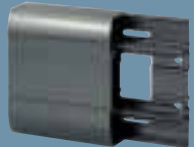
COVERS AND CABLE DIVIDER

FLUSH

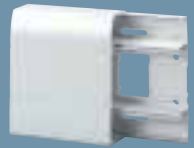
3 METRE LENGTHS



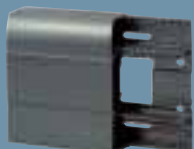
K1920 WHI



K1920 CHA



K1929 WHI



K1929 CHA



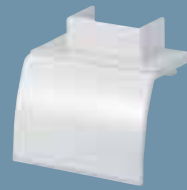
1922 ALM



K1949 WHI



K1949 CHA



K1926 WHI



K1927 WHI



K1901 WHI



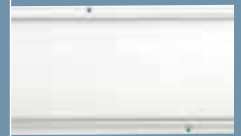
K1907 WHI



K1932 WHI



K1935 WHI



1934 WHI



K1936 WHI

K1920 WHI **1**
K1920 CHA **1**
 REAR CABLE ENTRY SECTION DADO TRUNKING

K1929 WHI **1**
K1929 CHA **1**
 REAR CABLE ENTRY SECTION SKIRTING AND DADO TRUNKING

Pre-drilled with knockouts in upper and lower compartments and single large aperture in the central compartment.

Supplied complete with covers, central cover fixing screws, and general fixing screw bushes.

TRUNKING SIZE:
 152 (Length) x 170 (Height) x 50mm (Depth)

1922 ALM **5**
 CABLE ENTRY BOX FOR USE WITH K1920 AND K1929

Included in the pack is a template for positioning on site prior to the trunking being available.

DIMENSIONS:
 133 x 133 x 40mm

KNOCKOUTS:
 4 x 20mm
 4 x 25mm

K1949 WHI **1**
K1949 CHA **1**

Mounts directly to the centre compartment to accept up to 2 one module products from the MK Sentry range.

DIMENSIONS
 220mm (Length) x 100mm (Depth) when mounted on trunking.

K1926 WHI **10**
 YT4 MINI TRUNKING ADAPTOR

K1927 WHI **10**
K1927 CHA **10**
 MINI TRUNKING ADAPTOR FOR USE WITH YEA ADAPTORS FOR YT1, YT2 AND YT3 TRUNKING

Accepts MK Ega Mini Trunking adaptors.

K1901 WHI **10**
 20MM CONDUIT ADAPTOR

K1907 WHI **10**
 25MM CONDUIT ADAPTOR

K1932 WHI **15m**
K1932 CHA **15m**
 OUTER COVER SQUARE SUPPLIED IN 3 METRE LENGTHS

K1935 WHI **15m**
K1935 CHA **15m**
 OUTER COVER CURVED SUPPLIED IN 3 METRE LENGTHS

1934 WHI **15m**
1934 CHA **15m**
 CENTRAL COVER STRAIGHT SUPPLIED IN 3 METRE LENGTHS

K1936 WHI **15m**
K1936 CHA **15m**
 EXTENSION COVER SUPPLIED IN 3 METRE LENGTHS

VTS/50 **30m**
 CABLE DIVIDER SUPPLIED IN 3 METRE LENGTHS

SKIRTING AND DADO

SOCKET OUTLETS

'PLUG-ON'
13 AMP
STANDARD



1956 WHI



1956 CHA

1956 WHI
1956 CHA
STANDARD
SOCKET OUTLET

SWITCHSOCKET
OUTLETS

'PLUG-ON'
13 AMP
STANDARD



1950 WHI



1950 CHA



1951 WHI



1951 CHA

1950 WHI
1950 CHA
STANDARD SWITCHSOCKET
WITH NEON

1951 WHI
1951 CHA
STANDARD SWITCHSOCKET



NON STANDARD



1953 WHI



1953 CHA

1953 WHI
1953 CHA
NON STANDARD
SWITCHSOCKET



'WIRE-IN'
13 AMP
STANDARD



1952 WHI



1952 CHA

1952 WHI
1952 CHA
STANDARD SWITCHSOCKET



NON STANDARD



1955 WHI



1955 CHA

1955 WHI
1955 CHA
NON STANDARD
SIDE WIRED SWITCHSOCKET



For plugging onto the busbars.
Supplied complete with one
accessory spacer and fixing screws.

For plugging onto the busbars.
Supplied complete with one
accessory spacer and fixing screws.

For plugging onto the busbars.
With a 'T' shape earth pin aperture
and for use only with the non
standard 13 amp Safetyplug, list
no. 647. Supplied complete with
one accessory spacer and fixing
screws.

Fitted with screw terminals for
independent wiring. Supplied
complete with one accessory spacer
and fixing screws.

Fitted with screw terminals for
independent wiring. With a 'T'
shape earth pin aperture and for
use only with the non standard
13 amp Safetyplug, list no. 647.
Supplied complete with one
accessory spacer and fixing
screws.



TECHNICAL HOTLINE +44 (0)1268 563720

SKIRTING AND DADO

CONNECTION UNITS

DP SWITCHED
'PLUG-ON'



1970 CHA



1971 WHI

DP SWITCHES

32 AMP
'PLUG-ON'



1943 WHI



1943 CHA

TWO WAY SWITCH

20 AMP SP



1942 WHI



1942 CHA

TELEPHONE SOCKET OUTLETS



1980 WHI



1980 CHA



1995 WHI



1995 CHA

ISOLATED CO-AXIAL SOCKET OUTLETS



1981 WHI



1981 CHA

1970 WHI
1970 CHA
WITH NEON AND
13 AMP FUSE
1971 WHI
1971 CHA
WITH NEON
FLEX OUTLET AND
13 AMP FUSE

5
5
5
5

1943 WHI
1943 CHA
WITH NEON

5
5

1942 WHI
1942 CHA

5
5

1980 WHI
1980 CHA
MASTER SOCKET

5
5

1981 WHI
1981 CHA

5
5

1995 WHI
1995 CHA
HANDSET POLARISED
SOCKET OUTLET

5
5

1999 WHI
1999 CHA
RJ11
TELEPHONE/DATA SOCKET

5
5

For feeding from the busbars and controlling remote equipment. Supplied complete with fixing screws.

For plugging onto the busbars. Can be used either as a busbar switch disconnector or for feeding and controlling remote equipment. The switch can accommodate up to 10mm² cables. Supplied complete with fixing screws.

Can be used for lighting and remote equipment. It is not connected to the busbars and requires separate cables. Supplied complete with fixing screws.

1980 Supplied complete with enclosure box together with fixing screws, connecting tool, cable tie and fixing screws for mounting on to the dado trunking. A full list of instructions with wiring diagrams is supplied in every pack. Approved for use with telecommunication systems run by BT in accordance with the conditions in the instructions for use.

1995 Supplied complete with enclosure box together with fixing screws, connecting tool, cable tie and fixing screws for mounting on to the dado trunking. Approved for use with telecommunication branch systems in accordance with the conditions in the instructions for use.

Isolated single co-axial outlet for direct connection to single TV or FM co-axial down lead. Supplied complete with enclosure box together with all the necessary fixing screws for mounting on to the dado trunking.

SKIRTING AND DADO

DATA OUTLETS

RJ45



1978 WHI



K1976 CHA



K1976 WHI



K1947 CHA

BNC



1985 WHI



1985 CHA

ELV
BLANK PLATES

1986 WHI



1986 CHA

DATA OUTLETS

FOR EXTENSION
TRUNKING
RJ45

K1941 WHI



K1941 CHA



K1977 WHI



K1977 CHA

BNC



K1989 WHI



K1989 CHA

1978 WHI
1978 CHA
RJ45 CATEGORY 5
COMPUTER/DATA SOCKET

5

5

K1976 WHI
K1976 CHA
RJ45/EURO OUTLET
TWO MODULE UNSERVICED

5

5

K1947 WHI
K1947 CHA
RJ45/LU6C OUTLET
TWO MODULE, UNSERVICED

5

5

1978 Data socket to
Category 5 1978

K1976 Euro 50x50mm
(accommodates 2 outlets)

K1947 Cut out dimensions LU6C
22x37mm for each outlet.

1985 WHI
1985 CHA
BNC TYPE

5

5

Supplied complete with enclosure
box together with all necessary
fixing screws for mounting on to
the trunking.

Crimped connections.
Impedance 50Ω

5

5

1986 WHI
1986 CHA
ELV BOX AND COVER

Can be punched for use with any
ELV accessory that can be mounted
over the busbars.

Supplied complete with enclosure
box together with fixing screws for
mounting on to the trunking.

5

5

K1941 WHI
K1941 CHA
RJ45/LU6C
TELEPHONE/DATA OUTLET
(UNSERVICED) TWO MODULE

5

5

K1977 WHI
K1977 CHA
RJ45/EURO
TELEPHONE/DATA OUTLET
(UNSERVICED) TWO MODULE

5

5

Plates for mounting clip in
RJ45/LU6C and RJ45/Euro data
modules

Accessory modules not supplied

Cut out dimensions:
K1941 22mm x 37mm for each
outlet.

K1977 50X50mm which
accommodates 2 outlets.

K1989 WHI
K1989 CHA
BNC TYPE

Crimped connections.
Impedance 50Ω

5

5

ELV BLANK PLATES

FOR EXTENSION TRUNKING

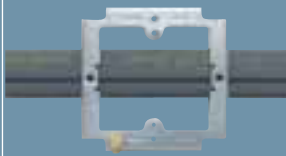


K1987 WHI

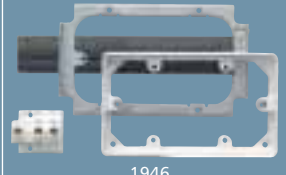


K1987 CHA

FLUSH ACCESSORY MOUNTING FRAMES



1928



1946



1998

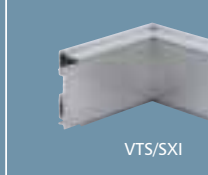


12024SLT9

EMC SCREENING INSERTS



VTS/SX



VTS/SXI



VTS/SXE



VTS/SO/1

TRUNKING ACCESSORIES AND PLUG IN CABLE TERMINATIONS (3 POLE)



K1925



1919



1937

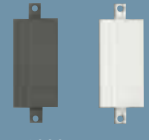


1923



1924

TRUNKING COMPONENTS AND SPARES



1909 CHA

1909 WHI



1930 CHA

1930 WHI



WARNING LIVE BUSBARS

1931



1933 WHI

K1987 WHI
K1987 CHA
ELV COVER

5
5

1928
1 GANG ACCESSORY MOUNTING KIT WITH BUSBAR SHIELD

1946
2 GANG ACCESSORY MOUNTING KIT WITH FRAME AND PATTESS

1998
1 GANG MOUNTING FRAME & BOX FOR ELV ACCESSORIES

12024SLT9
MOUNTING FRAME FOR 2 GANG ACCESSORY

1928 For fixing standard single gang accessories to the trunking. The accessories can be connected to the busbars by using one of the cable termination components or wired separately. Complete with fixing screws.

1946 For fixing Sentriesockets, Filtered sockets and two gang accessories to the trunking. Supplied with busbar terminations and cover, mounting frame and extension pattress together with fixing screws

1998 For fixing standard single gang extra low voltage outlets to the trunking. Supplied complete with enclosure box together with all the necessary fixing screws.

10

VTS/S
TRUNKING (LENGTH 3m)

VTS/SI
INTERNAL CORNER

VTS/SE
EXTERNAL CORNER

21016 SST9
SPARE BONDING LINKS

VTS/SO/1
OUTLET BOX ASSEMBLY

VTS/SX
EXTENSION TRUNKING 3 METRE LENGTH

VTS/SXI
INTERNAL CORNER FOR EXTENSION TRUNKING

VTS/SXE
EXTERNAL CORNER FOR EXTENSION TRUNKING

VTS/SXO/1
OUTLET BOX ASSEMBLY FOR EXTENSION TRUNKING

Screening Inserts can be used as a screen for computer services cables. Not for use with power cables. Lengths include earth lead and fixing screws.

VTS/S fits top and bottom data compartments only. Box not supplied

6m

1

1

25

1

6m

1

1

1

K1925
PLUG IN BUSBAR COUPLER

1919
CABLE LINK ASSEMBLY

1937
CABLE CROSSING BARRIER

1939
WALL STEP BARRIER

1923
10mm² CABLE TERMINATION

1924
25mm² CABLE TERMINATION

K1925 To connect lengths of individual busbars together. Rating 63 amps.

1919 Prewired corner cable link for internal and external corners. Rating 63 amps.

1937 Suitable for bridging the central compartment, where there are no busbars. (Busbars are coupled by cables passing underneath)

1939 To maintain segregation between the wall and the busbars or cables when installing Powerlink around a pillar of less than 125mm

1923 To connect the busbar to the mains supply or to electrical accessories mounted onto mounting frames. Rating: 50 amps.

1924 To connect the busbars to the mains supply and for connecting the busbars around corners (two required). Rating: 63 amps.

10

5

5

1

10

10

10

100

100

100

100

100

1909 WHI
1909 CHA
CENTRAL COVER COUPLER

1930 WHI
1930 CHA
ACCESSORY SPACER

1931
BUSBAR COVER for additional protection Supplied in 1m lengths.

1933 WHI
BUSBAR SECTION for dado trunking without busbars. Supplied in 3m lengths.

111/35/ZICMA
REAR CABLE ENTRY SECTION FIXING SCREWS

11750 PS
COVER SCREWS

11816 PS
ACCESSORY SCREWS

11817 PS
CABLE TERMINATION & BUSBAR COVER SCREWS

11827 PS
FIXING SCREW BUSHES

10

10

10

10

15m

3m

100

100

100

100

100

100

100

Can be punched to accommodate ELV outlets