

RAISED ACCESS FLOOR



Designed for maximum flexibility in power distribution for raised floor applications.

The MK Powerlink Track System is a low profile system catering for single and multi-circuit applications, suitable for standard, clean earth, uninterrupted or dedicated power supplies. Allowing power to be carried underfloor throughout the building, the unique in-built cost saving features enable Powerlink Track to be installed quickly and simply.

Combining MK Floor Boxes with the Powerlink Track System creates the fastest possible solution for the distribution of power, voice and data services under raised floors.

MK Grommet Boxes provide a range cost effective and simple means of accessing services beneath the floor, minimising the need for intermediate connections.

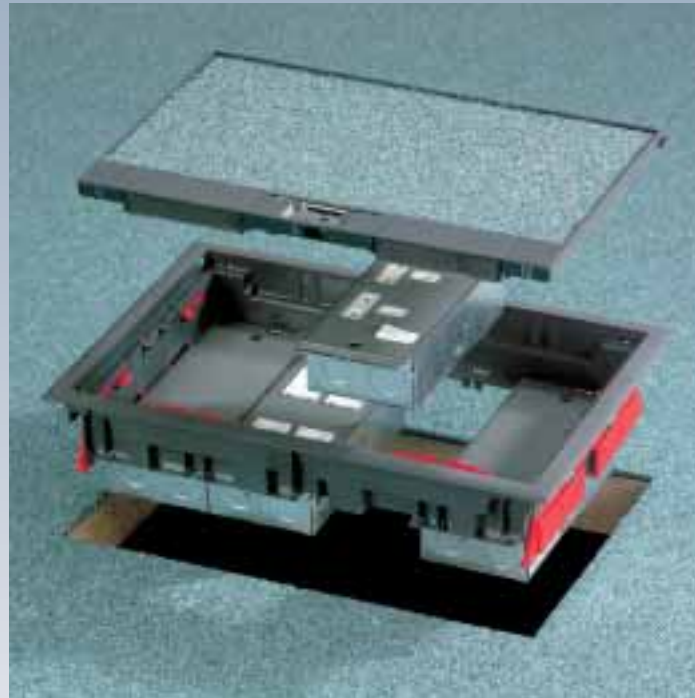
The MK Powerlink Track System is a low profile system catering for single and multi-circuit applications, suitable for standard, clean earth, uninterrupted or dedicated power supplies. Allowing power to be carried underfloor throughout the building, the unique in-built cost saving features enable Powerlink Track to be installed quickly and simply.

MK Cable Carrier wire tray range is an efficient answer to the underfloor routing of data cable. Available in seven standard profile widths from 70mm to 520mm, the zinc plated, silver passivated finish significantly increases corrosion protection for a longer life.

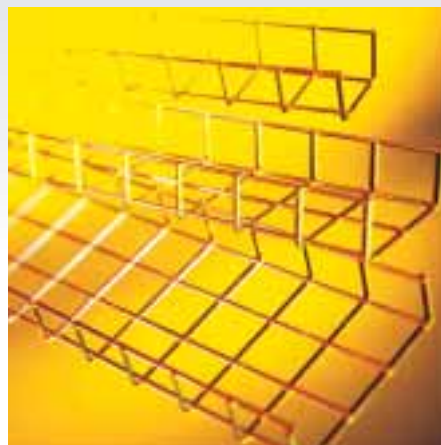
Combining MK Floor Boxes with the Powerlink Track System creates the fastest possible solution for the distribution of power, voice and data services under raised floors.

MK Grommet Boxes provide a range cost effective and simple means of accessing services beneath the floor, minimising the need for intermediate connections.

MK Dataworks provides a complete Cat5e data and voice communication solution. From patch panels, leads and cable, to connectors and outlet plates. Dataworks integrates seamlessly with MK power accessories



Floor Boxes for voice, data and power outlets



Cable Carrier in 7 standard trays widths



Grommet box for direct distribution to desks and workstations

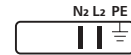


Dataworks Cat5e structured cabling system

RAISED ACCESS FLOOR

TRACK

3 POLE GREY



Low tack dust covers
protect unused outlets

Track snaps securely to
end feed units



POWERTRACK

Available in 1.2m, 2.4m and 3.6m lengths with integral, end caps, slab brackets and patented 'snap-fast' track to track and track to end feed connections – safe, speedy installation with minimal components, saves time on site and prevents order shortages.

New rigid construction ensures secure track connections.

Adjustable slab brackets with 3 height settings (17, 27 and 39mm) are available allowing track to be raised to clear other cables and services enables greater flexibility in track layout and installation.

Choose from 3 pole (2 and 3 bar) standard, 4 pole clean earth and 6 pole dual circuit systems Shuttered, colour coded and keyed sockets at 300mm centres with sliding dust covers ensures easy identification and only correct track and tap-off connection, eliminating health and safety risks and potential down time.

TAP-OFFS

Comprehensive range of tap-offs available in 3m or 5m lengths, fused and unfused with LSF cable as standard ensures compatibility with all relevant high integrity earthing requirements of BS7671:1992 Regulation 607.

Tap-offs are colour coded and keyed to ensure a fail safe interconnection with track – easy identification of different systems, eliminates health and safety risks.

Tap-off plugs lock onto the track and can be inserted or removed without the need to isolate the main power supply saves time and minimises disruption.



T3P12 GRY
POWERTRACK 63A
3 POLE
1200 mm

2

T3P24 GRY
POWERTRACK 63A
3 POLE
2400 mm

2

T3P36 GRY
POWERTRACK 63A
3 POLE
3600 mm

2

END FEED UNITS

FLEXIBLE CORNERS

3 POLE GREEN



4 POLE RED



6 POLE GREY/RED



TF3P GRY

TFC3P GRY

T4P12 GRN
POWERTRACK 63A
4 POLE
1200 mm

2

T4P12 RED
POWERTRACK 63A
4 POLE
1200 mm

2

T6P12 GRY/RED
POWERTRACK 63
6 POLE
1200 mm

2

TF3P GRY
3 POLE
16mm² TERMINALS

2

TFC3P GRY
1.2M FLEXIBLE CORNER
3 POLE

2

T4P24 GRN
POWERTRACK 63A
4 POLE CLEAN EARTH
2400 mm

2

T4P24 RED
POWERTRACK 63A
4 POLE CLEAN EARTH
2400 mm

2

T6P24 GRY/RED
POWERTRACK 63A
6 POLE
2400 mm

2

TF3P GRN
3 POLE
16mm² TERMINALS

2

TFC3P GRN
1.2M FLEXIBLE CORNER
3 POLE

2

T4P36 GRN
POWERTRACK 63A
4 POLE CLEAN EARTH
3600 mm

2

T4P36 RED
POWERTRACK 63A
4 POLE CLEAN EARTH
3600 mm

2

T6P36 GRY/RED
POWERTRACK 63A
6 POLE
3600 mm

2

TF4P RED
4 POLE CLEAN EARTH
16mm² TERMINALS

2

TFC4P RED
1.2M FLEXIBLE CORNER
4 POLE CLEAN EARTH

2

TF6P GRY/RED
6 POLE
16mm² TERMINALS

2

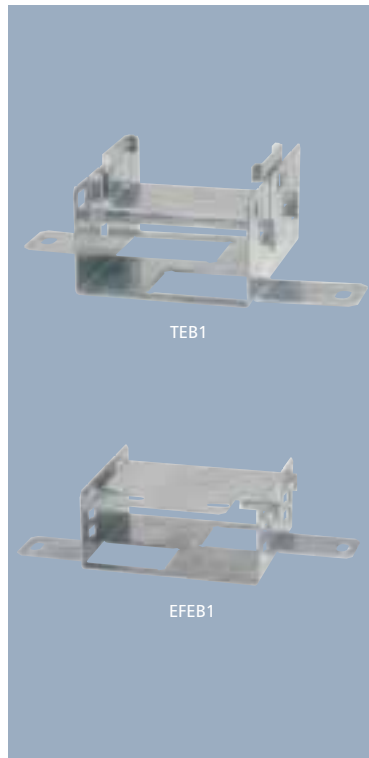
TFC6P GRY/RED
1.2M FLEXIBLE CORNER
6 POLE

2

RAISED ACCESS FLOOR

ACCESSORIES

TAP-OFFS



3 POLE (GREEN AND GREY)

4 POLE CLEAN EARTH (RED)



TP1
TRACK BLANK
END PLATES

10

TDC1
TRACK
DUST COVERS

10

TB1
TRACK
SLAB BRACKET

10

TEB1
TRACK ELEVATING
BRACKET

10

EFEB1
END FEED ELEVATING
BRACKET

10

FBK1
FLOORBOX
LOCK KEY

1

FBT1
FLOORBOX CUT-OUT
TEMPLATE

1

TTU3 GRY
TTU3 GRN
3 POLE 3M TAP-OFF

1
1

TTU3DE GRY
TTU3DE GRN
3 POLE 3M DUAL EARTH TAP-OFF

1
1

TTF3 GRY
TTF3 GRN
3 POLE 3M FUSED TAP-OFF

1
1

TTF3DE GRY
TTF3DE GRN
3 POLE 3M DUAL EARTH TAP-OFF

1
1

TTU5 GRY
TTU5 GRN
3 POLE 5M TAP-OFF

1
1

TTF5DE GRY
TTF5DE GRN
3 POLE 5M FUSED DUAL EARTH TAP-OFF

1
1

TTF5 GRY
TTF5 GRN
3 POLE 5M FUSED TAP-OFF

1
1

TTU3 RED
4 POLE 3M TAP-OFF

1

TTU3DE RED
4 POLE 3M DUAL EARTH TAP-OFF

1

TTF3 RED
4 POLE 3M FUSED TAP-OFF

1

TTF3DE RED
4 POLE 3M DUAL EARTH TAP-OFF

1

TTU5 RED
4 POLE 5M TAP-OFF

1

TTF5DE RED
4 POLE 5M FUSED DUAL EARTH TAP-OFF

1

TTF5 RED
4 POLE 5M FUSED TAP-OFF

1

The 6 Pole GRY/RED track system combines 3 Pole Grey and 4 Pole Red in a single track and therefore uses standard GREY/RED tap offs as appropriate. Tap-offs are available with low smoke zero halogen leads as standard.

FLOORBOXES

GROMMET BOXES



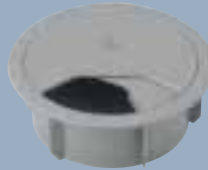
61503 CHA



61503 GRY

ACCESS GROMMET BOXES

POWER AND DATA OUTLET



61400 GRY



61402 GRY



61415 GRY



61401 GRY



61412 GRY

- 61505 CHA** 1
- 61505 GRY** 1
THREE MODULE DEPTH 80MM
- 61506 CHA** 1
- 61506 GRY** 1
FOUR MODULE DEPTH 80MM
- 61503 CHA** 1
- 61503 GRY** 1
THREE MODULE DEPTH 90MM
- 61504 CHA** 1
- 61504 GRY** 1
FOUR MODULE DEPTH 90MM
- 61507 CHA** 1
- 61507 GRY** 1
THREE MODULE DEPTH 120MM
- 61508 CHA** 1
- 61508 GRY** 1
FOUR MODULE DEPTH 120MM

- 61505LK CHA** 1
- 61505LK GRY** 1
THREE MODULE LOCKABLE LID
DEPTH 80MM
- 61506LK CHA** 1
- 61506LK GRY** 1
FOUR MODULE LOCKABLE LID
DEPTH 80MM
- 61503LK CHA** 1
- 61503LK GRY** 1
THREE MODULE LOCKABLE LID
DEPTH 90MM
- 61504LK CHA** 1
- 61504LK GRY** 1
FOUR MODULE LOCKABLE LID
DEPTH 90MM
- 61507LK CHA** 1
- 61507LK GRY** 1
THREE MODULE LOCKABLE LID
DEPTH 120MM
- 61508LK CHA** 1
- 61508LK GRY** 1
FOUR MODULE LOCKABLE LID
DEPTH 120MM

- 61400 CHA** 5
- 61400 GRY** 5
PUSH-FIT GROMMET BOX
- 61402 CHA** 5
- 61402 GRY** 5
SELF-ADJUSTING
GROMMET BOX
- 61415 CHA** 5
- 61415 GRY** 5
SPLIT-LID GROMMET BOX

- 61401 CHA** 1
- 61401 GRY** 1
1 GANG 13A
SWITCHED SOCKET OUTLET
- 61412 CHA** 1
- 61412 GRY** 1
1 GANG 13A
NON-STD SWITCHED
SOCKET OUTLET
- 61410 CHA** 1
- 61410 GRY** 1
EURO DATA OUTLET
UNSERVICED
- 61411 CHA** 1
- 61411 GRY** 1
2 X RJ45 / LU6C
OUTLET
UNSERVICED

MK Floorboxes can accommodate power, voice and data outlets in multiple combinations to suit initial design requirements and future changes in use. Installation is quick and easy, with a reversible frame and self adjusting ratchet system ensuring a flush finish on any normal floor thickness.

RAISED ACCESS FLOOR

**FLOORBOX PRE-WIRED
POWER MODULES**
**Dual Earth Sockets
and Section 607**

Modern offices, schools, universities, laboratories etc, are heavy users of IT, computing and electronic equipment. As most of this equipment is fitted with a filter mechanism to protect data and data transmission against RFI and power surges, small earth leakages emanating from this equipment introduces a current onto the Circuit Protective Conductor (CPC) effectively turning this into a functional earth.

Should the CPC be broken, any equipment downstream of the break is no longer connected to earth. If a fault now occurs in this equipment, the CPC could rise to the mains potential and the fault transferred to other equipment on the circuit. The implicit risks to equipment, data and most importantly users in this situation are dealt with by Section 607 of the 16th edition of the IEE Wiring Regulations, and have led MK to introduce Dual Earth Sockets.

Dual Earth Sockets allow the designer and installer to maintain the earth integrity of the system, which under the requirements of Section 607 is intended to maintain at all times the CPC to ensure safety.

Clean Earth Sockets

Clean Earth Sockets allow the designer and installer to introduce a protective conductor connecting sensitive equipment i.e. a computer, directly to the main earth.

This reduces the possibility of 'noise' occurring on the protective conductor through induced voltages from other equipment, and hence can have benefits in maintaining data and data transmission integrity.



TPL1432



TPL1430



TPL1442

TPL1432
2 GANG NON-STANDARD
SWITCH SOCKET
AND/WITH 3M TAP-OFF (RED)

1

TPL1431
2 GANG SWITCH SOCKET
CLEAN EARTH
AND/WITH 3M TAP-OFF (RED)

1

TPL1430
2 GANG SWITCH SOCKET
AND/WITH 3M TAP-OFF (GREY)

1

TPL1432DE
2 GANG SWITCH SOCKET
DUAL EARTH
AND/WITH 3M TAP-OFF (GREY)

1

TPL1442
2 GANG SOCKET OUTLET
AND/WITH 3M TAP-OFF (GREY)

1

TPL1442DE
2 GANG SOCKET OUTLET
DUAL EARTH
AND/WITH 3M TAP-OFF (GREY)

1



TECHNICAL HOTLINE +44 (0)1268 563720

RAISED ACCESS FLOOR

POWER MODULES

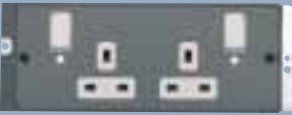
DATA MODULES



T61430



T61443



T61431



T61433



T61432



T71474



T61442



T71488



T71440



T71454



T71444



T71466



T71445



T71750

T61430
2 GANG NON-STANDARD
SWITCH SOCKET
CLEAN EARTH

5

T61431
2 GANG SWITCH SOCKET
CLEAN EARTH

5

T61432
2 GANG SWITCH SOCKET
DUAL EARTH

5

T61442
2 GANG SOCKET OUTLET
DUAL EARTH

5

T61443
3 GANG SOCKET OUTLET

5

T61433
2 GANG SWITCH SOCKET
RCD PROTECTED (30mA)

5

T71474
2 GANG 15A 127V
SOCKET OUTLET
(NON UK)

5

T71488
2 GANG 16A 2P + E
SOCKET OUTLET
(NON UK)

5

T71440
4X RJ45 CAT5E SERVICED

5

T71444
2X SINGLE LINE JACK
UNSERVICED

5

T71445
4X RJ45 / U6 UNSERVICED

5

T71441
BLANK MODULE

5

T71400
BLANKING PLATE

10

T71454
2X MINI LOGIC LINE JACK
UNSERVICED

5

T71466
2X MASTER TELECOM SERVICED

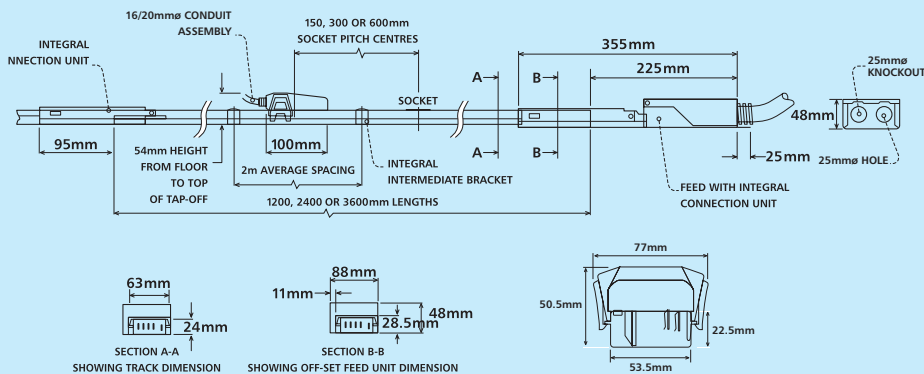
5

T71750
4X RJ45 / EURO UNSERVICED

5

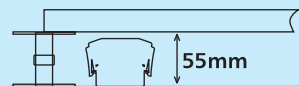
RAISED ACCESS FLOOR

POWERTRACK DIMENSIONS

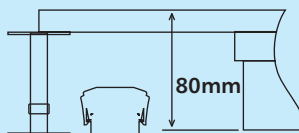


VOID DIMENSIONS

TRACK AND TAP-OFF PLUG



TRACK, TAP-OFF PLUG AND FLOOR BOX



STANDARDS

ASTA certified to EN-60439-2:1993 and IEC 439-2:1987 clause 8.2.3

Designed to comply with: EN60439-2:1993 & IEC 439 2:1987, and the relevant sections of BS5733:1995

Manufactured within ISO 9002 environment

ELECTRICAL SPECIFICATIONS

Rated Current	63	A
Rated Voltage	500	V
Frequency	50/60	Hz
Conditional Short Circuit Rating	16	kA
Resistance per Copper Conductor	1.3	mΩ/m

Volt Drops

Powertrack (Line & Neutral)	2.9	mV/A/m
End Feed Unit	0.3	mV/A
Tap-Off Connection	1.6	mV/A
Tap-Off Connection with 4mm ² Cable	10	mV/A/m
Joint	0.3	mV/A
Flexible Corner	0.8	mV/A
Flexible Corner with 10mm ² Cable	4.0	mV/A/m

Earth Fault Loop Impedance

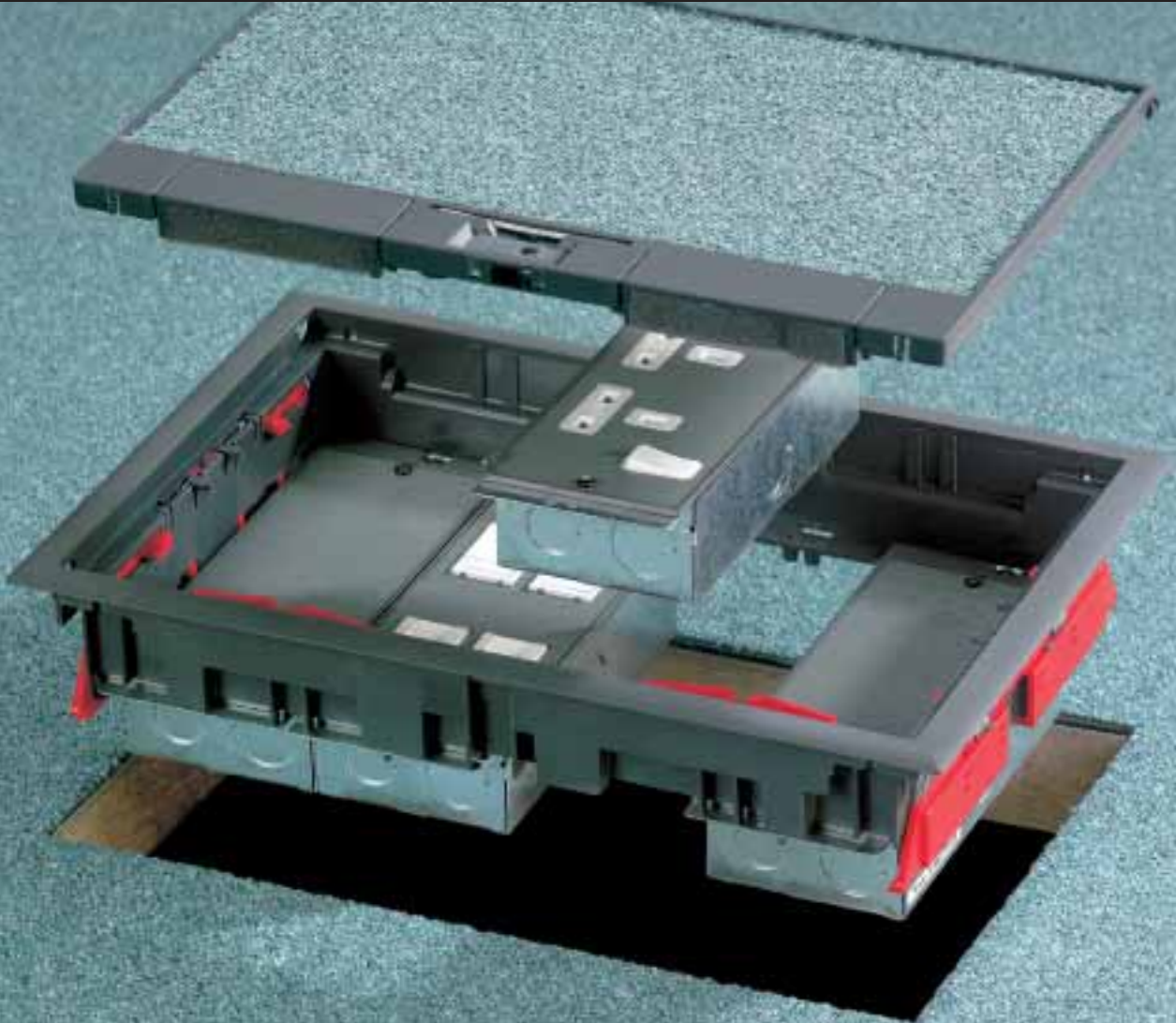
Line Conductor	1.5	mΩ/m
Earth – Case	1.0	mΩ/m
– Conductor	1.5	mΩ/m
– Conductor + Case	0.75	mΩ/m
End Feed Unit	0.3	mΩ
Tap-Off Connection	1.6	mΩ
Tap-Off Connection with 4mm ² Cable	9.22	mΩ/m
Joint	0.3	mΩ
Flexible Corner	0.8	mΩ
Flexible Corner with 10mm ² Cable	3.66	mΩ/m

MECHANICAL SPECIFICATIONS

Number of Conductors	2, 3 or 5
Busbar Conductor cross-sectional area	14.4 mm ²
Power Track Casing Copper Equivalent (where Casing is Protective Earth)	14.5 mm ²
Cable Termination Capacity	16 mm ²
Tap-Off Cable 32A	4 mm ²
Tap-Off Conduit Sizes	16/20 mmØ
Flexible Corner Cable	10 mm ²
Flexible Corner Conduit	25 mmØ
Feed Conduit Entry	2 x 25 mmØ
IP Rating	4X

Grommet Box in Plenum Floors

Floor Box and Grommet Box air leakage rates and test details available on request. Contact Technical Sales and Services department 01268 563720.



Floorbox

- ▲ One size box with three and four module configuration – one size floor tile cut-out.
- ▲ Available in grey or charcoal.
- ▲ Robust, one-piece moulded frame – single action, quick and easy installation and removal.
- ▲ Spring loaded, self-tightening blades provide secure fixing to floor (15-50mm thickness) – no tools required, box drops into floor aperture and blades secure.
- ▲ Quick release, reversible lid with rectangular 6mm carpet inset – provides simple layout changes.
- ▲ Tamperproof, lockable lid option – provides security against accidental disconnection of plugs or unauthorised use.
- ▲ Three box depth choices – 80mm, 90mm and 120mm.
- ▲ Wide selection of power modules (including modules pre-wired with tap-off) and serviced or unserviced data modules, which can be fitted from above or below.
- ▲ Pre-configured boxes, boxes can be assembled to order – saves assembly time on site.

Grommet Box

- ▲ Rotary and split lid variations – both accept 2 x 40mm flexible conduits for maximum data cable access.
- ▲ Split Lid version is complete with integral foam inserts – grips cables to minimise air flow in plenum floors – reversible lid includes 6mm carpet cut-out which allows grommet box to virtually disappear on carpeted floors.
- ▲ Push fit and self tightening blade fixing options – push fit includes moulded 'crush ribs' – self adjusting grommet includes spring loaded blades for secure fitting and easy removal – no tools required for either fixing method.
- ▲ Angled socket outlets in power grommets – relieves strain on 'exiting' cables and can accommodate all types of moulded plug.
- ▲ Unserved LJ6/Euro data grommets available – compatible with MK Electric data outlets.
- ▲ Available in Grey and Charcoal to match floor boxes – allows visually integrated system.

RAISED ACCESS FLOOR

FLOORBOXES



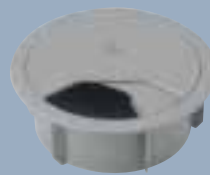
61503 CHA



61503 GRY

GROMMET BOXES

ACCESS GROMMET BOXES



61400 GRY



61402 GRY



61415 GRY

POWER AND DATA OUTLET



61401 GRY



61412 GRY

61505 CHA 1
61505 GRY 1
 THREE MODULE DEPTH 80MM

61506 CHA 1
61506 GRY 1
 FOUR MODULE DEPTH 80MM

61503 CHA 1
61503 GRY 1
 THREE MODULE DEPTH 90MM

61504 CHA 1
61504 GRY 1
 FOUR MODULE DEPTH 90MM

61507 CHA 1
61507 GRY 1
 THREE MODULE DEPTH 120MM

61508 CHA 1
61508 GRY 1
 FOUR MODULE DEPTH 120MM

MK Floorboxes can accommodate power, voice and data outlets in multiple combinations to suit initial design requirements and future changes in use. Installation is quick and easy, with a reversible frame and self adjusting ratchet system ensuring a flush finish on any normal floor thickness.

61505LK CHA 1
61505LK GRY 1
 THREE MODULE LOCKABLE LID DEPTH 80MM

61506LK CHA 1
61506LK GRY 1
 FOUR MODULE LOCKABLE LID DEPTH 80MM

61503LK CHA 1
61503LK GRY 1
 THREE MODULE LOCKABLE LID DEPTH 90MM

61504LK CHA 1
61504LK GRY 1
 FOUR MODULE LOCKABLE LID DEPTH 90MM

61507LK CHA 1
61507LK GRY 1
 THREE MODULE LOCKABLE LID DEPTH 120MM

61508LK CHA 1
61508LK GRY 1
 FOUR MODULE LOCKABLE LID DEPTH 120MM

61400 CHA 5
61400 GRY 5
 PUSH-FIT GROMMET BOX

61402 CHA 5
61402 GRY 5
 SELF-ADJUSTING GROMMET BOX

61415 CHA 5
61415 GRY 5
 SPLIT-LID GROMMET BOX

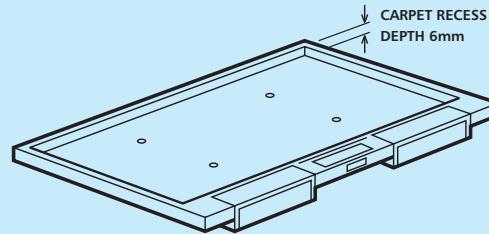
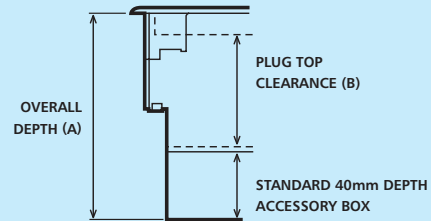
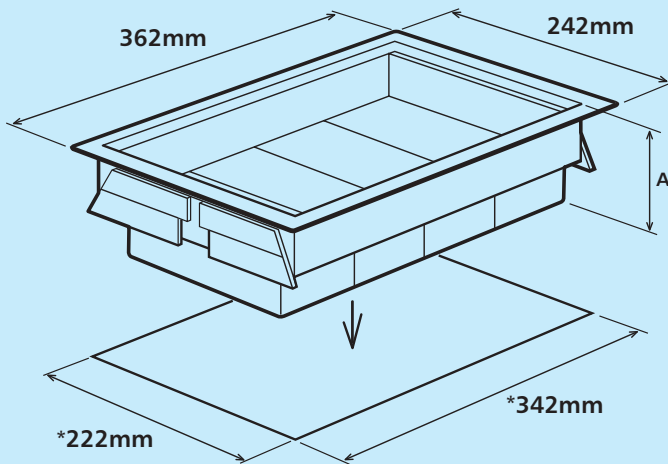
61401 CHA 1
61401 GRY 1
 1 GANG 13A SWITCHED SOCKET OUTLET

61412 CHA 1
61412 GRY 1
 1 GANG 13A NON-STD SWITCHED SOCKET OUTLET
61410 CHA 1

61410 GRY 1
 EURO DATA OUTLET UNSERVICED

61411 CHA 1
61411 GRY 1
 2 X RJ45 / LU6C OUTLET UNSERVICED

FLOORBOX Tile Frame and floor tile cut-out dimensions for 3 and 4 module box



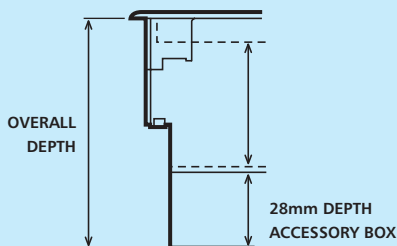
OVERALL DEPTH (A)	PLUG TOP CLEARANCE (B)
80mm	25.5mm
90mm	35.5mm
120mm	65.5mm

*General Tolerance $\pm 1.5\text{mm}$

Tile cut-out cutting template available on request

Floor Boxes are suitable for floor tile thicknesses of 15 – 50mm (including carpet tile)

GROMMET BOX



GROMMET BOX TECHNICAL DIMENSIONS							
LIST NO	DESCRIPTION	DIAMETER	OVERALL DEPTH	FLOOR TILE*	CUT-OUT	KNOCK-OUT	ACCESSORY CUT-OUT
61400	Push-Fit Grommet Box	142mm	50mm	All	127mm (+-1)		
61402	Self-Adjusting Grommet Box	142mm	60mm	15 – 50mm	127mm (+-1.5)		
61415	Circular Grommet Box Split-Lid	142mm	60mm	15 – 50mm	127mm (+-1.5)		
61401	1 Gang 13A SSO	142mm	85mm	15 – 50mm	127mm (+-1.5)	21mm (+/-15) x 3	
61412	1 Gang 13A Non-Std SSO	142mm	85mm	15 – 50mm	127mm (+-1.5)	21mm (+/-15) x 3	
61410	Euro Data Outlet Unserviced	142mm	60mm	15 – 50mm	127mm (+-1.5)		50x50mm Euro frame fitted
61411	2XRJ45 / LJU6C Outlet Unserviced	142mm	60mm	15 – 50mm	127mm (+-1.5)		36.7 x 22.2mm

*To include carpet thickness