

Prestige Plus Aluminium provides a combination of the unbeatable strength of metal with gently curved aesthetics

Superior anodised or powder coated colour finishes enhance the look of any installation. The system also benefits from single piece colour-matched PVC fittings and when combined with 'Edge' accessories provides an unrivalled quality installation.

## SKIRTING AND DADO

### COMPONENT SELECTOR CHART

Components are supplied individually for each of the main trunking assemblies.

The Component Selector Chart lists each component required to make up a length of main trunking.

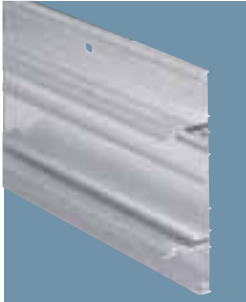
**COLOURS:**  
Natural Anodised Aluminium (ALM) or White (ALMW)

**Customised colours are available in a choice of over 180 RAL colours. Contact our technical hotline +44 (0)1268 563720**

#### MAIN CARRIER

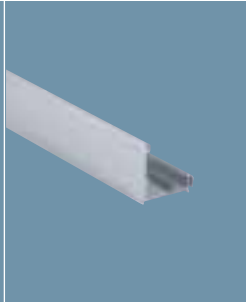
Supplied with 24x lid earthing connectors and 4x earthing braids

3 METRE LENGTHS **6m**



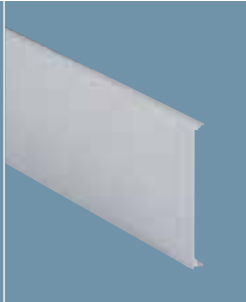
#### EXTENSION CARRIER

3 METRE LENGTHS **6m**



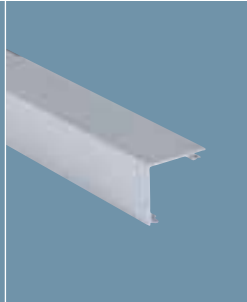
#### STRAIGHT COVER

3 METRE LENGTHS **6m**



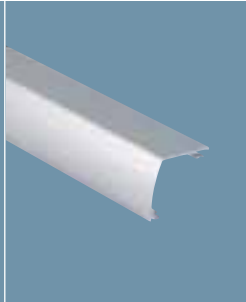
#### SQUARE COVER

3 METRE LENGTHS **6m**



#### CURVED COVER

3 METRE LENGTHS **6m**



**PROFILE L**  
170 X 50mm

VTS/1 ALM

VTS/5 ALM

VTS/14 ALM X 2

VTS/5 ALMW

VTS/14 ALMW X 2

**PROFILE M**  
170 X 50mm

VTS/1 ALM

VTS/5 ALM

VTS/4 ALM

VTS/14 ALM

VTS/5 ALMW

VTS/4 ALMW

VTS/14 ALMW

**PROFILE N**  
212 X 50mm

VTS/1 ALM

VTS/2 ALM

VTS/5 ALM X 2

VTS/14 ALM

VTS/2 ALMW

VTS/5 ALMW X 2

VTS/14 ALMW



TECHNICAL HOTLINE +44 (0)1268 563720

SKIRTING AND DADO

### END CAPS ASSEMBLY

SUPPLIED AS SET OF RIGHT AND LEFT HAND PAIRS

1

### INTERNAL CORNER ASSEMBLY

CONSISTS OF COVER AND CARRIER

1

### EXTERNAL CORNER ASSEMBLY

CONSISTS OF COVER AND CARRIER

1

### COUPLER ASSEMBLY

CONSISTS OF JOINT COVER AND CARRIER COUPLER

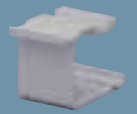
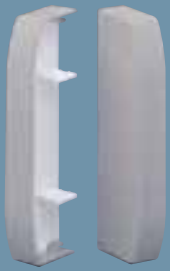
2

### CABLE RETAINER STRAIGHT

10

### CABLE RETAINER SQUARE

10



Material: PVC-U

Material: PVC-U

Material: PVC-U

Material: PVC-U

VTS/LS GRY

VTS/LI GRY

VTS/LE GRY

VTS/LC GRY

VTS/11 ALM

VTS/12 ALM X 2

VTS/LS WHI

VTS/LI WHI

VTS/LE WHI

VTS/LC WHI

VTS/11 ALM

VTS/12 ALM X 2

VTS/MS GRY

VTS/MI GRY

VTS/ME GRY

VTS/MC GRY

VTS/11 ALM

VTS/12 ALM X 2

VTS/MS WHI

VTS/MI WHI

VTS/ME WHI

VTS/MC WHI

VTS/11 ALM

VTS/12 ALM X 2

VTS/NS GRY

VTS/NI GRY

VTS/NE GRY

VTS/NC GRY

VTS/11 ALM X 2

VTS/12 ALM

VTS/NS WHI

VTS/NI WHI

VTS/NE WHI

VTS/NC WHI

VTS/11 ALM X 2

VTS/12 ALM

## SKIRTING AND DADO

FLAT TEE  
UP

FLAT TEE  
DOWN

FLAT ANGLE  
UP

FLAT ANGLE  
DOWN

1

1

1

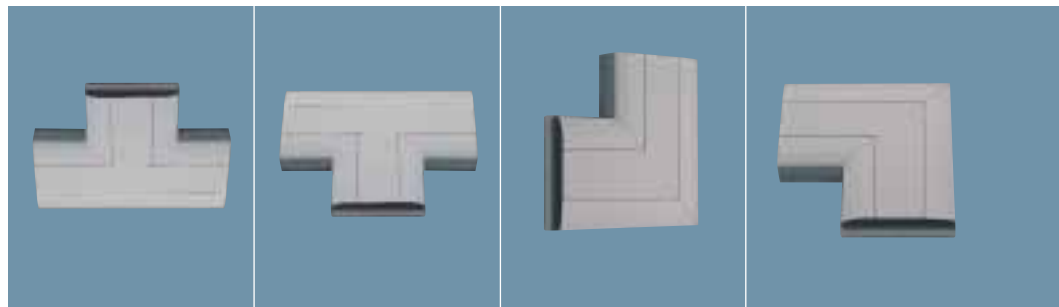
1

To select the correct flat tee or angle, find the appropriate horizontal profile and read across as required.

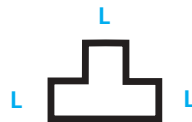
**COLOURS:**

Natural Anodised Aluminium (ALM) or White (ALMW)

Contact our technical hotline +44 (0)1268 563720



**HORIZONTAL PROFILE L**  
170 x 50mm



Vertical Profile L



VTS/TLL ALM

VTS/TLL ALMW

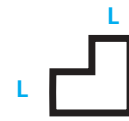


Vertical Profile L



VTS/TLL ALM

VTS/TLL ALMW



VTS/FAL ALM

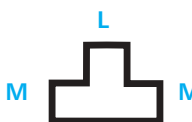
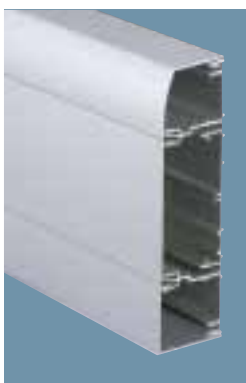
VTS/FAL ALMW



VTS/FAL ALM

VTS/FAL ALMW

**HORIZONTAL PROFILE M**  
170 x 50mm



Vertical Profile L



VTS/TML ALM

VTS/TML ALMW

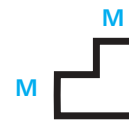


Vertical Profile D



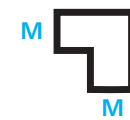
VTS/TMD ALM

VTS/TMD ALMW



VTS/FAM/U ALM

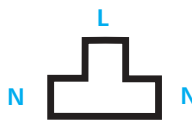
VTS/FAM/U ALMW



VTS/FAM/D ALM

VTS/FAM/D ALMW

**HORIZONTAL PROFILE N**  
212 x 50mm

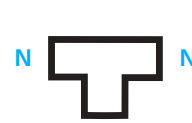


Vertical Profile L



VTS/TNL ALM

VTS/TNL ALMW



Vertical Profile K



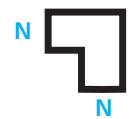
VTS/TNK ALM

VTS/TNK ALMW



VTS/FAN/U ALM

VTS/FAN/U ALMW



VTS/FAN/D ALM

VTS/FAN/D ALMW



TECHNICAL HOTLINE +44 (0)1268 563720

SKIRTING AND DADO

## REAR CABLE ENTRY AND CABLE ENTRY BOX

## CABLE DIVIDER AND CROSS OVER BRIDGE



VTS/15 WHI



VTS/50



1922 ALM



VTS/90

### **VTS/15 WHI**

REAR CABLE ENTRY

**1**

### **1922 ALM**

FLUSH CABLE  
ENTRY BOX  
FOR USE WITH VTS/15

**5**

### **VTS/50**

CABLE DIVIDER

3 METRE LENGTHS

**30m**

### **VTS/90**

CROSS OVER  
BRIDGE

**10**

VTS/15  
Material: PVC-U

Material: PVC-U

## SKIRTING AND DADO

ACCESSORY  
BOXESMCB/RCD  
HOUSINGMINI  
TRUNKING  
ADAPTORSCONDUIT  
ADAPTORS

VTS/6035 WHI



VTS/7035 WHI



VTS/8028 WHI



VTS/2017 WHI



VTS/25 S WHI



VTS/4545 WHI



VTS/4545R WHI



VTS/MH WHI



VTS/KMH/1 WHI



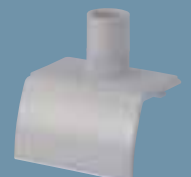
VTS/81 GRY



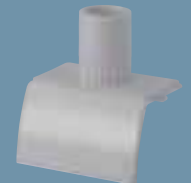
VTS/82 GRY



VTS/83 GRY



VTS/84 GRY



VTS/85 GRY

**VTS/6025 WHI** 25

1 GANG  
OUTLET BOX  
25MM DEEP  
HORIZONTAL AND  
VERTICAL MOUNTING

**VTS/6035 WHI** 25

1 GANG  
OUTLET BOX  
35MM DEEP  
HORIZONTAL AND  
VERTICAL MOUNTING

**VTS/2017 WHI** 10

BOX ADAPTER

**VTS/7025 WHI** 10

2 GANG  
OUTLET BOX  
25MM DEEP

**VTS/7035 WHI** 10

2 GANG  
OUTLET BOX  
35MM DEEP

**VTS/8028 WHI** 5

3 GANG  
OUTLET BOX  
28MM DEEP

**VTS/25 S WHI** 10

ACCESSORY  
SOCKET SPACER  
TO ESTABLISH THE  
MINIMUM DISTANCE  
BETWEEN OUTLETS

**K3716** 10

BOX EARTH TERMINAL

**VTS/4545 WHI** 10

FLAT ADAPTOR PLATE  
(NON UK)  
45MM X 45MM APERTURE

**VTS/4545R WHI** 10

RAISED ADAPTOR  
PLATE (NON UK)  
45MM X 45MM APERTURE

**VTS/35B WHI** 10

ADAPTOR BOX BASE  
(NON UK)

**VTS/6000 WHI** 10

1 GANG  
SOCKET MOUNTING FRAME  
(PHOTO – SEE PAGE 17)

**VTS/7000 WHI** 5

2 GANG  
SOCKET MOUNTING FRAME  
(PHOTO – SEE PAGE 17)

**VTS/2060 WHI** 10

2 GANG L1U6C/RJ45  
SUPPLIED WITH  
LID JOINT COVERS  
(PHOTO – SEE PAGE 17)

**VTS/2070 WHI** 10

2 GANG EURO/RJ45  
SUPPLIED WITH  
LID JOINT COVERS  
(PHOTO – SEE PAGE 17)

**VTS/MH WHI** 1

MCB/RCD HOUSING

**VTS/KMH/1 WHI** 1

MCB/RCD HOUSING  
WITH COVER  
(ACCESSORY  
NOT SUPPLIED)

Mounts directly to central  
compartment of trunking to  
accept up to 2 x one  
module products from the  
Sentry range of MCBs and  
RCDs (excluding one module  
RCBOs).

Material: PVC-U

**VTS/81 GRY** 10

SQUARE COVER  
FOR YT1-YT3 MINI TRUNKING  
USE APPROPRIATE YEA  
ADAPTOR

**VTS/82 GRY** 10

CURVED COVER  
FOR YT1-YT3 MINI TRUNKING  
USE APPROPRIATE  
YEA ADAPTOR

**VTS/83 GRY** 10

CURVED COVER  
FOR YT4 MINI TRUNKING

**VTS/814 GRY** 10

SQUARE COVER  
FOR YT4 MINI TRUNKING

Material: PVC-U

**VTS/84 GRY** 10

20MM CONDUIT  
ADAPTOR

**VTS/85 GRY** 10

25MM CONDUIT  
ADAPTOR

**PAL 1000** 20

SPARE CARRIER  
EARTH CONNECTOR  
SUPPLIED WITH 40  
CLAMPS AND 20 BRAIDS

**PAL 1001** 20

SPARE LID  
EARTH CONNECTOR  
SUPPLIED WITH 20 LID  
EARTH CONNECTOR CLIPS

Conduit Adaptors  
Material: PVC-U

Accessory Boxes  
Material: PVC-U