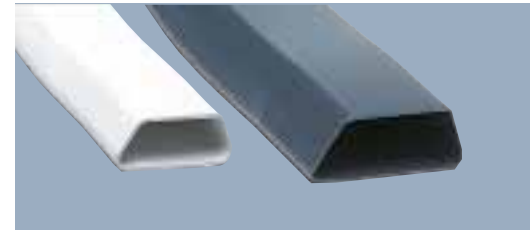


DUCTING

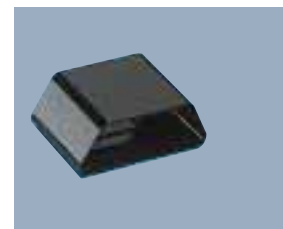
3 METRE LENGTHS



60 x 25mm	88200	12m
90 x 35mm	88100	12m

STANDARD DUCTING LENGTH: 3 metres
MATERIAL: PVC-U

JOINTING SLEEVE



60 x 25mm	88206	5
90 x 35mm	88106	5



Provides adaptable distribution highways in screeded floors.

Prestige Screeded is especially useful where locations of dividing walls are not decided or are liable to change. The system comprises of Underfloor Cable Ducting, Concealed Outlet Boxes, Junction Boxes and Vertical Access Boxes which can be used together to provide a complete layout in floors with a minimum screed depth of 55mm.



TECHNICAL HOTLINE +44 (0)1268 563720

SCREEDED FLOOR

**90°
VERTICAL
BEND**

**45°
VERTICAL
BEND**

**90°
HORIZONTAL
BEND**

**45°
HORIZONTAL
BEND**

**DUCT
ADAPTOR**

**DUCT
ADAPTOR
REDUCER**

TO ACCEPT
88100 DUCTING

TO REDUCE
88107 TO
ACCEPT 88200



88246	1	88247	1	88248	1	88249	1	88107	5	88150	5
88142	1	88143	1	88144	1	88145	1	88107	5		

**TWIN DUCT
FIXING CLIP**

**TRIPLE DUCT
FIXING CLIP**

**DIRECT
OUTLET**

**DIRECT
OUTLET
PLUG**

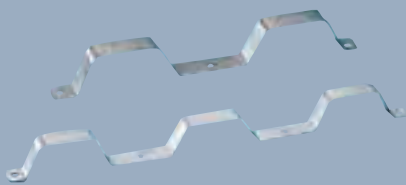
**FLOOR
FLANGE**

**DOMED
DUCT
OUTLET
PLUG**

FOR USE WITH
88010

FOR USE WITH
88010

FOR USE WITH
88010



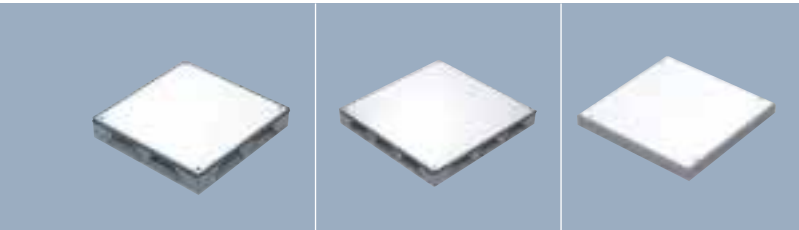
88216	10	88217	10	88010	5	88011	5	88012	1	88013	1
88116	10	88117	10	88010	5	88011	5	88012	1	88013	1

SCREEDED FLOOR

JUNCTION BOX

BASES

FRAME AND COVER ASSEMBLY



88120
2 X 2 ENTRIES



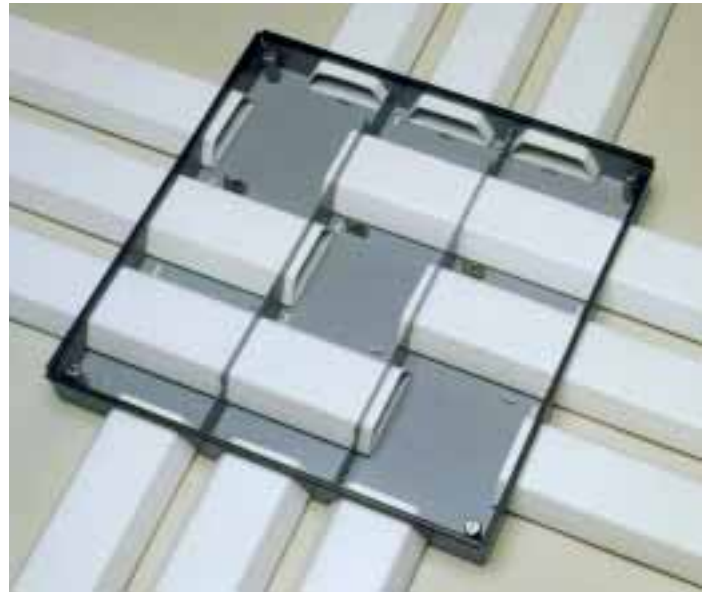
88130
3 X 3 ENTRIES



88064
2 X 2 ENTRIES



88084
3 X 3 ENTRIES



DUCT REDUCER

FOR USE WITH
88200 DUCTING

BLANK

ELEVATOR/SCREEDING KITS

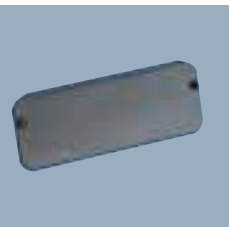
ELEVATOR/SCREEDING KITS ARE REQUIRED AND MUST BE ORDERED TO SUIT THE SCREED DEPTH. THE KIT COMPRISES ELEVATING SCREWS TO SUIT THE SCREED DEPTH RANGE AND A SCREEDING SKIRT

PEDESTAL UNITS

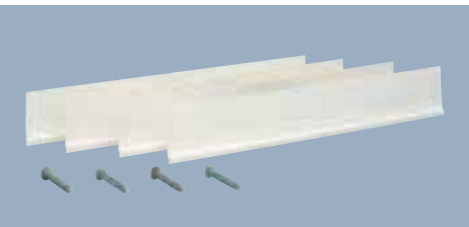
PEDESTAL UNITS ALLOW SERVICES TO BE POSITIONED ANYWHERE ALONG THE LINE OF THE DUCTING. WHEN FIXING TO UNDERFLOOR DUCTING USE 88012 FLOOR FLANGE.



88201



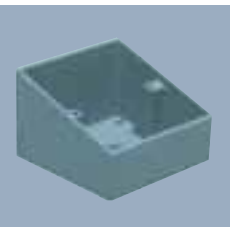
88101



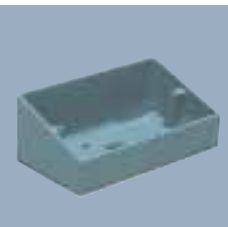
- 88016**
2 X 2 ENTRIES
55 - 72MM DEEP
- 88021**
2 X 2 ENTRIES
63 - 82MM DEEP
- 88026**
2 X 2 ENTRIES
73 - 92MM DEEP
- 88031**
2 X 2 ENTRIES
83 - 102MM DEEP
- 88036**
2 X 2 ENTRIES
93 - 110MM DEEP



- 88017**
3 X 3 ENTRIES
55 - 72MM DEEP
- 88022**
3 X 3 ENTRIES
63 - 82MM DEEP
- 88027**
3 X 3 ENTRIES
73 - 92MM DEEP
- 88032**
3 X 3 ENTRIES
83 - 102MM DEEP
- 88037**
3 X 3 ENTRIES
93 - 110MM DEEP



88311
ONE GANG



88321
TWO GANG





VERTICAL OUTLET BOXES

TWO COMPARTMENT

THREE COMPARTMENT



88152
2 COMPARTMENT
SHALLOW

1

88172
2 COMPARTMENT
FULL ACCESS

1

88153
3 COMPARTMENT
SHALLOW

1

88173
3 COMPARTMENT
FULL ACCESS

1

FLUSH COVER

OVERLAPPING COVER

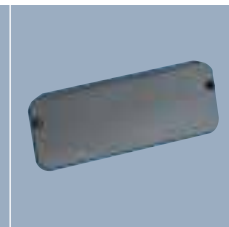
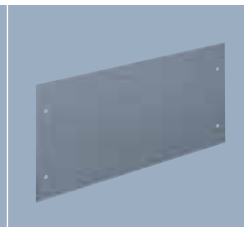
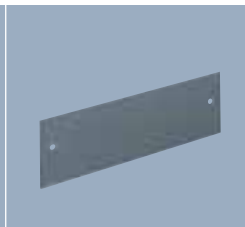
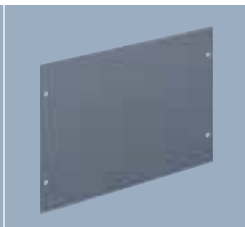
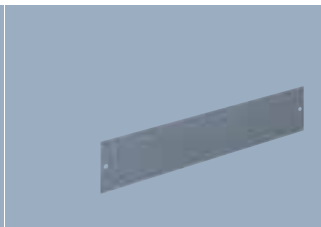
BLANK

SHALLOW

FULL ACCESS

SHALLOW

FULL ACCESS



88176
2 COMPARTMENT
260MM WIDE
X 70MM DEEP

1

88184
2 COMPARTMENT
260MM WIDE
X 170MM DEEP

1

88180
2 COMPARTMENT
280MM WIDE
X 80MM DEEP

1

88188
2 COMPARTMENT
280MM WIDE
X 180MM DEEP

1

88101
BLANK PLATE

5

88177
3 COMPARTMENT
370MM WIDE
X 70MM DEEP

1

88185
3 COMPARTMENT
370MM WIDE
X 170MM DEEP

1

88181
3 COMPARTMENT
390MM WIDE
X 80MM DEEP

1

88189
3 COMPARTMENT
390MM WIDE
X 180MM DEEP

1

SCREEDED FLOOR

CONCEALED OUTLET BOXES



88112 GRY
2 COMPARTMENT

1

88113 GRY
3 COMPARTMENT

1

SEGREGATOR FIXING KITS

MUST BE ORDERED SEPARATELY TO SUIT THE SCREED DEPTH

CONCEALED OUTLET BOX BLANK

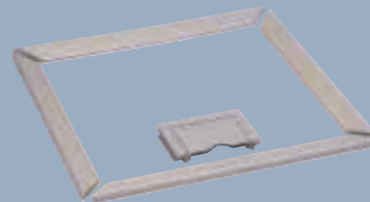
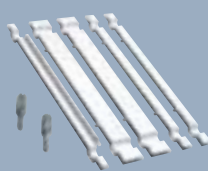
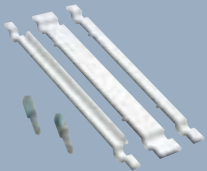
TRIM KITS

2MM
GREY OR
CHARCOAL

4MM
GREY OR
CHARCOAL

ACCESSORY SPACER

FOR USE WITH SCREED DEPTHS LESS THAN 63MM



88127
2 COMPARTMENT
55 - 72MM DEEP

1

88128
3 COMPARTMENT
55 - 72MM DEEP

1

88105
BLANK PLATE

5

88612 GRY
88612 CHA
2 COMPARTMENT

1

88616 GRY
88616 CHA
2 COMPARTMENT

1

88008

1

88132
2 COMPARTMENT
70 - 91MM DEEP

1

88133
3 COMPARTMENT
70 - 91MM DEEP

1

88613 GRY
88613 CHA
3 COMPARTMENT

1

88617 GRY
88617 CHA
3 COMPARTMENT

1

88136
2 COMPARTMENT
89 - 110MM DEEP

1

88137
3 COMPARTMENT
89 - 110MM DEEP

1

SERVICED ACCESSORY PLATES

SERVICED ACCESSORY PLATES ARE SUPPLIED WITH UNASSEMBLED ACCESSORIES.

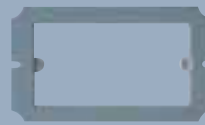
UNSERVICED ACCESSORY PLATES



K85671



K85622



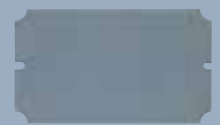
81655



81659



81662



81650



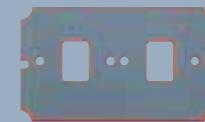
K85672



81695



81660



85631



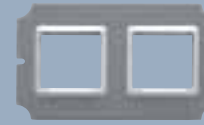
81665



K85673



85634



81667

K85671

1

2 GANG
13 AMP SWITCHSOCKET
(DUAL EARTH)

K85672

1

2 GANG
13 AMP SOCKET
(DUAL EARTH)

K85673

1

2 GANG
13 AMP SWITCHSOCKET
(CLEAN EARTH)

K85671 and K85672
have two earth terminals to provide a double earth facility for use when installations are to comply with Regulation 607 of BS 7671, IEE Wiring Regulations (16th Edition)

K85673
has the provision for two independent earth terminals for installations where a high integrity or clean earth is required.

K85622

1

2 GANG
NON-STANDARD
SWITCHSOCKET
(CLEAN/DUAL EARTH)

81695

1

2 GANG SOCKET
16A 2P+E
(NON UK)

85634

1

2 GANG
13 AMP SWITCHSOCKET
(SIDE WIRED)

K85622
has the provision for two independent earth terminals for installations where a high integrity or clean earth is required.

85634
Recommended for use in screeds of less than 63mm

81655

1

2 GANG
ACCESSORY PLATE
(120.6MM FIXING CENTRES)

81660

1

1 GANG
ACCESSORY PLATE
(60.3MM FIXING CENTRES)

81659

1

TWO X 1 GANG
LUJ/2 MINI LOGIC
TELEPHONE SOCKETS

85631

1

TWO X 1 GANG
TELEPHONE SOCKETS

85631
Accepts 462 WHI and 467 WHI single gang master and secondary telephone sockets and 1488 WHI telephone/data socket.

81662

1

4 X RJ45/LJU6C
TELEPHONE/
DATA SOCKETS

81665

1

6 X BNC
CONNECTORS

81667

1

4 X RJ45/EURO
TELEPHONE/
DATA SOCKETS

81650

1

BLANK PLATE