



Quader 60



L/W/H: 2,7/4,7/4,7 cm
cable-L: 15 cm



Quader 60 461061
£ 21,00

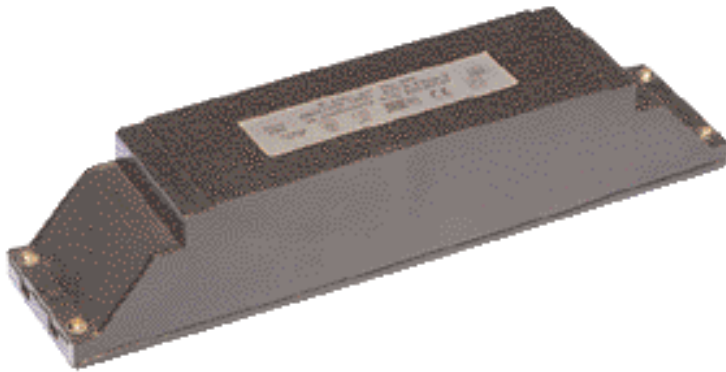
Slim



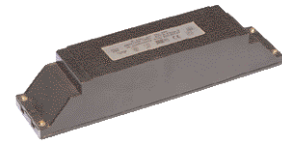
L/W/H: 10,3/2,2/3 cm
cable-L: 15 cm



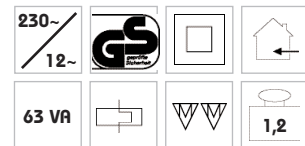
Transformer Slim 461068
£ 21,00



Standard H 60



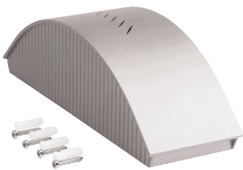
L/W/H: 19/5,2/4,5 cm



with thermal fuse

Transformer H 60
black ▼ 451055
£ 13,00

Cotto 150 Transformer housing

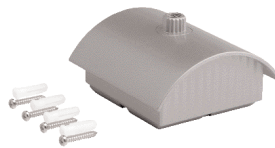


L/B/H: 24/8/7,5 cm

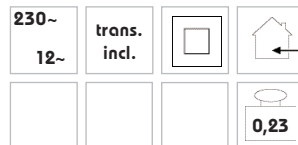


Cotto 150-Transf.-housing
for electr. transformers
up to 150 VA
silver-grey 186872
£ 27,00

Cotto M10



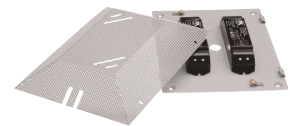
L/W/H: 9,5/9,5/6 cm



Transformer with M 10x 1
inner thread for the stik-
klicht programm.
20-60 VA, 12 V.

Cotto M 10-transformer
silver-grey 186862
£ 31,00

Design housing II



L/W/H: 26,4/21,2/4 cm



Design housing II
for 2 Transformers
max. 150 W
silver-grey 459912
£ 31,00

Electronic transformers technical notes

All illustrated electronic Transformers are safety transformers in compact build. They are protected against overload and short circuit.

These transformers can be used in combination with a **resistive/trailing edge** dimmer. Please pay attention to the manufacturers guide-lines.

Please note:

The secondary cable of an electronic transformer must never exceed 2 meters, otherwise it can cause emission interference.

F.N. 01



L/W/H: 15,1/3,6/2,7 cm

	230 V 12 V _{eff}	VA 20-60		0,13

Reversible temperature overload switch
 $t_0 = 50^\circ\text{C}$
 Secondary connection:
 2 screw terminal

F.N. 01
 20-60 VA **461067**
 £ 7,00

F.N. 02



L/W/H: 16,6/3,9/3,3 cm

	230 V 12 V _{eff}	VA 20-105		0,16

Reversible temperature overload switch
 $t_0 = 50^\circ\text{C}$
 Secondary connection:
 3 screw terminal

F.N. 02
 20-105 VA **461107**
 £ 9,00

F.N. 03



L/W/H: 16,6/3,9/3,3 cm

	230 V 12 V _{eff}	VA 50-150		0,28

Reversible temperature overload switch
 $t_0 = 50^\circ\text{C}$
 Secondary connection:
 3 screw terminal

F.N. 03
 50-150 VA **461157**
 £ 11,00

F.N. 04



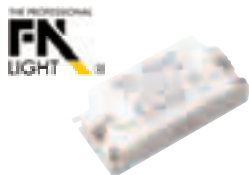
L/W/H: 20/4,3/3,9 cm

	230 V 12 V _{eff}	VA 50-210		0,3

Reversible temperature overload switch
 $t_0 = 50^\circ\text{C}$
 Secondary connection:
 3 screw terminal

F.N. 04
 50-210 VA **461217**
 £ 19,00

F.N. Minitransformer



U/W/H: 8,5/4,2/2,2 cm

	230 V 12 V _{eff}	VA 10-60		0,07

Reversible temperature overload switch
 LF: $\cos \varphi = 0,98$, $t_0 = 50^\circ \text{C}$
 Secondary connection:
 1 screw terminal
 Dimmable with resistive / trailing edge dimmer.

F.N. Mini transformer
 10-60 VA **461062**
£ 14,00

Mini transformer for transformer box



U/W/H: 9/3/2 cm

	230 V 12 V _{eff}	VA 10-60		0,07

Reversible temperature overload switch
 LF: $\cos \varphi = 0,96$, $t_0 = 40^\circ \text{C}$
 Secondary connection:
 1 screw terminal

Mini transformer for transformer box
 10-60 VA **461060**
£ 14,00

Transformer box
 see p. 382



Whole



Ø/T: 5,5/2,3 cm

	230 V 11,5 V _{eff}	VA 20-70		0,1

Reversible temperature overload switch
 LF: $\cos \varphi = 0,98$, $t_0 = 35^\circ \text{C}$
 Secondary connection:
 free cable ends approx. 20 cm

Whole
 20-70 VA **461050**
£ 18,00

F.N. 80



U/W/H: 4/3/11,2 cm

	230 V 12 V _{eff}	VA 20-80		0,1

Reversible temperature overload switch
 LF: $\cos \varphi = 0,96$, $t_0 = 40^\circ \text{C}$
 Secondary connection:
 1 screw terminal

F.N. 80
 20-80 VA **461089**
£ 9,00

F.N. 105



U/W/H: 4/3/11,2 cm

	230 V 12 V _{eff}	VA 20-105		0,18

Reversible temperature overload switch
 LF: $\cos \varphi = 0,96$, $t_0 = 40^\circ \text{C}$
 Secondary connection:
 1 screw terminal

F.N. 105
 20-105 VA **461109**
£ 11,00

F.N. 150



U/W/H: 4,7/3,3/15 cm

	230 V 12 V _{eff}	VA 50-150		0,08

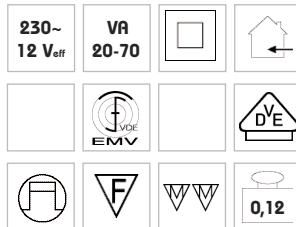
Reversible temperature overload switch
 LF: $\cos \varphi = 0,96$, $t_0 = 40^\circ \text{C}$
 Secondary connection:
 1 screw terminal

F.N. 150
 50-150 VA **461159**
£ 18,00

Osram Mouse 70



L/W/H: 11/5,5/3,5 cm



Osram Mouse 70

230 V through wiring
secondary connection:

1 screw terminal
dimnable

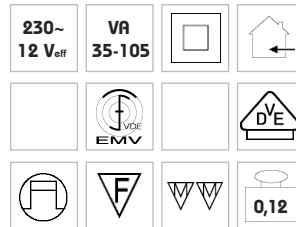
light grey - blue **461075**

£ 17,00

Osram Mouse 105



L/W/H: 11/5,5/3,5 cm



Osram Mouse 105

230 V through wiring
secondary connection:

1 screw terminal
dimnable

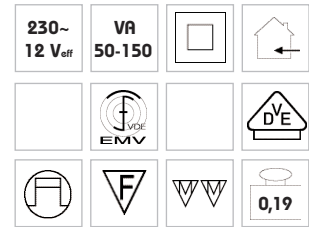
light grey - blue **461105**

£ 18,00

Osram Mouse 150



L/W/H: 15,2/5,4/6,2 cm



Osram Mouse 150

230 V through wiring
secondary connection:

3 screw terminals
dimnable

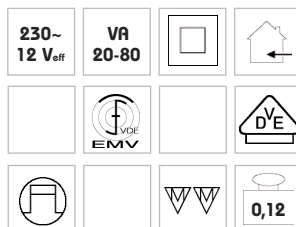
light grey - blue **461155**

£ 29,00

Flat 80



L/W/H: 14/5,5/1,7 cm



Trafo Flat 80

230 V through wiring
secondary connection:

3 screw terminals
dimnable

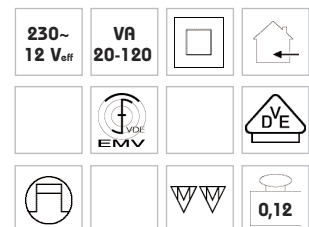
white **462080**

£ 21,00

Flat 120



L/W/H: 14/5,5/1,7 cm



Trafo Flat 120

230 V through wiring
secondary connection:

3 screw terminals
dimnable

white **462120**

£ 25,00