

Now also in
stainless steel

WALRAVEN



* WM * RAPIDRAIL®

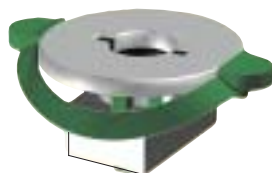
A reliable and versatile fixing system consisting of fixings rails and various accessories

- Accessories completely pre-assembled 'ready-to-use'
- No loose parts such as bolts, nuts and washers
- Accessories can be inserted in the rail very easily thanks to the unique plastic spring
- Stainless steel accessories with blue spring
- Fixing rail WM15 and WM 30 can be used on both sides
- Fast and easy fixing

SAVE UP TO 40%
FIXING TIME



Fixing rails



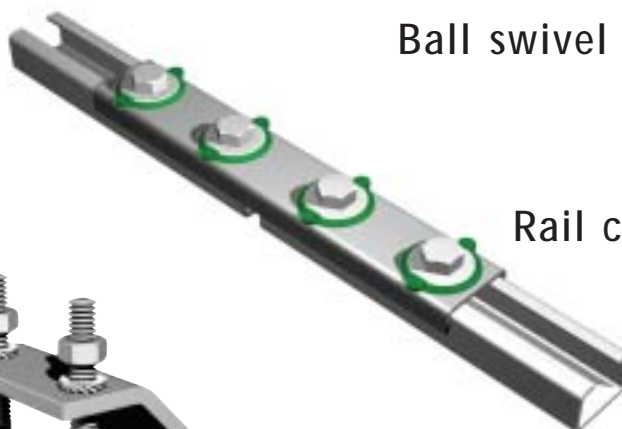
Slide nuts



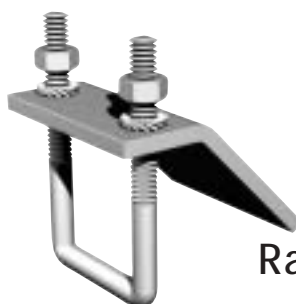
Slide T-bolts assemblies



Ball swivel assemblies



Rail connectors



Rail beam clamps



www.walraven.com

BETTER INSTALLATION SYSTEMS

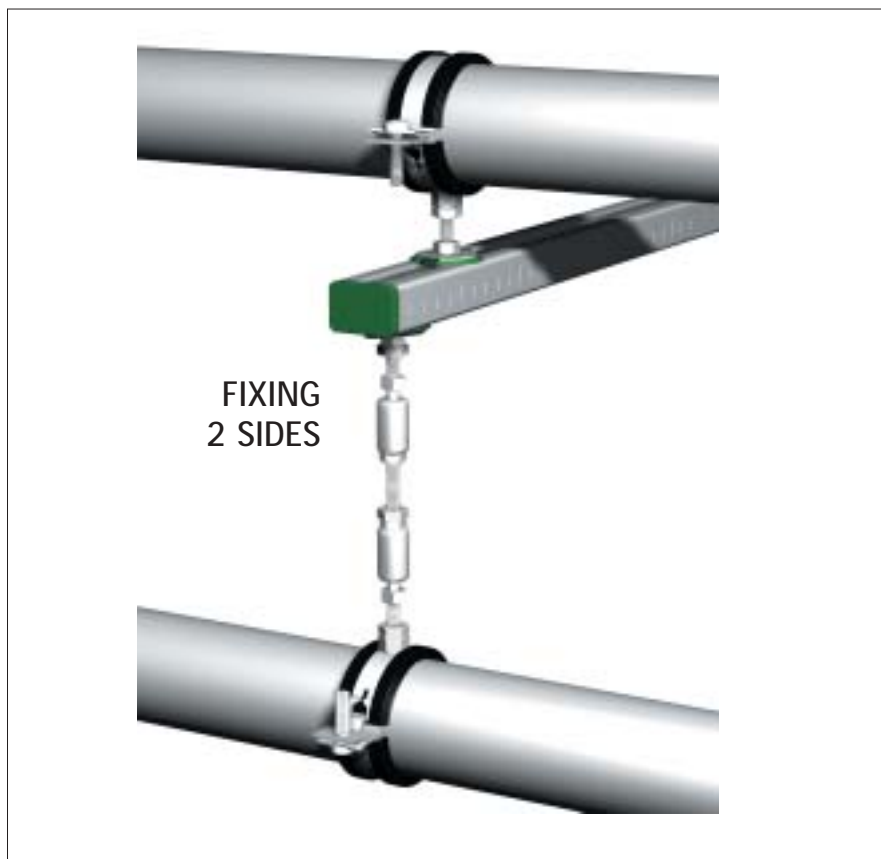
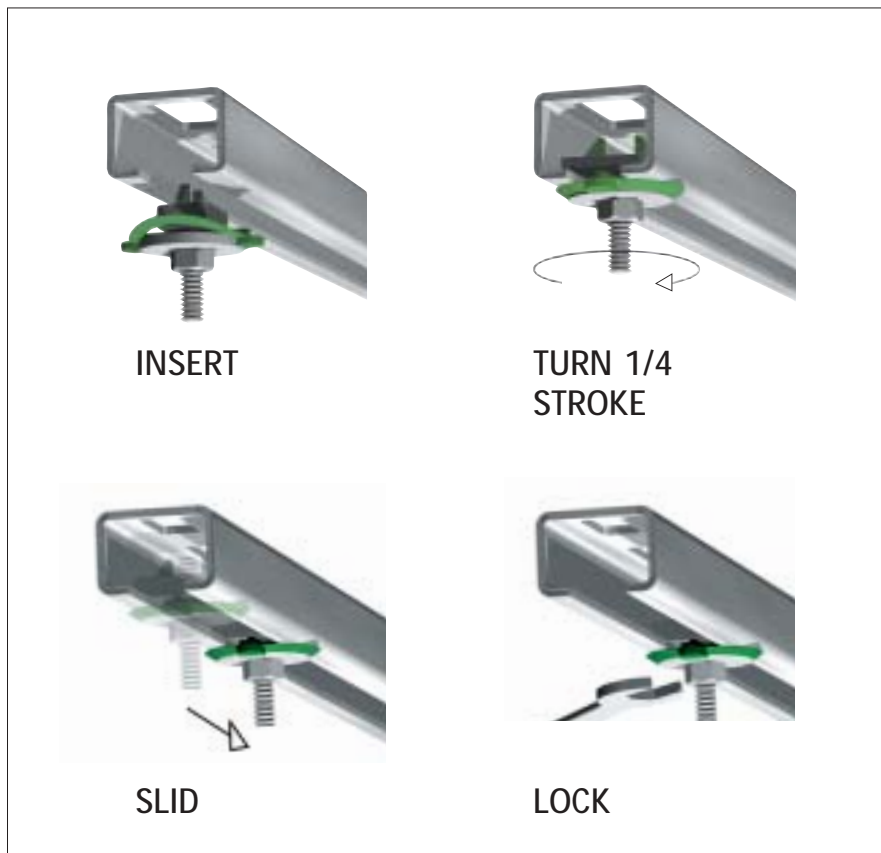
WM RapidRail® is a reliable and versatile fixing system, consisting of fixing rails, cantilever arms and various accessories.

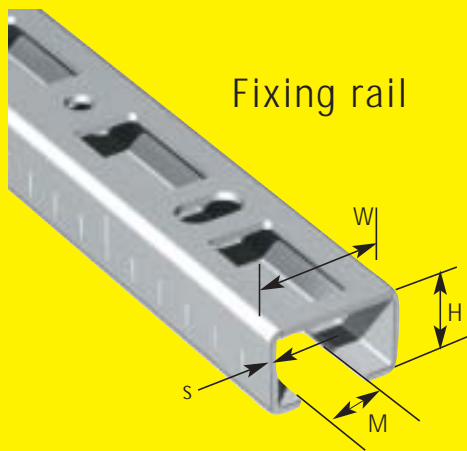
The system has no loose parts. All accessories are completely pre-assembled and delivered 'ready-to-use' on the building site. The system allows rail constructions and pipe fixings to be produced in seconds.

Save up to 40% fixing time

A *WM* RapidRail® slide nut, slide T-bolt assembly or ball swivel hanger has a unique plastic spring and is inserted in the rail with only one hand. When the slide nut is inserted it will neither fall out or turn while it is being fixed into the rail. Once the nut is slid into the desired position it can be locked in place and the pipe fitted. *WM* RapidRail® is so easy to use that it is possible to save up to 40% in fixing time!

Fixing rail WM15 and WM30 and cantilever arms WM15 have a unique hole pattern. The accessories can easily be used on both sides of the rail.





Fixing rail



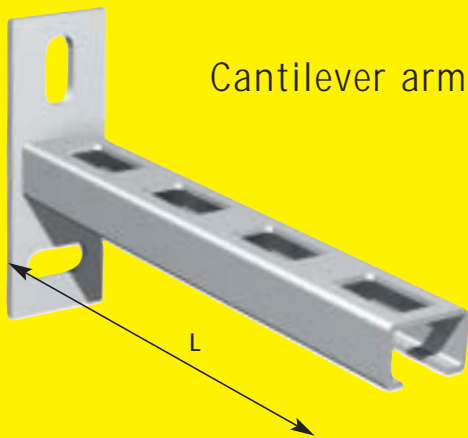
***WM* FIXING RAILS**

pre-galvanised	Type	L=2000 (mm)	L=6000 (mm)	W x H x s (mm)	M (mm)
	WM0	650 5 000	650 5 600 ⁽¹⁾	27 x 18 x 1,20	15
WM1	650 5 001	650 5 601	30 x 15 x 2,00	15	
WM15	650 5 015	650 5 615	30 x 20 x 1,75	15	
WM2	650 5 002	650 5 602	30 x 30 x 2,00	15	
WM30	650 5 030	650 5 630 ⁽¹⁾	30 x 45 x 2,00	15	
WM14	650 5 014	650 5 614	38 x 40 x 2,00	17	

STAINLESS STEEL 316	Type	L=2000 (mm)	L=6000 (mm)	W x H x s (mm)	M (mm)
	WM1	650 7 001	-	30 x 15 x 2,00	15
WM15	650 7 015	-	30 x 20 x 1,75	15	
WM2	650 7 002	-	30 x 30 x 2,00	15	

⁽¹⁾ on demand

⁽²⁾ also in lengths of 200, 250, 300 and 400 mm



Cantilever arm

***WM* CANTILEVER ARMS**

L (mm)	WM0	WM1	WM15	WM2	WM14
150	660 3 015	660 3 115	660 3 715	660 3 215	-
160	-	-	-	-	660 3 616
200	660 3 019	660 3 120	660 3 720	660 3 220	660 3 620
240	-	-	-	-	660 3 624
250	-	660 3 125	660 3 725	660 3 225	-
300	-	660 3 130	-	660 3 230	-
320	-	-	-	-	660 3 632
360	-	-	-	-	660 3 636
400	-	-	-	660 3 240	660 3 640
440	-	-	-	-	660 3 644
480	-	-	-	-	660 3 648
500	-	-	-	660 3 250	660 3 650
520	-	-	-	-	660 3 652
560	-	-	-	-	660 3 656
600	-	-	-	-	660 3 660
640	-	-	-	-	660 3 664
720	-	-	-	-	660 3 672
1040	-	-	-	-	660 3 604

STAINLESS STEEL 316	L (mm)	WM1	WM2
	200	660 7 120	-
300	-	660 7 230	
500	-	660 7 250	

***WM* FABRICATED BACK PLATES**

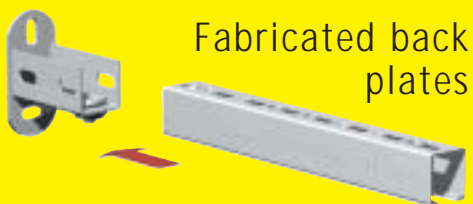
For WM0, 1, 15, 2 and 30	For WM14
661 3 200	661 3 140**

For WM1, 15 and 2
661 7 200

STAINLESS STEEL 316

Zinc plated, unless mentioned otherwise.

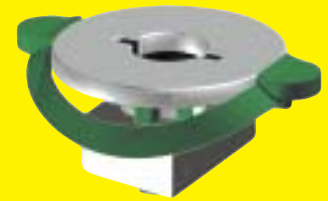
** Not in RapidRail® execution



Fabricated back plates

WM RAPIDRAIL® SLIDE NUTS

Type	For WM0, 1, 15, 2 and 30	For WM14
M6	651 3 106	651 4 106
M8	651 3 108	651 4 108
M10	651 3 110	651 4 110



Slide nuts

STAINLESS
STEEL 316

Type	For WM1, 15 and 2
M6	651 7 306
M8	651 7 308
M10	651 7 310

WM RAPIDRAIL® T-BOLT ASSEMBLIES WITH MALE THREAD

L (mm)	For WM0, 1, 15, 2 and 30			For WM14	
	M6	M8	M10	M8	M10
20	652 3 602	-	-	-	-
25	-	652 3 802	652 3 002	652 4 802	-
30	652 3 603	652 3 803	652 3 003	652 4 803	652 4 003
40	653 3 604	652 3 804	652 3 004	652 4 804	652 4 004
50	-	652 3 805	652 3 005	652 4 805	652 4 005
60	-	652 3 806	652 3 006	652 4 806	652 4 006
70	-	652 3 807	652 3 007	652 4 807	-
80	-	652 3 808	652 3 008	652 4 808	652 4 008
90	-	652 3 809	652 3 009	-	652 4 009
100	652 3 610	652 3 810	652 3 010	652 4 810	652 4 010
120	-	652 3 812	-	-	-
150	-	652 3 815	-	652 4 815	-
160	-	652 3 816	652 3 016	-	-
180	-	652 3 818	652 3 018	-	-
200	-	652 3 820	-	-	-



T-bolt assemblies with male thread

STAINLESS
STEEL 316

L (mm)	For WM1, 15 and 2		
	M6	M8	M10
25	652 7 062	-	-
40	-	652 7 084	652 7 094
80	-	652 7 088	652 7 098

WM RAPIDRAIL® T-BOLT ASSEMBLIES WITH FEMALE THREAD

Type	For WM0, 1, 15, 2 and 30	For WM14
M8 x 50 mm	652 0 020	652 4 408
M10 x 50 mm	652 0 030	652 4 410



T-bolt assemblies with female thread

WM RAPIDRAIL® BALL SWIVEL HANGER ASSEMBLIES (with slide nut)

Type	For WM0, 1, 15, 2 and 30	For WM14
M8 x 15 mm (short)	652 0 100	-
M10 x 15 mm (short)	652 0 110	-
M8 x 15 mm (long)	652 0 200	652 4 508
M10 x 15 mm (long)	652 0 210	652 4 510



Ball swivel hanger assemblies

Zinc plated, unless mentioned otherwise.

WM RapidRail® T-connector



Part No. For
658 4 090 WM0, 1, 15, 2 and 30

WM RapidRail® X-connector



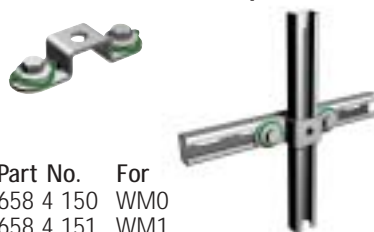
Part No. For
658 4 091 WM0, 1, 15, 2 and 30

WM RapidRail® Rail-connector



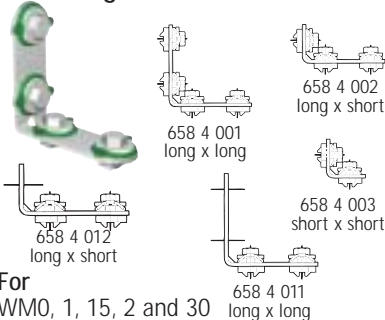
Part No. For
654 3 001 WM0, 1, 15, 2 and 30

WM RapidRail® Rail-clamps



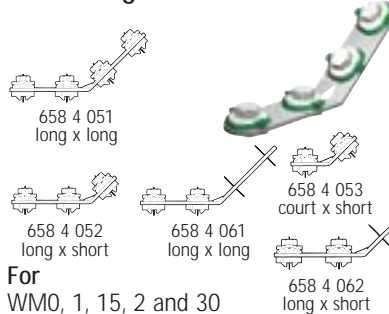
Part No. For
658 4 150 WM0
658 4 151 WM1
658 4 152 WM15
658 4 153 WM2

WM RapidRail® 90° angular rail connectors



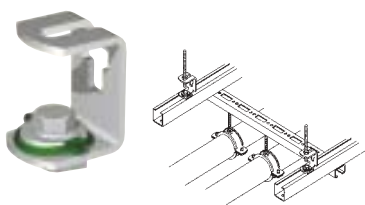
For
WM0, 1, 15, 2 and 30

WM RapidRail® 135° angular rail connectors



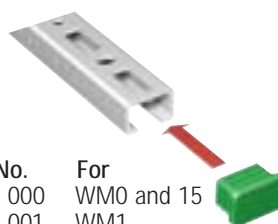
For
WM0, 1, 15, 2 and 30

WM RapidRail® Rail-suspension bracket



Part No. For
679 3 008 WM0, 1, 15, 2 and 30

WM End caps



Part No. For
656 6 000 WM0 and 15
656 6 001 WM1
656 6 002 WM2
656 6 030 WM30
656 6 041 WM14

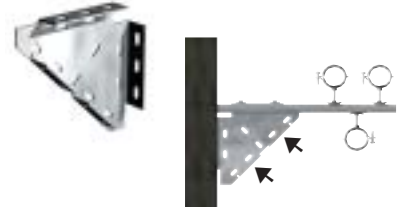
Zinc-plated, unless mentioned otherwise.

***WM* Rail junction angle bracket**



Part No. For
 660 3 010 WM0, 1, 15, 2 and 30
 660 3 020 WM14

***WM* Angle bracket**



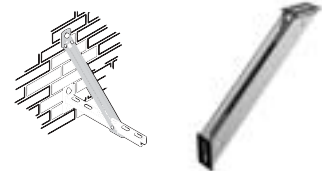
Part No. For
 659 3 010 WM0, 1, 15, 2 and 30
 659 3 020 WM14

***WM* Rail junction assembly for steel beams**



Part No. For
 661 3 820 WM0, 1, 15, 2 and 30

***WM* Rail props**

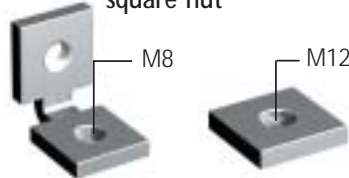


Part No. L (mm) For
 662 8 220 200 WM0, 1, 15 and 2
 662 8 230 300 WM0, 1, 15 and 2
 662 8 530 300 WM14

STAINLESS STEEL 316

662 7 220 250 WM1, 15 and 2

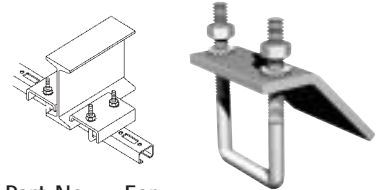
***WM* Angle formed slide nut and square nut**



Part No. For
 651 3 709 for WM1, 15, 2 en 30

Part No. For
 651 9 913 **STAINL. STEEL 316**
 651 1 012 for WM1, 15 and 2

***WM* Rail beam clamps**

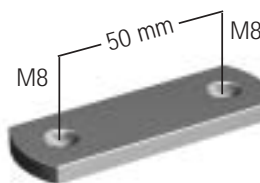


Part No. For
 658 5 011 WM0, 1, 15, 2 and 30
 658 5 014 WM14

STAINLESS STEEL 316

658 7 011 WM1, 15 and 2

***WM* Double slide nut**

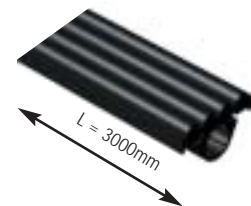


Part No. For
 651 3 208 WM1, 15, 2 and 30

STAINLESS STEEL 316

651 1 208 WM1, 15 and 2

***WM* Rubber strips**



Part No. For
 656 8 001 WM0, 1, 15, 2 and 30

<p>Nederland: Walraven B.V. Postbus 15 NL-3640 AA MIJDRECHT Tel.: +31 (0)297 23 30 00 Fax: +31 (0)297 23 30 33 info@walraven.com</p>	<p>België/Belgique: Walraven BVBA Ambachtenlaan 30 B-3300 TIENEN Tel.: +32 (0)16 82 20 40 Fax: +32 (0)16 82 01 86 info@walraven.be</p>
<p>Deutschland: BIS Walraven GmbH Postfach 125128 D-95425 BAYREUTH Tel.: +49 (0)921 7560 0 Fax: +49 (0)921 7560 222 info@bis-walraven.de</p>	<p>United Kingdom: IHL Walraven Ltd. Thorpe Close, BANBURY Oxon, UK-OX16 8UU Tel.: +44 (0)1295 75 34 00 Fax: +44 (0)1295 75 34 28 sales@walraven.co.uk</p>
<p>France: Walraven SARL 2, Allée du Moulin Berger F-69130 ECULLY Tél.: +33 (0)4 78 66 15 10 Fax: +33 (0)4 78 64 55 89 info@walraven.fr</p>	<p>Ceska Republika: Walraven I.S. s.r.o. Bezděčín 17 CZ-29301 MLADÁ BOLESLAV Tel.: +420 326 72 40 09 Fax: +420 326 72 40 09 info@walraven-is.cz</p>
<p>Polska: Walraven Sp Z.O.O. UL. Zakopianska 85 PL-30 418 KRAKÓW Tel.: +48 (0)12 268 42 61 Fax: +48 (0)12 268 42 60 info@walraven.pl</p>	<p>Other countries: Walraven International B.V. PO Box 15 NL-3640 AA MIJDRECHT Tel.: +31 (0)297 23 30 00 Fax: +31 (0)297 28 64 09 export@walraven.com</p>

Zinc-plated, unless mentioned otherwise.